

# STURGEON'S OF PEMBURY

Specialists in all types  
of Road and Drive  
Construction

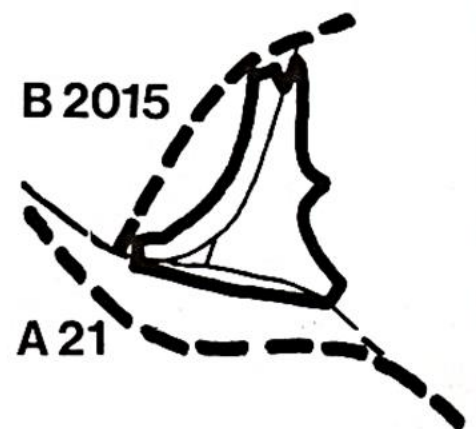
Coal Merchants  
Haulage Contractors

Henwood Green, Pembury. Tel: Pembury 2221/2/3

# PEMBURY

Your VILLAGE newsletter / 54  
NO. 1  
SUMMER 1988

## THE BY-PASSES



**FINISHED**

## contents

Viewpoint .....	2
Rates .....	3
Youth Club .....	4
Clerk's Report .....	4
Meet your Councillors .....	5
Pembury 2000 Plus .....	5
Library .....	6
A walk around Pembury .....	9
In brief .....	10
Neighbourhood Watch .....	11
Holiday tips .....	11
Historic day .....	12/13
By Pass celebrations .....	13
Look back .....	15
Obituaries .....	19
Your local Councillors .....	21
Village Organizations .....	22
For your diary .....	23

## VIEWPOINT

There's a saying that people pay their taxes in sorrow and their rates in anger. I don't know who said that, but it has the ring of truth. Perhaps it's because we feel we're all in the same boat when it comes to Income Tax or VAT, but with the rating system there are obvious and glaring inequalities. After all, why should an elderly widow living on her own have to pay the same rates as a family in an identical house with father and mother in good jobs and three children all earning? And whether the widow qualifies for rate rebate or not, the injustice is there. Raising taxes on property rather than on people is an archaic system which has always produced inequalities and anomalies, and for years politicians have been considering how to improve and modernise it.

Mrs Thatcher's Government feels that the fairest method is one where everyone who uses local services also contributes towards their cost. This is what the poll tax, or community charge, due to be introduced in England on April 1 1990, aims to do. The Department of the Environment has issued a leaflet which explains how the new system will work, and an outline of its main features is given on the opposite page.

But, if it's right that everyone using local services should pay for them then, say many people, it surely can't be fair that the poor pay the same flat rate as the wealthy. This is the debate now exercising the minds of members of parliament and the public, and there may well be modifications to the proposed community charge legislation before it is finally approved.

Paying the community charge will certainly make it easier for everyone to see exactly how much they are contributing to each tier of local government. For residents in Pembury the community charge will consist of the county charge per adult, the Tunbridge Wells BC charge per adult and the parish charge per adult, minus the payment of central government grants and redistributed business rates, also expressed as amounts per adult. Community charge payers will receive a bill showing the total spending of each authority, the other sources of income and the net amount to be raised by the community charge.

These arrangements reflect the variations in spending between one parish council and another and overcome a common criticism of the present rating system. Now, because parish councils do not receive any government grant directly - unlike the district and county councils - the parish council's precept is made to seem disproportionately large. In future, under the new system, the spending of all authorities in the area will be seen on a comparable basis.

Editor

## This year's rates bill

The 1988/89 rates bills have now arrived, and with them the accompanying leaflets from Kent County Council and Tunbridge Wells Borough Council, explaining the reasons for the increases and where the money goes. It's worth reiterating some of this information.

The largest increase is in the KCC rate, which has gone up 12.5 per cent to 192p in the £. The KCC says this is largely due to a reduction in central government grants and to nationally negotiated pay increases for local authority workers. They promise improved services, mainly by better use of existing resources, but have also earmarked 3.49p of the rate for these improvements.

They include more teachers for primary schools, extra funds for GCSE implementation, more resources to combat child abuse, a home-finding service for children in need, more day care places for the elderly, development of mental health services, higher level of road and foot-path maintenance, improved street lighting, and more firemen and policemen.

Tunbridge Wells BC rate has gone up by 3p to 18p, which is an average increase of 11p per household per week and is equivalent to £390,000 additional rate income. Among its areas of growth are the Cleaner Borough Campaign and improvements to tourism and leisure facilities.

The Pembury Parish Council precept has gone up by 1p to 9.40p, an increase that represents an extra £2.14 per household. The average cost per household this year for parish expenses is £24.44.

## COMMUNITY CHARGE How it will work

The main features of the community charge, which will come into force in two years' time, are as follows:

★ Domestic rates will be replaced by a community charge levied as an equal amount per adult in each area. District or borough councils will be responsible for collecting the community charge.

★ Non-domestic or business rates will remain, but will be charged at a uniform poundage throughout England. The proceeds from this will be paid to a central pool and redistributed as an equal amount per adult. District councils will be responsible for collecting non-domestic rates as they are now.

★ A simpler system of government grants will be fixed before the start of the year and will not vary afterwards.

★ All the money from the community charge, government grants and redistributed income from non-domestic rates will be paid into a new collection fund, run by the district or borough council. This fund will meet all the spending requirements of the county council, the district council and the parishes.

## Election results

Mrs Hazel Hawes Richards (Liberal Democrat) was re-elected for the Pembury Ward on Tunbridge Wells Borough Council. She polled 1232. Mr Richard Brinklow (Con) received 730 votes and Mr Kevin Barden (Lab) 232.



## Pembury Woodside Youth Club

You will all have read in the press recently about the set-back suffered by the youth club when youths broke into the building and smashed almost everything inside the club. Since then the club has received an enormous amount of help from residents, both by way of volunteer labour and by donations of materials for which it is indebted.

The club is now shipshape and very much in working order.

Lorna Weller, from Tunbridge Wells, has been appointed as part-time Warden for the club and she has many exciting plans for activities for young people in Pembury. These include visits and competitions, discos and video shows. She would also like to run the Duke of Edinburgh Award Scheme at the club and anyone who would like to participate in this worthwhile spare-time interest should contact Lorna on Tunbridge Wells 33157.

It is also hoped that the popular Junior Youth Club for 10-13 year old members will re-commence during the year and this will be publicised in the village.

Lorna intends to set up a Senior night for 13-15 year old members, with a programme of events and activities. This will be a strictly no-smoking night.

Lorna would like to hear from anyone who would like to spend some time with her in the youth club and from anyone who has a particular skill which they would like to offer. Please contact her for any further information.

## Tunbridge Wells Marching Band

This group of young people is using the Youth Club building for rehearsals. They attend many functions and enjoy a good social life. Any young person interested in joining them will be most welcome. No musical knowledge is required as the organisers will teach you. If you are interested please ring Wendy Batchelor on Tunbridge Wells 43978.

4

## Your Clerk Reports

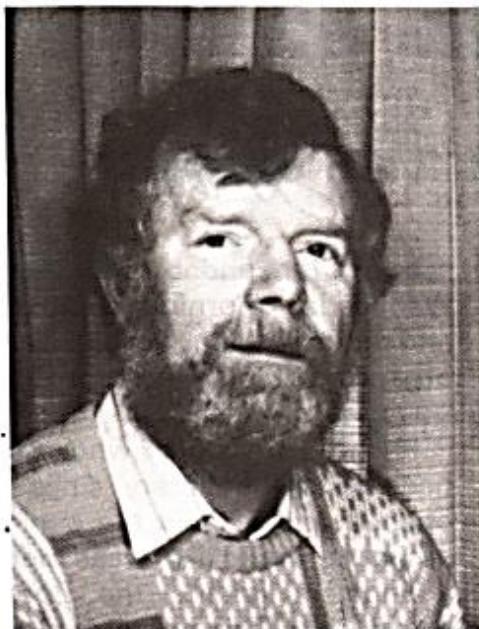
One of the most frequent items on which the Parish Council receives correspondence is regarding dog fouling and mostly it is concerning our two Recreation Grounds. Most of the correspondents draw the attention of the Parish Council to the very unsocial action of dog owners who just use these open spaces as dog toilets with no apparent regard to the other users, especially the children who, quite rightly, use this as a safe area to play, and others who use this area as a place of recreation.

The Parish Council is more than aware of the problems that this dog fouling creates and although they have instigated byelaws and erected notices it really comes down to enforcement. The Parish Council has been in discussion with the Tunbridge Wells Borough Council regarding the introduction of what has been called "the Poop-Scoop-Byelaws" and has found that the cost of enforcement is very high indeed. Because of this cost, even the Borough Council has had to defer a decision on these new byelaws until the next financial year 1989/1990. As the Parish Council cannot go ahead by itself, a delay in any decision on this important subject is inevitable. Despite this, the policy of the Parish Council remains - if any member of the public is able to supply the name and address of the owner of any dog seen fouling the Recreation Grounds and is prepared to give evidence to this effect, then the Parish Council will prosecute that owner.

It's sad, isn't it, that all this action could be avoided if ALL owners when exercising their dogs did NOT visit the Recreation Grounds or other public places, but left those areas to be enjoyed as they were intended to be enjoyed without the unnecessary health problems that their pets literally leave behind them.

H. S. J. Plant  
Clerk to the Council

## MEET YOUR COUNCILLORS



Mr. David Coleman, Vice Chairman of Pembury Parish Council

David Coleman was born in the North of England and grew up in Inner London. Like so many Pembury residents he and his wife moved to the village in 1970 just after they were married - and both their children were born and went to school in the village (they now go to Mascal's).

David has a passionate view of the need to keep Pembury a village and to fight strongly against any development proposals which threaten the green and pleasant part of Kent in which we live.

With that in mind he was elected to the Parish Council in 1983 and became Vice Chairman last October. He is also Chairman of the Kent Association of Parish Councils Area Committee concentrating on the major planning issues facing rural Tunbridge Wells. Because of his 'specialisation' in planning matters the KAPC appointed David last year to Chair the Kent-wide working party responding to the County Council's proposed changes to the Kent Structure Plan (the basic book of 'rules' for future planning in the county).

David Coleman is a member of Pembury Free Church.

## PEMBURY 2000 PLUS

How do you want to see Pembury develop between now and the turn of the century? As part of its village study "Pembury 2000 Plus" will shortly be carrying out a selected house-to-house survey, when a questionnaire will be circulated.

Please fill in the form when it arrives. Your views are important in planning Pembury's future.

Looking at Pembury



5

## Library to mark its tenth anniversary

Pembury Library celebrates its tenth birthday this year, and to mark the occasion library staff are planning a birthday party on Saturday 24 September. The event will be held in the car park in the afternoon, when there will be a special attraction for children (possibly a fire engine) and various other activities, including a photographic competition.

Plans are still at an early stage and further details and information will be displayed on the library notice board during the summer.

Over the years membership of the library has remained steady at about 2000, with the junior section particularly well supported. There is a story-time



session for under-fives every Wednesday morning at 10.30, and regular holiday activities are organised for older children.

Rachel Crosland, who has been with the library since it opened and is now the senior assistant, would like to see more youngsters joining the Book-worm Club. This is for children between 7 and 12 years old, and involves reading, and answering questions on, a number of books, with a book token prize at the end of the course.



**your LIBRARY**

6



# S & B AUTOS

## ACCIDENT REPAIR SPECIALISTS

CAMDEN SERVICE



STATION PEMBURY



RE-SPRAYING

CHASSIS JIG ALIGNMENT

LOW BAKE OVEN FOR FACTORY FINISH

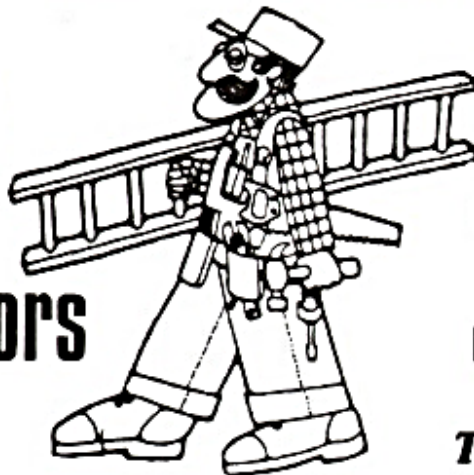
**24-Hour Recovery Service**

*Come to the people who care  
Friendly advice — Courteous Service  
Fully Experienced Engineers*



# RICHARD CAMPBELL

**Builders  
&  
Decorators**



**Alterations  
Extensions  
Conversions  
Repairs &  
Maintenance**

**Tel-T.W. 23177**

**51, Napier Rd, Tunbridge Wells**

# P.J. & J.M. Ditchett

**CHEMIST**

Medicines  
Baby Products  
Kodak Films  
Developing & Printing

Cosmetics  
Fancy Goods  
Gift Sets  
Toiletries

**5, HIGH STREET, Pembury, ☎ 2896**



## A WALK AROUND PEMBURY

Pembury Footpath Walkers have devised a walk of about three miles around the village which provides plenty of interest and varied scenery. Why not try it one sunny weekend?

Start on the path that runs behind Ridgeway (FP231) which can be approached either from the recreation ground or the path through the graveyard next to the school (or from Woodsgate). Turn right towards the waterworks. Where the path meets the B2015 by-pass it has been diverted along the side of the road to meet Church Road by the new footbridge. Cross the bridge and continue down Old Church Road to the junction with Redwings Lane.

Turn into Redwings Lane where there is a footpath (217) on the right hand side between the cottages and the electricity substation. Follow this path up to the new road, turn left alongside the road and then up the bank to the farm bridge at Downingbury. On the farm side of the bridge turn left along the fence until you meet the farm track and then turn right towards the farm buildings. (The direct route through the farmyard is not a public right of way.)

By the farm shop turn left to the Maidstone Road. Cross the road and follow the path to Pippins. From the

farmyard turn up the hill with the farmhouse on your right (FP215). At the top of the field go into the orchard and turn right onto the track (FP248) towards Stonecourt Farm.

At the end of the track turn left on to FP221 (or if you have had enough turn right and then left into Stonecourt Lane, coming out by the bus stop). FP221 goes down the hill to Snipe Wood.

Enter the wood with a sharp left-hand turn into a double bend that comes out by a concrete bridge. Cross the bridge with care as the stream here has very deep banks that have been completely obscured by fallen trees. Follow the path up the hill and at the top turn sharp right on to a track. About 50 yards further on there is a barbed wire fence to your left.

Where the fence turns left (to Woodlands and Romford Road) keep straight on down the hill. Over the bridge at the bottom keep straight on and follow the path up to Beagleswood Road. Turn right and immediately left. At the end of the cul-de-sac keep left towards the garage area but turn right between the lamp post and the concrete post. This path comes out in Henwood Green Road by the shop on the corner of Romford Road.

9

## IN BRIEF

Pembury has a thriving Darby and Joan Club which meets fortnightly, when about 60 members are given a tea of cakes and scones, provided with the help of local residents. If you feel you could also help by baking two or three dozen cakes or scones once, or maybe twice, a year, would you please contact Mrs O. J. Clear, 39 Highfield Close, or ring Pembury 2563.

\*\*\*

The former Pembury Orchestra, now operating from Tunbridge Wells and known as the Grosvenor Orchestra, still includes many Pembury musicians. However, the orchestra would welcome new players and anyone interested should ring Howard Jones on Tunbridge Wells 29350.

\*\*\*

Pembury Parish Church will be open to visitors each Sunday afternoon until 11 September between 2 pm and 5 pm. The Friends of Pembury Parish Church look forward to meeting visitors to this ancient and beautiful old church.

\*\*\*

Pembury Badminton Club meets at Sandown Court School on Sundays at 2.30 pm when junior players are welcome and coaching is provided.

\*\*\*

The replanting of 15 trees lost in last October's hurricane has had to be postponed because the tree contractors have been so busy and trees also need to be planted in the autumn. This means the parish council loses its current tree grant, but it has asked the KCC for a further allocation of funds later this year.

\*\*\*

Tunbridge Wells Annual Pantiles Festival will be held from Monday 4 July to Saturday 16 July. Other summer entertainment on the Pantiles Band-

stand includes a series of children's entertainers on Saturdays at 11 am and 3 pm between 23 July and 27 August. On Sundays at 3 pm there will be town and military band concerts, starting on 26 June with the Eastbourne Silver Band. Other performances are: East Peckham Silver Band on 3 July; East Grinstead Concert Band on 10 July; Edenbridge Town Band on 17 July and Crawley Silver Band on 24 July. At the height of the holiday season two Sunday afternoon concerts at 2.30 pm and 5.30 pm will be given by the following bands: Central Band of The Royal British Legion on 31 July; Band of the Royal Military School of Music on 7 August; Kent Police Band on 14 August; the Staff Band of The Women's Royal Army Corps on 21 August and The Band of the Royal Hampshire Regiment on 28 August.

\*\*\*

A wooden seat, donated by the parish in memory of Ken Grainger, has been placed outside the Village Hall. Mr. Grainger, who died in 1985, was one of Pembury's most popular residents and was well-known as a local cricketer. After retiring in 1978, he became the caretaker of the Village Hall.

\*\*\*

Pembury Players' contribution to the by-pass celebrations is to take the form of a series of theatre workshops designed to interest and attract new young members. For three evenings - 12, 13 and 14 July - the Players will demonstrate how sets are built, costumes made, lighting arranged, the art of stage make-up, as well as carrying on actual rehearsals for a one-act play "This desirable cottage". On the final evening, Friday 15 July, the play will be performed. The producer will be Jeff Heald. Members of the public are welcome to attend the workshops or the performance, and there will be no admission charge on any evening.

## Neighbourhood Watch proving successful

Pembury now has seven neighbourhood watch areas and the Police are very happy with the way the scheme is going. According to PC Mark Flight, Pembury's local "bobby", there has been a marked reduction in burglaries in the village since the introduction of neighbourhood watch in 1986.

The Police would welcome further schemes and if local residents would like more information then please contact PC Flight at the Police House, 8 Amberleaze Drive.



## Holiday Tips

Summer holidays are a time when empty houses could provide opportunities for thieves, but there are some simple precautions everyone can take.

- ★ Ask a neighbour to keep an eye on your home, and to push in any mail or free-sheet papers left protruding from your letter box.
- ★ Don't forget to cancel your newspapers and milk - but tell your milkman well in advance, don't leave a note for him in a milk bottle.
- ★ If you are going away for some time ask a nearby relative, a friend or your neighbour to collect your post and perhaps trim your lawn (you can do the same for them!).
- ★ Make sure all your windows are shut, and security-locked if possible. Similarly, check all doors, including garage door, are securely locked.
- ★ Do not leave valuable property lying around or in view of a window. Draw curtains to downstairs rooms.
- ★ Make sure there are no ladders accessible for burglars to use: lock ladders away in your garden shed or garage.
- ★ If you park your car at an airport car park, or somewhere similar, make sure you do not leave your house keys on the same ring as the car keys.





# HISTORIC DAY!

Friday 6 May 1988 was an historic day for Pembury. The opening of the A21 by-pass was the happy ending to decades of campaigning for relief from increasingly heavy traffic thundering through the village. With the B2015 by-pass, which was opened last year, both north-south and east-west through traffic is now diverted away from the village centre, restoring longed-for peace to the High Street.

The opening was performed by Mr. Peter Bottomley, Minister for Roads and Traffic, who was assisted in the ribbon cutting ceremony by three Pembury Primary School pupils - Charlotte McCall (9) and Kevin Swain (9), who held the ribbon, and Oliver Comyn (9), who helped the Minister with the cutting. Watching closely were school classmates and members of the parish council, as well as a crowd of local people.

Proceedings began with a speech of welcome by Sir John Grugeon, Vice Chairman of Kent County Council, and the handing over of the by-pass was by Mr. D. J. Gleeson, chairman of the Gleeson Group, the contractors for both by-passes.

With the new road officially open there was a tour of inspection, followed by a reception at the Spa Hotel in Tunbridge Wells. Here, Pembury Primary School had staged an exhibition of a selection of work that the children had done about the building of the by-pass.

The A21 by-pass cost £7.5 million to build. It is a dual two-lane all-purpose road approximately 4½ km long, beginning at the North Farm roundabout north of Pembury, ending with a new roundabout at Kippings Cross where the B2160 meets the A21. Kent County Council designed

the road and also supervised the work on site as agents for the Department of Transport.

There are four bridges over the new by-pass. One carries the A264 Tunbridge Wells road, from which point there are slip roads giving access to and from the by-pass. There are also bridges at Cornford Lane, Chalket Lane and a footbridge at Roughlands Shaw.

The two roundabouts on the A264 are a new type with chevron paving, which is reflective at night.

Pembury is probably unique in having the completion of two by-pass schemes within a year. The full story about the by-passes will be told in an illustrated brochure which the parish council will be publishing shortly as a special memento for local residents.

## CELEBRATIONS

The calendar of events so far planned to mark the completion of the Pembury by-pass is as follows:-

Monday 27 June - Friday 1 July: Exhibition at Pembury Primary School.

Friday 1 July: Pensioners' tea and bus tour of the new roads.

Saturday 2 July: Woodside Youth Club Disco.

Wednesday 6 July: Children's Picnic.

Saturday 9 July: Horticultural Society Show.

Sunday 10 July: Open-air Church Service.

Tuesday 12 July - Friday 15 July: Pembury Players' Show.

The celebrations conclude on Saturday 16 July with the combined Annual Pembury Fete and By-Pass Festivities. The carnival procession leaves the Green at 1.30 p.m., and the Fete opens at 2 p.m. on the Recreation Ground. From 5 p.m. - 8 p.m. there will be a barbecue and disco, with entertainment for all the family including a fancy dress competition and the search for Miss Pembury 1988.



Mr. Peter Bottomley, Minister for Roads and Traffic, was ably assisted by these Pembury Primary School pupils when he opened the A21 by-pass. The youngsters lending a helping hand are Kevin Swain, Oliver Comyn and Charlotte McCall. (Kent and Sussex Courier photograph)



Pembury Primary School children give a wave from the newly-opened A21 by-pass. Spectators gathered on the Cornford Lane bridge to watch the opening ceremony. (Kent and Sussex Courier photograph)

## ALLEN, STONER, STEELE & CO. Certified Accountants

- ★ Limited Company Audits
- ★ Taxation - Corporate & Personal
- ★ Accounts Preparation
- ★ Salaries & Wages Prepared
- ★ V.A.T. Returns & Advice
- ★ Book-keeping Services
- ★ Pension Plans Arranged
- ★ Financial Advice

★ We offer a free initial interview to discuss your affairs ★

Beechcroft,  
125 Ridgeway,  
Pembury. Tel: 4810

Offices at:  
Tonbridge  
Sheerness



## KEEP PEMBURY A VILLAGE

Join the Pembury Society  
The local amenity watchdog · Telephone 2548

# LOOK BACK

## Pembury Cricket Club

A member of Pembury Cricket Club for over 50 years, and now its secretary, Peter Chandler looks back at the club's history.

"The club, which is probably the oldest in the village, holds records of its activities since 1872, although the game was almost certainly played for many years before this. Matches used to be played on Tuesdays and Fridays and were two innings affairs with fairly low scoring. In the 1800s membership was fairly exclusive and restricted to players who could provide their own horse and trap, and dress in blazer, trousers and cap purchased from a leading Tunbridge Wells tailor.

"At the turn of the century villagers started to play and the name of Penn, Hobbs, Gower and my own grandfather appear in the scorebooks. The three Seymour brothers also figure prominently in the records - Jim going on to play for Kent and Owen for Sussex. Their coming brought success and in 1908 the club appointed a professional to bowl to members and maintain the ground - his remuneration £15 per season!

"The club continued in the same manner with limited finance and a small membership, most years' accounts showing a deficit which was usually offset by a smoking concert held in the Camden Hotel.

"The 1930s brought together men known by all and sundry in the village - Arthur Penn, Arthur Cole, Ken Grainger, Sam Standen, George Drury, Frank Lucas, Jack Gorham, Ron Penn, Ron Young - and they held together and saw the club through the difficult thirties and to a restart after the war. I became the club scorer in 1936 and became inspired by the sincerity and comradeship of the small membership.

"The ground was taken over during the war by the army authorities and when they departed the coils of barbed wire remained. Yet somehow we managed to clear up and restore the wicket to a playable condition. No motor mower: for the square a small cutter and ropes for the willing members to pull.

"Our membership remained small and finance hard to come by until the late 1950s, when the club took off inspired by youngsters who are today the backbone of the club. Inspired as was by the 1930s members, it was the enthusiasm of the 1950s that set the club on the road to success and the position of respect it holds today in cricketing circles, and by those who appreciate what has been achieved by the voluntary efforts of the members."



The Pembury Cricket Club shield depicts the Camden arms. This is as a tribute to the late Lord Camden, who originally owned the cricket ground in Chalket Lane. For many years the club paid only a peppercorn rent, but some five years ago Lord Camden sold the ground to the club.



# PENN OF PEMBURY



## BUILDERS & CONTRACTORS

Domestic & Commercial  
Extensions Conversions Alterations  
Repairs & Maintenance

13, High Street, Pembury - Tel 2615

## HAVE YOU GOT CAR PROBLEMS? Consult MARTIN The Mobile Mechanic

1. Qualified mechanic with over 10 years experience
2. V.A.T. registered
3. Free collection and delivery service
4. All makes serviced and repaired 7 days a week
5. Full workshop facilities
6. Work undertaken includes servicing, repairs, bodywork, MOT, recovery, tyres and exhaust
7. Many satisfied customers already in the Pembury area



**M.J.P. Autos  
Hawkhurst  
3416  
or answerphone  
Hawkhurst  
3103**

## DERWENT LODGE SCHOOL 1 LANSDOWNE ROAD TUNBRIDGE WELLS

Day Preparatory School for girls to 11+ and boys to 7+

New Nursery Class for children aged 3-4 years opens this September

Parents with daughters aged 7+ to 10+ may be interested in our excellent record of success in preparing girls for the 11+ and Common Entrance Examinations.

Phone for prospectus and further details.

Tunbridge Wells 25839



### For all aspects of Estate Agency consult your Local Agent:

**Pembury**  
8A High Street, TN2 4NY  
Tel: (089282) 2310

**Tonbridge**  
133 High Street, TN9 1DH  
Tel: (0732) 361466

**Tunbridge Wells**  
5 Vale Road, TN1 1BF  
Tel: (0892) 35777

**Paddock Wood**  
93 Commercial Road, TN12 6OS  
Tel: (089283) 3388

**Sevenoaks**  
138 High Street, TN13 1XE  
Tel: (0732) 456203

**Hildenborough**  
156 Tonbridge Road, TN11 9HW  
Tel: (0732) 833381

ESTATE AGENTS



PEMBURY 2574

Margaret King, Associate Member  
of the Imperial Society of Teachers of Dancing for  
let, Modern Theatre and Tap.

ALL GRADES & ISTD EXAMINATIONS  
Special Pre-school Classes

**BODYFOCUS** for Adults  
A carefully devised programme of  
exercise and jazz dance  
**WEDNESDAY EVENINGS  
AND  
TUESDAY MORNINGS**  
(creche for toddlers)

## T & C WORDPROCESSING SERVICES

Personal and Efficient Service with an Eye for Detail Work  
stored on disks for possible future up-date if required.

Camera Copy finish on Daisywheel or Laser printer.

Large selection of typefaces for

**CV'S  
THESES  
MANUSCRIPTS  
BILLS OF QUANTITY**

Camera Copy Quality Work at Competitive Prices

Telephone: 0892-22883



Home Improvements - Extensions - Free Estimates

# ALAN CLARKE

BUILDERS & DECORATORS

Tel. Pembury 3932

### The Rev. Colin Pilgrim

The village of Pembury was saddened by the unexpected death of the Rev. Colin Pilgrim on 2 February. Mr. Pilgrim was 61 and had been Vicar of St. Peter's since 1982.

Born in Sidcup, he was educated at Dover College. From school he went straight into the Royal Artillery and his military service included six months in the Holy Land.

After the war he read history at Pembroke College, Cambridge, then going on to study theology at Ridley Hall, Cambridge. He was ordained in Guildford Cathedral in 1952 and in that year he also married Anne Tanqueray.

He was curate at Esher until 1957 when he became Rector of Puttenham. He was appointed Industrial Chaplain and Curate of Chislehurst in 1965, and from 1958-67 he was also chaplain to the Territorial Army and of the TAVR until 1974.

In 1974 he was made Rector of St. George's, Gravesend and from 1975 was also chaplain to St. James's Hospital, Gravesend. He continued his interest in hospital chaplaincy work after coming to Pembury and was Pembury Hospital chaplain until 1986.

Mr. Pilgrim had a great love of cricket and was also a keen gardener and stamp collector. For the last two years he had helped raise money by cycling for Kent churches. He leaves a widow, a son and two daughters.

### The Rev. D. M. Wiswell

The Rev. Douglas Morgan Wiswell, who was Vicar of Pembury from 1946-64, died in Tunbridge Wells on 8 January, aged 94 years. Mary Standen, who knew him well, pays this personal tribute.

"The Rev. Douglas Morgan Wiswell came to Pembury in 1946 and we children immediately began to call him 'Wizzie'. In those days there were not many cars about and we all got to know FUG 60, the Vicar's well-worn Vauxhall. 'Phew! That was Wizzie. Wonder where he's off to now,' we children would say to each other. He was very fond of children, and it was very sad that he lost his own sons. Right up to the end of his life he kept in touch with many of those who were youngsters when he first came to Kent from Morley in Yorkshire.

"Although Mr. Wiswell's 18 years as Pembury's Vicar did not constitute a particularly smooth passage, he made many friends among his parishioners and he continued to be in touch with them throughout his 24 years of retirement. At times, over the past few years, it was my privilege to act as 'chauffeur' to Mr. and Mrs. Wiswell. Sometimes it was on Christmas Eve, when I would drive him around the village to visit old friends. Once or twice it was much further afield - a luncheon engagement in Hampshire was one lovely trip that I enjoyed. This was when he was in his nineties, and he was still whizzing around and showing a lively interest in everything and everyone.

"Although he enjoyed the lighter side of life, he was first and foremost a priest. Visits often ended with a prayer, and at tea-parties he would say, 'Now, I've got a little bit here I would like to read to you,' and would proceed to read one or two carefully selected passages. In 1983 there was a special service at the Parish Church to celebrate Mr. Wiswell's 60 years as a priest, when some of his relatives from Canada were able to be with him."



# PIPPINS FRUIT FARM

PICK YOUR OWN and  
READY-PICKED FRUIT

QUALITY AND FRESHNESS  
ON YOUR DOORSTEP

STRAWBERRIES  
RASPBERRIES  
LOGANBERRIES  
GOOSEBERRIES



BLACKCURRANTS  
APPLES  
PLUMS  
REDCURRANTS

See local press for  
latest details

mid June -  
mid October.

Try  
our  
PIPPINS  
FARMHOUSE  
CIDER

Maidstone Road, Pembury,

Telephone: Pembury 4569

## Burtons Pembury's Solicitors

Penn House  
13a High Street  
Pembury

Car park in Penns Builders yard  
just behind our offices

Tel Pembury 4577



## Pembury Secretaries

shorthand & audio typing  
duplicating

photocopying  
copy typing

**Jackie Prance** ☎ 4489  
**Eileen Cordell** ☎ 3156  
**Pauline Hawker** ☎ 4327  
**Maureen Redmond** ☎ 2224

## PEMBURY

PEMBURY is published four times a year by Pembury Parish Council. The Editor would welcome any contributions for inclusion in the Newsletter. Design and layout by DHR Photographic Ltd; printed by Orchard Printing Services, East Peckham. The views expressed in the Newsletter do not necessarily represent official Parish Council opinion or policy.

EDITOR  
Elizabeth Repath

CLERK TO THE COUNCIL  
Henry S. J. Plant  
16 The Coppice, Pembury 3459

## YOUR REPRESENTATIVES

- County Council** Derek Hawes Richards, Hop Press Oast, Mascalls Court Road, Paddock Wood. Tel: PW (983) 4692
- Borough Council** Bob Brown, 11 Beagles Wood Road. Tel: P 3067  
Mrs Hazel Hawes Richards, Hop Press Oast, Mascalls Court Road, Paddock Wood. Tel: PW (983) 4692  
Mrs Hildy Swinden, 6 Church Road. Tel: P 3378
- Parish Council** Mr Richard Miles (Chairman) (Chairman Amenities), Fletchers Farm, Hastings Road. Tel: P 2378  
Mr David Coleman (Vice Chairman), 22 The Ridgeway. Tel: P 3402  
Mr Hugh Boorman, 52 Henwood Green Road. Tel: P 3068  
Mr Brian Chantler (Chairman Highways, Planning), 4 Stanam Road. Tel: P 3339  
Mrs Margaret Gannaway, 23 The Coppice. Tel: P 2513  
Mr Derek Goodwin, 27 Greenleas. Tel: P 3822  
Mr John Hawker (Chairman Public Relations), 1 The Rowans, Heskett Park. Tel: P 4327  
Mr David Hayward, 55 Batchelors. Tel: P 4444  
Mr Kit Kelly (Chairman Finance), 22 Hastings Rd  
Mrs Mary Shepherd (Chairman Burial & Allotments), 37-39 High Street. Tel: P 2329  
Mrs Betty Roberts, 16 Woodhill Park. Tel: P 4914  
Mr Arthur Storey, 13 Henwood Green Road. Tel: P 2509  
Mr Bob Wilkes, 6 Belfield Road. Tel: P 3264

## KENT RADIATOR SERVICES

13 High Street - Pembury - Kent

Specialists in

Car and Commercial Radiators and Heaters  
Same Day Service on Repairs and Exchanges  
Choke, Conversion Kits also stocked

PHONE: **Pembury 4684** AFTER HOURS: **2197**

# VILLAGE ORGANIZATIONS

### AGE CONCERN

- Mrs. M. Harris. Tel: T.W. 22591  
ASSOCIATION OF PEMBURY FOOTBALL CLUBS  
J. Smith, 18 Westway. Tel: 3714  
BOWLS CLUB  
Secretary: D. J. Duquemin, 1 The Forstal, Tel: 2628  
1st BROWNIES GUIDER  
Mrs. Harden, 55 Ridgeway. Tel: 2665  
3rd BROWNIES GUIDER  
Mrs. Boorman, 65 Heskett Park. Tel: 2355  
CAMDEN GREEN BADMINTON CLUB  
R. Holt, 50 Ridgeway. Tel: 3830  
CATHOLIC CHURCH  
Father Bickley, The Presbytery, 11 Alliance Way, Paddock Wood. Tel: P.W. 3699  
CONSERVATIVE PARTY  
D. N. Goodwin, 27 Greenleas. Tel: 3822  
CRICKET CLUB  
P. Chandler, 149 Sherwood Road, Tunbridge Wells. Tel: Tunbridge Wells 33886  
CUBS  
J. Wiltshire, 4 Henwoods Mount. Tel: 4574  
DARBY & JOAN CLUB  
Mrs. B. Greatrex, 52 High Street. Tel: 2669  
FRIENDS OF PEMBURY HOSPITAL  
c/o Pembury Hospital. Tel: 3535  
FRIENDS OF PEMBURY PARISH CHURCH  
Treasurer: D. J. Ould, 42 Lower Green Road. Tel: 2616  
GUIDE GUIDERS  
1st Pembury Company: Mrs. A. Baker, 67 High St. Tel: 4441  
3rd Pembury Company: Mrs. J. Usherwood, \* 1 Ridgeway. Tel: 2235  
HOCKEY CLUB  
J. Hawker, 1 The Rowans, Heskett Park. Tel: 4327  
HORTICULTURAL SOCIETY  
M. Mephram, 16 The Paddock. Tel: 2703  
JUNIOR FOOTBALL CLUB  
L. Frowde, Hawkwell House, Maidstone Road. Tel: 2826  
KENT COLLEGE  
Headmaster: Rev. J. Barrett. Tel: 2006  
KENTISH VALE ROUND TABLE  
J. Barsley, Briar Cottage, Poplars Farm, Churn Lane, Horsmonden. Tel: Brencley  
KENTISH VALE LADIES' CIRCLE  
Mrs. Wendy Kingcome, 11 Fellows Way, Hildenborough. Tel: H'boro 833403  
KING WILLIAM IV FOOTBALL CLUB  
Kevin Barden, 24 Beagles Wood Road. Tel: 4708  
LABOUR PARTY  
S. Fowler, 71a St. John's Road, Tunbridge Wells. Tel: Tunbridge Wells 20250  
LADIES' NETBALL CLUB  
Mrs. M. Walker, 65 Belfield Road. Tel: 3439  
LARKFIELD HALL  
Principal: J. H. Mason, Cornford Lane. Tel: 2168  
LAWN TENNIS CLUB  
Mrs. S. Smith, 2 Ridgeway. Tel: 2405  
LIBERAL PARTY  
Bob Brown, 11 Beagles Wood Road. Tel: 3067  
MUMS AND TINY TOTS CLUB  
Mrs. J. Pipe, 17 Batchelors. Tel: 4783 and  
Mrs. R. Biela, 6 Beagles Wood Road.  
OUTGROWN CHILDREN'S WEAR  
Mrs. E. Westbook, 6 Carlton Road, Tunbridge Wells. Tel: Tunbridge Wells 35794

### PEMBURY BUSINESS ASSOCIATION

- T. P. Burton, 13a High Street. Tel: 4577  
PEMBURY FOOTBALL CLUB  
L. Frowde, Hawkwell House, Maidstone Road. Tel: 2826  
PEMBURY FOOTPATH WALKERS  
N. & K. Franklin, 11 The Meadow. Tel: 3212  
PEMBURY FREE CHURCH  
Rev. G. Pimental, 56 Lower Green Road. Tel: 4917  
PEMBURY FREE CHURCH PLAYGROUP  
Mrs. Wendy Parrett, Paddock Wood. Tel: 6945  
PEMBURY FRIENDS OF SEVEN SPRINGS  
Mrs. Durant, 39 Lower Green Road. Tel: 2196  
PEMBURY LADIES' SOCIAL GROUP  
Mrs. C. Segens. Tel: 3846  
PEMBURY PARISH CHURCH  
Rev. Colin Pilgrim, The Vicarage, Hastings Road. Tel: 4761  
PEMBURY PLAYERS  
P. Wells, 120 Beagles Wood Road. Tel: 3397  
PEMBURY PLAY GROUP  
Mrs. J. Yorke, 34 Greenleas. Tel: 2641  
PEMBURY PRIMARY SCHOOL  
Headmaster: Mr. R. Nisbet, Lower Green Road. Tel: 2259  
PEMBURY SEQUENCE DANCE CLUB  
Mrs. Hasted, The Glade, Cryals Road, Matfield. Tel: Brencley 3531  
PEMBURY SHORT MAT BOWLING CLUB  
H. S. J. Plant, 16 The Coppice. Tel: 3459  
PEMBURY SOCIETY  
S. Brearley, 17 Greenleas. Tel: 2942  
PEMBURY WOODSIDE YOUTH CLUB  
Mrs. P. Hawker, 1 The Rowans, Heskett Park. Tel: 4327  
Warden: Mrs. L. Weller. Tel: T. Wells 33157  
PRIMARY SCHOOL PARENT-TEACHER ASSOCIATION  
Mrs. R. Burton, Secretary. Tel: 4491  
ROYAL BRITISH LEGION  
J. Young, 13 Bulls Place.  
ROYAL NATIONAL LIFEBOAT INSTITUTION  
W. H. Dee, 1a Woodhill Park. Tel: 3131  
SCOUT GROUP  
J. Wiltshire, 4 Henwoods Mount. Tel: 4574  
SCOUT & GUIDE BUILDING FUND  
Tony Berry, 85 Hastings Road. Tel: 2517  
ST. PETER'S WOMEN'S FELLOWSHIP  
Mrs. H. Collins, 30 Woodhill Park. Tel: 2856  
TABLE TENNIS CLUB  
M. Nash, 8 The Coppice. Tel: 3225  
TINY TOTS PLAY GROUP  
Mrs. J. Cook, 38 Lower Green Road. Tel: 3118  
VENTURE SCOUTS  
Keith Waymont, 50b Yew Tree Road, Southborough. Tel: Tunbridge Wells 40605  
VILLAGE HALL  
Manager (bookings): Mr. J. Goodsell, 61 Belfield Road. Tel: 2342  
WOMEN'S INSTITUTES  
Afternoon: Mrs. B. Greenwood, Pixie Cottage, Romford Road. Tel: 2533  
Evening: Mrs. V. Ballantine, 6 Maidstone Road. Tel: 2156  
W.R.V.S.  
Mrs. H. Swinden, 6 Church Road. Tel: 3378

# FOR YOUR DIARY

- JULY**
- 1 Evening W.I. Talk on flower arranging by Ann Payne, Village Hall 7.45 p.m.
  - 2 Pembury Footpath Walkers - Walk starting from Bo-Peep corner 2.15 p.m.
  - 5 Darby and Joan Club, Village Hall 2 p.m.
  - Ladies Social Group - Annual barbecue at 12 Amberleaze Drive, 8 p.m.
  - 7 Afternoon W.I. "Pressed flower pictures" by Mrs. M. Thrush, Village Hall 2.30 p.m.
  - 9 Horticultural Society Annual Summer Show, Village Hall 2.30 p.m.
  - 11 Horticultural Society Floral Art Group, Village Hall 8 p.m.
  - 18 Parish Council Meeting (Management matters) Village Hall 8 p.m.
  - 19 Darby and Joan Club summer luncheon, Village Hall 1 p.m.
- AUG**
- 2 Darby and Joan Club, Village Hall 2 p.m.
  - 4 Afternoon W.I. Meeting, Village Hall 2.30 p.m.
  - 5 Evening W.I. Garden Party at Fletcher's Farm.
  - 6 Pembury Footpath Walkers - Walk starting from Stonecourt Lane at 2.15 p.m.
  - 8 Horticultural Society Floral Art Group, Village Hall 8 p.m.
  - 16 Darby and Joan Club, Village Hall 2 p.m.
  - 30 Darby and Joan Club - Outing to Bexhill 1 p.m.
- SEPT**
- 1 Afternoon W.I. Demonstration by Potato Marketing Board, Village Hall 2 p.m.
  - 2 Evening W.I. "Detectable Collectables" by Oonagh Hyndman, Village Hall 7.45 p.m.
  - 3 Pembury Footpath Walkers - Walk starting from Camden car park at 2.15 p.m.
  - 5 Parish Council Meeting (Environmental matters), Village Hall 8 p.m.
  - 5 Darby and Joan Club - Outing to British Legion poppy factory at Richmond.
  - 10 Horticultural Society Autumn Show, Village Hall 2.30 p.m.
  - 12 Horticultural Society Floral Art Group demonstration by Mrs. Monsey, admission 50p, Village Hall 8 p.m.
  - 13 Darby and Joan Club, Village Hall 2 p.m.
  - 26 Parish Council Meeting (Management matters), Village Hall 8 p.m.
  - 27 Darby and Joan Club, talk by Mr. Speaight, Village Hall 2 p.m.
  - 29 Horticultural Society - Illustrated talk by Mike Mercer "Country-lovers Diary updated". Admission 20p, Village Hall 8 p.m.

### ST. PETER'S CHURCH SERVICES

- Upper Church**  
8.00 a.m. Holy Communion (First, Third and Fifth Sundays)  
9.45 a.m. Parish Communion  
11.30 a.m. Junior Church (except fourth Sunday)  
6.30 p.m. Evensong with sermon
- Parish Church**  
8.00 a.m. Holy Communion (Second and Fourth Sundays)  
11.15 a.m. Matins and Sermon

Every Friday - Pembury Village Market - V. Hall 9.45-11.15 a.m.  
Every Monday - Pembury Sequence Dance Club - Catholic Hall 7.45-10.15 p.m.

