

STURGEON'S OF PEMBURY

Specialists in all types
of Road and Drive
Construction

Coal Merchants
Haulage Contractors

Henwood Green, Pembury. Tel: Pembury 2221/2/3

PEMBURY

Your VILLAGE newsletter / 170
NO. 170
SUMMER 1992

Re-ordering of
St Peter's
Upper Church
to go ahead

*Full story on
centre pages*

contents

Viewpoint	2
New pavilion for Cricket Club	3
Getting to grips with grapes	4
Adopt a path	4
Welcome	4
Councillors Comment	5
On the beat with PC Vaughan	6
In Brief	9
Youth Centre forges ahead	11
National Music Day	11
New look for Upper Church	12
Look Back	15
Your Clerk Reports	19
For Your Diary	23

VIEWPOINT

The future of Woodgate Corner is still in the melting pot. Most Pembury people, I think, have accepted the need for a supermarket on the site: what sticks in the craw is the possible loss of an amenity area for the concrete wilderness of a Park and Ride scheme. So what is the latest situation? A planning application was registered with the Tunbridge Wells Borough Council on 31 March for permission to build a Tesco supermarket, a community building and a Park and Ride scheme on the land at Woodgate Corner. This is a new application and appears to supersede the previous two applications made last year. The access to the proposed development would be from the A21 roundabout where the derelict house called Philomel stands.

At present it is not clear who would be given control of the community centre, but it could be in the hands of the Borough Council and not the Parish Council, an arrangement which would not find favour in the village.

The Parish Council also objects strongly to the Park and Ride scheme and wishes to see the land used for open amenity space, perhaps incorporating a picnic area, jogging track, netball courts and even a surface for roller skating. There is a lack of open recreational space in Pembury and Woodgate Corner would be ideal for this purpose.

It is vital that the people of Pembury do all they can to ensure that this important site is used for *their* benefit, so their voice must be heard. What would you like to see on this land? Make your wishes known by writing at once to Mr. N. Eveleigh, Head of Planning and Building Control, Tunbridge Wells Borough Council, Monson House, Monson Way, Tunbridge Wells TN1 1LQ. You can, of course, also contact your local borough councillors and parish councillors – their addresses are at the back of this newsletter.

Editor

PEMBURY

EDITOR
Elizabeth Repath

is published four times a year by the Parish Council. The editor would welcome any contributions for inclusion in the Newsletter. Design and layout by DHR Photographic, printed by OPS, East Peckham. The views expressed in the Newsletter do not necessarily represent official Council opinion or policy.

CLERK TO THE COUNCIL

Barbara Russell
6 The Grove, Pembury 3193

New pavilion for Cricket Club

Pembury Cricket Club's original pavilion in Chalket Lane, erected in 1907, had to be replaced once the decision was made not to sell the ground to developers. Demolition started last October and once the shell was completed in January much hard work has been put into completion of the attractive new building before the season started on 25 April.

This has been a considerable venture for the club and has, as usual with Cricket Club activities, been carried out with the minimum of fuss on a self-help basis.

The project was planned by Richard Crouch and the work team of John Boakes and Richard Pipe, who have spent many hours carrying out the specialist and hard work. Other significant contributions were made by

Denis Cole, Cliff Smith, and Colin Barden.

The total cost was £35,000 plus VAT and is a considerable financial undertaking without help from the Borough Council. At present the club is looking for someone who would loan it £10,000 at a reasonable rate of interest to replace the existing bank loan at 16 per cent, which will take five years to repay.

Meanwhile, the club will press on with finalising the infill of the old Scouts area, which next autumn will be planted with shrubs and oak trees.

We are proud of our achievements and look forward to support from the village for our fund raising activities.

Peter Chandler
Club secretary



Pembury Cricket Club's smart new pavilion was in use for their first match of the season against Wadhurst. Here, members of the Wadhurst team await their turn to bat. Wadhurst won, making 148 for 8, Pembury all out for 78.

GETTING TO GRIPS WITH GRAPES

Pembury Vineyard at Pippins Farm had its first major crop in 1991 after taking four to five years to establish from its planting in 1985 and 1986.

Approximately one and a half tonnes was picked off the two acre vineyard with a mixture of red and white grapes. The main varieties include German-bred Huxelrebe and Reichensteiner but there is also a selection of French grapes such as Pinot Noir and Triumph d'Alsace. Wine making takes place on the farm and it is hoped the 1991 vintage will be available for sale later in 1992.

Dave and Beryl Daykin of Herons Way look after the vineyard and make the wine. Now the vineyard is established they would like to hear of anyone else locally who might be interested in giving some occasional help. Pruning and picking are the main tasks, but both are enjoyable jobs as a vineyard has a marvellously peaceful atmosphere. Although there are no wages the reward comes in the form of wine, cider or apple juice which are all made on the farm – one of the few local industries in Pembury.

Anyone interested please contact Dave Daykin on Pembury 3069 or David Knight on Pembury 4624 – or call at Pippins Farm.

Adopt a path

Chris Dale, of the KCC Public Rights of Way Unit, has almost completed his task of putting Pembury's 21 miles of footpaths in good order with new stiles and bridges, cut undergrowth and adequate waymarking.

It is now the turn of the residents of Pembury to ensure that his efforts are not wasted. Many people in the parish have dogs that need exercising, or just enjoy walking for its own sake. It is hoped that enough people will come forward who would be prepared to keep an eye on a particular stretch of path so that all the paths in the parish are covered.

This does not involve any work, just a commitment to contact the authorities if a problem arises, such as dumped rubbish, overgrown undergrowth, broken stiles and so on, and to walk the path three times a year.

Anyone interested can pick up a leaflet from Pembury Library or from Kathryn Franklin at 11 The Meadow.

Welcome

Taking over as Pembury's new village policeman is PC Steve Woollett of Maidstone. PC Woollett is 23 years old and has been in the Police Force for four years, based at Tunbridge Wells. He will now work from the Paddock Wood police office and can be contacted there.

COUNCILLORS

COMMENT



On the Parish Council I am a member of the Planning Committee, the Public Relations Committee and Chairman of the Burials and Allotments Committee. I am also a school governor and President of Pembury Evening WI. I work at Pembury Hospital three days each week and in my spare time I enjoy cooking and gardening.

We moved to Pembury 16 years ago and there are now three generations of our family living here, so I have good reason to be interested in how the village is growing. Developers have acquired sites in the village and seem intent on cram-

ming in as many houses as they can, putting a strain on already heavily loaded services such as water and sewerage.

With the increasing population our leisure facilities have also become inadequate. The work of the Burials and Allotments Committee doesn't give a great deal of scope for changes or development but we have been grateful for donations of memorial trees and seats to make the graveyard at the Upper Church a pleasant place to visit quietly and relax.

We have numerous clubs in the village but not everyone wants to be organised and I feel we need more areas where the whole family can relax together. If we are to have a supermarket at Woodsgate Corner I would like to see the area currently designated for 'Park and Ride' landscaped as a recreational area, not with yet more football pitches but, perhaps, a jogging track and another children's playground.

And, on a purely personal note, I would like to see more ladies standing for election as parish councillors – one member out of 13 is a far from representative balance. You run homes, jobs, families: think what a wealth of experience you have to offer the community.

Betty Roberts



On the beat with
PC Peter Vaughan

A day in the life of a village policeman

The evening shift: 18.00 to 02.00

17.45: Leave home for Paddock Wood office.

17.55: Arrive at Paddock Wood and book on duty. View the computer to update myself on recent incidents in the village. Return several phone calls from people who have left messages. Check other paper work and enquiries.

18.40: Leave office. Attend a call to Paddock Wood where a drunken husband has assaulted his wife. This results in the husband being arrested and taken to Tunbridge Wells Police Station. He is too drunk to be interviewed so he is left in a cell to be dealt with in the morning.

19.45: Patrol in Pembury village. Deal with several enquiries and serve a couple of summonses.

20.15: Home for tea.

20.50: Called out to investigate a report of youths causing a nuisance in the recreation ground.

20.54: Arrive at recreation ground where a group of 12 youths, some local and some from Tunbridge Wells, are sitting by the hockey pavilion. They are not doing anything wrong, only playing a radio at full volume and being in the "rec" after dusk. After taking their names and addresses I advise them to leave, which they did.

21.10: Back on patrol. I'm asked to go to Paddock Wood, where one of the regular area car drivers has gone sick and I am needed to crew the emergency response vehicle.

21.30: Back on patrol.

22.00: Five Oak Green area – check several youths on the village green. We have had on-going complaints from locals about this group and again they are moved on.

22.20: We are travelling along Alders Road when an approaching car nearly runs us off the road. I turn the Police vehicle around and follow. It is a sports car and when we try to stop it, it accelerates away from us. We then follow the vehicle at high speed into Tonbridge, where it crashes. The driver gets out and runs off, chased by my colleague who catches him. I catch the passenger. The driver is breath tested and arrested for a positive test.

23.20: Back on patrol again.

23.40: Call from operations: a lady in Lamberhurst thinks she has prowlers in her garden.

23.50: We arrive, so does a police dog and handler. The dog tracks around the garden and back into the street but nobody is found and there are no people in the area. We all have a cup of tea with the lady to help calm her.

00.30: General patrol in the Lamberhurst area, checking shops and other property. Then back up the A21 to check property in Pembury. As we arrive in Pembury we hear of a large fight in Tonbridge, so we carry on along the A21 to this disturbance.

01.10: At the scene of the fight, which was at a private party where people had gate-crashed. Two people were arrested before our arrival, but we stay outside the party for 20 minutes, just in case.

01.30: On patrol again, checking properties in the Five Oak Green area.

01.55: Back at Paddock Wood office, where I complete paper work and book off duty.

And, we're sorry to say, Peter Vaughan has indeed booked off duty as Pembury's village "bobby", after 13 years. He has been transferred to Tunbridge Wells Police Station, but will continue to live in the village. We wish him well. **Editor**

ASTON STEELE

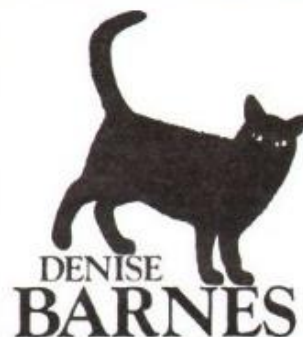
Certified Accountants

- ★ Limited Company Audits
- ★ Taxation – Corporate & Personal
- ★ Accounts Preparation
- ★ Salaries & Wages Prepared
- ★ V.A.T. Returns & Advice
- ★ Book-keeping Services
- ★ Pension Plans Arranged
- ★ Financial Advice

★ We offer a free initial interview to discuss your affairs ★

**Beechcroft,
125 Ridgeway,
Pembury. Tel: 4810**

**Aston House
6 Dudley Road
Tunbridge Wells
Tel: (0892) 549119**



ESTATE AGENTS

VALUERS

SURVEYORS

16 High Street, Pembury, Kent Tel: Pembury (089282) 2880

Your INDEPENDENT Estate Agency
for personal, experienced and friendly service.
FREE VALUATIONS – Competitive rates.

Also at
16 HIGH STREET, PEMBURY
WILMA MORTON MORTGAGE CONSULTANT

FREE WRITTEN QUOTATIONS ON REQUEST

Telephone: Pembury 5477

Please remember, your home is at risk if you do not keep up repayments on a mortgage or other loans secured on it.

S & B AUTOS

ACCIDENT REPAIR SPECIALISTS



CAMDEN SERVICE STATION PEMBURY
24-Hour Recovery Service



RE-SPRAYING CHASSIS JIG ALIGNMENT
LOW BAKE OVEN FOR FACTORY FINISH

*Come to the people who care
Friendly advice — Courteous Service
Fully Experienced Engineers*

P.J. & J.M. Ditchett

CHEMIST

Medicines
Baby Products
Kodak Films
Developing & Printing

Co'smetics
Fancy Goods
Gift Sets
Toiletries

5, HIGH STREET, Pembury, ☎ 2896

IN BRIEF



The Pembury Society is holding a special meeting at 7.45pm on Tuesday 16 June at Camden Court, when Richard Dealler, from the Kent High Weald Project, will give a talk and slide-show about some of the special activities – such as pond clearance, way marking, footpath maintenance and 'pocket parks' – that have been undertaken recently. Young people from the village will be welcome to come and suggest ideas for new projects for the Pembury area.

★ ★ ★

Does anyone wish to organise a village stool ball team? This summer game is very popular in parts of Kent and East Sussex and is similar to rounders. The Parish Council is willing to mark out a pitch on the Recreation Ground – all that is needed now are the players. Contact Barbara Russell on Pembury 3193 if you are interested.

★ ★ ★

The friends of Pembury Parish Church will be holding a coffee morning and sale of cakes, plants, books and hand-crafts on the Village Green (if wet in the Catholic Hall) on Saturday 5 September from 10am to 12 noon.

★ ★ ★

The stalwart members of the Darby and Joan Club aren't getting any younger and are now looking for some younger people as helpers at their meetings and outings. If anyone has the time to spare and would like to lend a hand, the person to contact is Beryl Greatex on Pembury 2669.

A wider range of village organisations are invited to take part in the annual parade and Remembrance Day Service, which up to now has involved only the members of the British Legion, the Burma Star Association and the Boy Scouts. Those interested should ring Dick Miles on Pembury 2378.

★ ★ ★

The Pembury/Ronchin Friendship Association reports that liaison between the two communities is growing steadily. Pembury Primary School is in the process of establishing links with L'Ecole Jean Moulin in Ronchin, two Pembury brothers have arranged a study exchange with a Ronchin family and Pembury Rovers Football Club will be playing two matches in Ronchin over the late May Bank Holiday. Further news will appear in our next issue.

★ ★ ★

Pembury Horticultural Society are holding their Summer Show in the Village Hall on Saturday 11 July, doors open 2.30pm. Although this is the same day as the Village Fete it is within walking distance of the Recreation Ground and in addition to viewing the exhibits there is the opportunity of a cup of tea while resting weary legs. Exhibitors who would like a show schedule should ring either the show secretary on Brenchley 2725 (John Gorringe) or the society secretary Doreen Parfitt on Pembury 2909. The society's shows are open to non-members.

★ ★ ★

The Revd. David Graham will be installed as the new Pastor of Pembury Free Church at an induction service on 11 July at 2.30pm.

ACCIDENT REPAIRS

- ★ VEHICLE REPAIRS
- ★ BODY/CHASSIS ALIGN
- ★ LOW BAKE OVEN

- ★ QUALITY FINISH
- ★ COLLECTION/DELIVERY
- ★ INSURANCE APPROVED



Appointed members
Guild of
Master
Craftsmen

Established
1958



E. G. GREEN & SON

2 PETERSFIELD · PEMBURY

PEMBURY 2992

Pembury Resort *Hotel*

An exciting new hotel in Tunbridge Wells offering the following facilities:

- * 80 Superb bedrooms, including luxury suites
- * Conference and Function Rooms, accommodating up to 200 guests
- * Wedding Receptions for up to 120 guests
- * Elegant restaurant offering English and International cuisine
- * Superb Health and Leisure Club with indoor pool, exercise equipment, spa bath, sauna, sunbeds and massage room.

**WE WELCOME
NON-RESIDENTS**

Please call Judith Campbell or Tony Fletcher
on
PEMBURY (0892 82) 3567

Youth Centre forges ahead

Pembury YMCA Youth Centre, recently refurbished and flourishing, has 100 members and is open Saturday mornings and three evenings a week.

Wednesday: 7.00 to 9.30pm for the 15 plus age group. Workshop sessions encourage and develop musical, dramatic and technical skills in creating entertainment (50p).

Thursday: 7.00 to 9.00pm for 13 and 14 year olds to use the many facilities and plan their own sport and leisure activities and interesting trips (Members 50p).

Friday: 7.00 to 9.00pm for the 10 to 12 year olds, to combine indoor and outside activities, e.g football, uni-hoc and night hikes (Members 50p).

Saturday: 9.30am to 12 noon for 7 to 9 year olds, with sport, games, stories, quizzes and competitions (Members £1).

The YMCA resources are impressive and now with four centres – St John's (Pagoda), Tonbridge, Sherwood and Pembury and a mini bus – there is increasing scope for joint events as well as outings further afield, such as to Maidstone YMCA for roller skating.

In addition to the regular club sessions, there are daily activities during school holidays and at half term. The building is also available for letting for children's parties and social events. To make a booking please telephone either West Kent YMCA on 0892 542209 or Andy Hay, Centre Manager on Pembury 3330.

Pembury YMCA Youth Club is actively supported by Pembury Parish Council who have made an annual donation of £500 towards staff salaries.

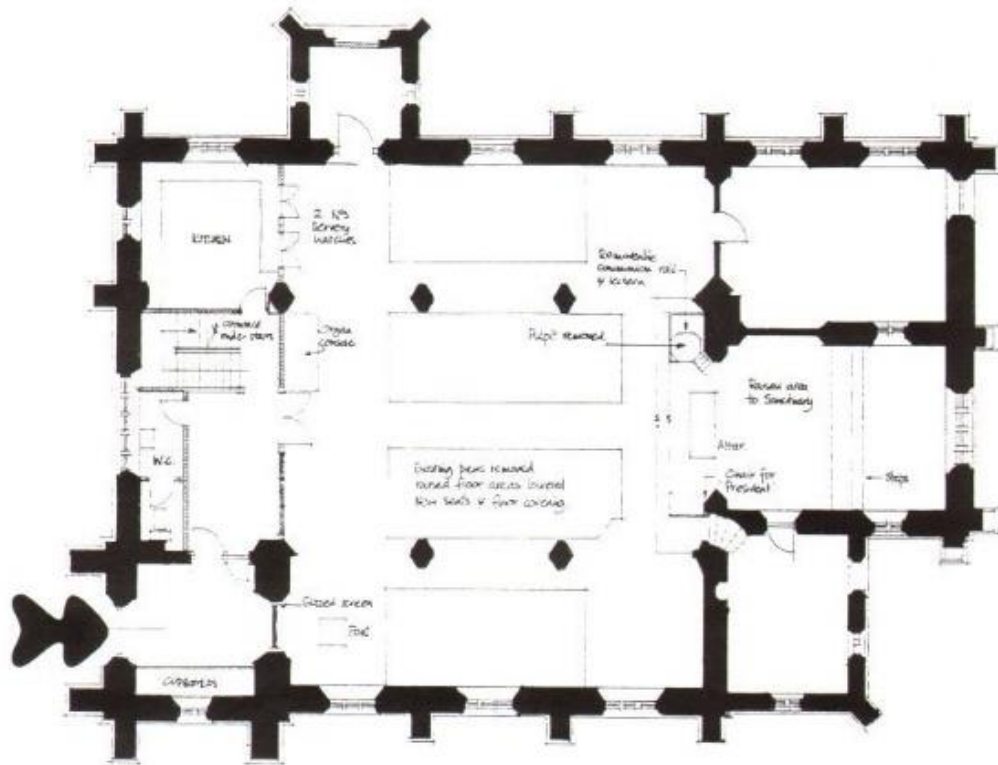
National Music Day

Sunday 28 June is National Music Day, when the aim is to get people of all ages and backgrounds involved in music of all kinds. It is hoped that local schools, music groups, church choirs and so on will organise their own event.

Kent College is hosting the first round of the International Young Artists Competition starting on Friday 26 June. The college has its own Music School with excellent rehearsal and concert facilities. Competitors, ranging in age from 15 to 28, will be coming from 33 different countries and from 49 English towns and cities, including three from Tunbridge Wells.

Round two will be held in Tunbridge Wells Assembly Hall on the Sunday to coincide with National Music Day, culminating with the Grand Finals in the evening when the four prizewinners will be announced and a crystal goblet awarded to the overall winner.

NEW LOOK FOR UPPER CHURCH



Ground plan showing the layout of the re-ordered Upper Church of St Peter.

Major work on alterations to make Pembury's Upper Church a more workable building and a real focus for parish life is expected to begin this autumn. The projected cost for this re-ordering of the church is estimated at £150,000, of which £30,000 has already been donated.

Ideas for the re-ordering have been under discussion for a number of years, but now permission from the diocese has been given to a far-reaching scheme. First presented to the Parish in 1989, these plans have since been on view to the public.

The Vicar, the Revd. Jim Brasier, says: "The proposals will provide us with much needed space required for our present

activities on Sundays and will enable us to expand our weekday activities as well. The essential character of the church will be preserved.

"So as to retain the sacred nature of the building the highest priority will be given to refurbishing the chancel as the permanent worship space in use throughout the week."

The need for making the Upper Church suitable for a wider range of church events has been apparent for a long time. Unlike most parishes, St Peter's has no church hall of its own. In the past, village property belonging to the Church has been sold off, leaving no adequate provision for meet-

ings involving even a modest number of people. The Village Hall is fully booked throughout the year, while the availability of the Roman Catholic Hall clearly depends on that church's prior needs. The Vicarage is also in frequent use, but is limited for space.

"The whole village has the right to come to their parish church for the parish priest to provide the rites of passage – birth, marriage and death," says Mr Brasier. "But what about the times in between? The pulse still beats in the parish and other needs have to be met."

The work

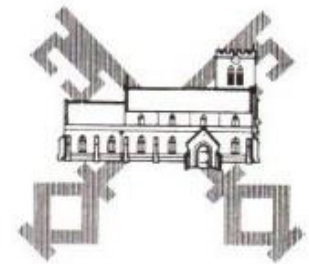
Initially the work will involve changing the layout of the sanctuary. This means that the altar and communion rail are brought forward, so that all parts of the service are visible to the whole congregation. The stone pulpit is to be replaced by a wooden lectern which will also serve as a pulpit.

The scheme will also entail the removal of the existing large pipe organ and putting in its place a digital instrument. Mr Brasier stresses that this will produce comparable sound and quality but will give greater flexibility, since a digital organ can also be played by a pianist.

Alterations at the west end of the church will include installing a toilet, a fully-fitted kitchen, an upper room and storage space. It is hoped the kitchen will be used to provide a weekly lunch club for shoppers or the elderly, a coffee shop and catering for parish events such as Harvest suppers and socials. The meeting room is likely to be much in demand for use by the parochial church council and other village societies and committees.

With the rearrangement of the tower door as the main entrance into the church, the north porch will be closed and furnished as a counselling or interview area.

Other work to be done will be the removal of the pine pews and levelling the floor of the nave and aisles. This will provide a more flexible arrangement of individual seating for worship and give a clear space in the nave that could be used for other church functions.



Background

St Peter's Upper Church, which was built in 1847, is a plain Victorian gothic construction of sandstone. Its nave has north and south side aisles and there is a rectangular chancel. Since being built it has seen several significant changes. It originally had a steeple, which had to be rebuilt in 1886. Almost a century later, fears about its safety eventually led to its dismantling. The church was enlarged in 1895 and the present plans for re-ordering will continue its on-going development.

Raising the money

The main fund raising event this year will be Gift Day on Saturday 4 July, when the Vicar and churchwardens will be sitting outside the church all day to receive gifts and donations.

"Apart from money and gifts in kind, we should be just as pleased for people to donate their talents and skill," Mr Brasier explains. "An all-out effort on many fronts is needed to ensure that the various stages of work are carried out. The church is the village's heritage with a vital part to play in its everyday life, so we are hoping for a really good response."

The fund raising was started last year with the launch of Vision 91, whose campaign logo is shown on this page – it depicts the church superimposed on the keys of St Peter.

Accompanying this newsletter is a leaflet from the re-ordering committee which gives more information about the improvements to the church and describes different ways to make donations.

JULIE T. BLAKE

IHBC, BABTAC



PROFESSIONAL BEAUTY THERAPIST



(5 YEARS' EXPERIENCE)

FULL RANGE OF PROFESSIONAL BEAUTY TREATMENTS
AVAILABLE WITHIN COMFORTABLE AND PRIVATE SURROUNDINGS

SPECIALISED DERMOLOGICAL FACIALS * ELECTROLYSIS
MANICURES/PEDICURES * * * WAXING
BRIDAL/SPECIAL OCCASION MAKE-UP * TOP-TO-TOE TREATMENTS

Products do not contain artificial fragrance and are cruelty free.

Please telephone for a list of treatment details. PEMBURY (089282) 4059

Brian V Toogood



DOMESTIC & COMMERCIAL CARPETS & VINYLs SUPPLIED & FITTED



OVER 28 YEARS' experience EST 1977
*Any make of carpet available.
Pattern books brought to your home.*

FOR PERSONAL & PROFESSIONAL SERVICE TEL: PEMBURY 4252

24 HOUR SERVICE 5.30 pm - 8.30 pm (089283) 4263

AARON FLOWERS LTD

124 HENWOOD GREEN ROAD

PEMBURY (089282) 2721

AARON FLOWERS LTD

PEMBURY HOSPITAL

PEMBURY (089282) 3388

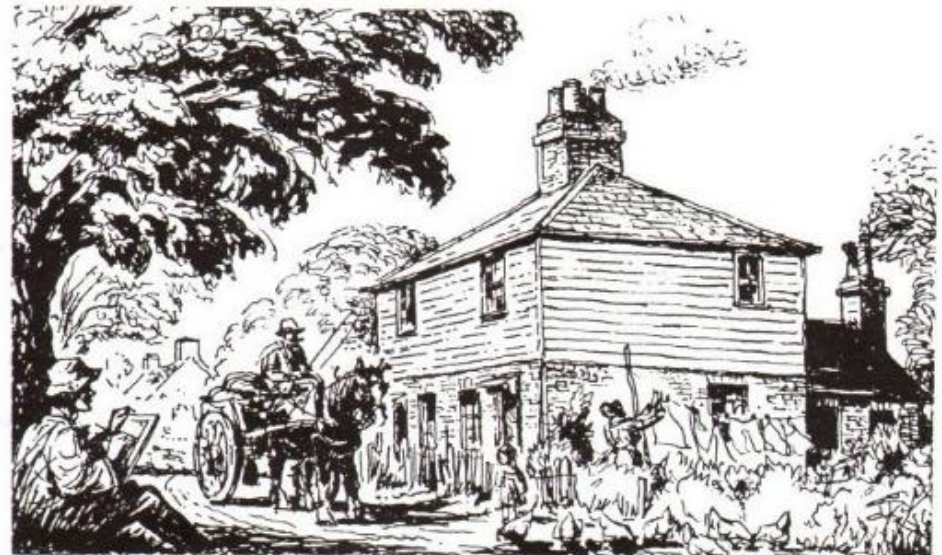
OPEN 7 DAYS A WEEK

OFFICE, FLOWERS & PLANT CONTRACTS, WEDDINGS,
FUNERAL TRIBUTES
FLORAL & PLANT ARRANGEMENTS INC. FRUIT BASKETS
SILK & DRIED FLOWERS, BOTTLE GARDENS



INTERFLORA BY CREDIT CARD

LOOK BACK



RUMFORD COTTAGES. c. 1860

James Holland. c. 1984

A pleasant walk for a sunny summer evening is a stroll along Romford Road, where some of Pembury's most attractive houses and gardens can be seen. This road has remained relatively unchanged for decades, with a limited amount of new building, so it is still possible to envisage the scene as it was earlier this century.

Then, there would have been more farmland and hop gardens and along the road itself would have been many more oak trees, as the large number of oak tree stumps to be found in the hedgerow indicates. Timbered Mays Farm and its farm cottages would have been one of several thriving farms in this part of Pembury. The cottages were pulled down in 1961 and replaced by two modern houses, while the barn has also, more recently, been converted into a house.

Further along Romford Road the name on the gate of one dwelling gives a clue to its past. Forester's Cottage was, until 1917, a

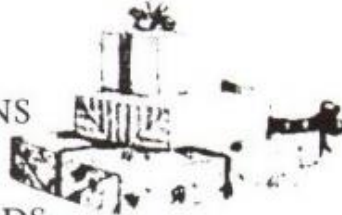
beer house known as the Forester's Arms. Here, the village farm workers could have a quiet pint, buy their tobacco and enjoy each other's company. According to one local historian, the regulars had a particularly intriguing name for this watering hole: they called it The Peep and Slip-it, a name that defies reason.

A short distance on is another mid-Victorian house called Romford Cottage. Built in 1840 as two farm labourers' cottages, it originally had a donkey house at the back. This was demolished by the present owner, Mr James Holland, to make way for his studio, but he has included it in his delightful drawing (above) of the cottages as they would have appeared in 1860.

Mr Holland, who has lived at Romford Cottage for just over 20 years, says that it stands on the site of an earlier building dating from 1734 and occupied first by a yeoman of Brenchley.

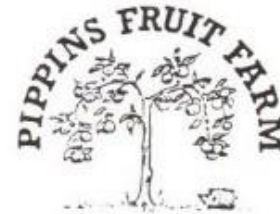
Best Wishes

- ☆ TOYS
- ☆ CARDS FOR ALL OCCASIONS
- ☆ STATIONERY
- ☆ CAKE DECORATIONS/BOARDS
- ☆ PHOTOCOPYING
- ☆ FAX BUREAU (Send £1.50, Receive 50p)



14A HIGH STREET (Rear Denise Barnes Estate Agent) PEMBURY 2129

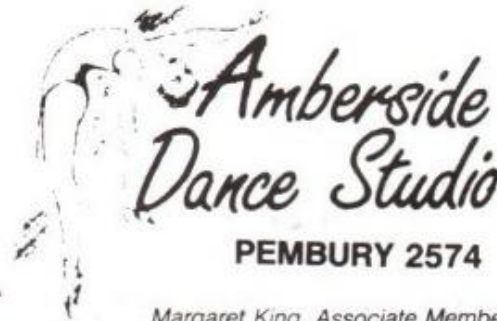
PICK
—
YOUR
—
OWN
&
READY
PICKED
FRUIT



Maidstone Rd, Pembury
Pembury 4569

STRAWBERRIES & RASPBERRIES
LOGANBERRIES & TAYBERRIES
GOOSEBERRIES & REDCURRANTS
BLACKCURRANTS & BLACKBERRIES
PLUMS & CHERRIES
APPLES & PEARS

Also PIPPINS VINTAGE KENT CIDER
June-October: See local press for details



PEMBURY 2574

Margaret King, Associate Member
of the Imperial Society of Teachers of Dancing for
Ballet, Modern Theatre and Tap.

ALL GRADES & ISTD EXAMINATIONS
Special Pre-school Classes

ANDREAS ANTICS for Adults
A carefully devised programme
of exercise

WEDNESDAY EVENINGS
AND

TUESDAY MORNINGS
(creche for toddlers)
PEMBURY 3961

ORD-HUME

Director of Funerals in Tonbridge and
District for over 40 years

DAY AND NIGHT SERVICE

DAIMLER FLEET

Owned and Administered by

J.K. Ord-Hume, BIFD, MRSH and A. Ord-Hume
Manager Michael Elvy

33a Quarry Hill Road
Tonbridge

(0732) 353746 or 361155

CHAPELS OF REST



Home Improvements – Extensions – Free Estimates

ALAN CLARKE

BUILDERS & DECORATORS

Tel. Pembury 3932

PENN OF PEMBURY



BUILDERS & CONTRACTORS

Domestic & Commercial
Extensions Conversions Alterations
Repairs & Maintenance

13, High Street, Pembury. Tel 2615

JILL NOAKES DRESSMAKER

Pippins Farm, Pembury

We offer a comprehensive and professional service in all forms of curtain making, tie backs and valences.

Dressmaking is carried out to a high standard and we specialize in wedding gowns made to your own designs.

Full alteration service.

Pembury
4260

YOUR CLERK REPORTS

In March a new activity adventure unit with safety surfaces was installed in the Recreation Ground. This is proving to be very popular with the many children who make use of the facilities. The kindergarten area is fenced off and a self-closing gate has been fitted in order that a total dog ban can be put into operation. So please, for the sake of the children, do not allow your dog to enter this area.

New seats have been placed on the Village Green and it is good to see so many people making use of them in such lovely surroundings. Many thanks again to the Women's Institute for the colourful displays of flowers and plants in the Margery Polley horse trough.

A new tractor has been purchased for use on the village grounds and this is proving to be very efficient. Hopefully, by the time you read this edition, new Parish Council notice boards will have sprung up around the village to replace the very old, battered ones. Charity events can be adver-

tised on these boards by contacting the Clerk's office.

There are several plots available for rent on the allotments at Woodside Road, the cost for one year's rent being only £10 for a full plot and £5 for a half plot. I understand the soil is very good and some holders have cultivated their plots for many, many years.

Hard tennis court tickets can be obtained from the Clerk's office at a cost of: £6 for one month, £10 for two months or £30 for a year. Foot-path maps are also available, a donation of £1 being requested. The possession of one of these maps will give you many hours of pleasurable walking throughout Pembury, with the knowledge that if you follow the paths you will not be trespassing.

Finally, the Clerk's office opens between 9am and 1pm Monday to Friday, during which time I am available for all Parish matters.

Barbara Russell
Clerk to the Council



25 High Street Pembury
Telephone 3878

Karen Errett BSc MBCO Ophthalmic Optician

- Friendly, professional service.
- Late night and Saturday morning testing
- Contact lens fitting, solutions & accessories.
- Over 300 frames on display.
- Glaucoma screening

OPENING TIMES Monday, Tuesday and Friday 9.00am-5.00pm
Thursday 9.00am-8.00pm Saturday 9.00am-1.00pm
(Closed for lunch 1.00pm-1.40pm and all day Wednesday)

Burtons Pembury's Solicitors

Penn House
13a High Street
Pembury

Tel Pembury 4577

YOUR REPRESENTATIVES

- County Council** Derek Hawes Richards, Hop Press Oast, Mascalls Court Road, Paddock Wood.
Tel: 834692
- Borough Council** Mrs Sylvia Abbott, 18 Lower Green Road. Tel: P 4031
Mr Terry Cload, 56 Herons Way. Tel: P 3966
Mrs Hildy Swinden, 6 Church Road. Tel: P 3378
- Parish Council** Mr Ron Abbott, 18 Lower Green Road. Tel: P 4031
Mr Hugh Boorman, 52 Henwood Green Rd. Tel: P 3068 *Chairman Planning Committee*
Mr Terry Cload, 56 Herons Way. Tel: P 3966
Mr David Coleman, 22 Ridgeway. Tel: P 3402 *Chairman Highways Committee*
Mr Derek Goodwin, 27 Greenleas. Tel: P 3822
Mr John Hawker, 1 The Rowans. Tel: P 4327 *Chairman Public Relations Committee*
Mr Kit Kelly, 22 Hastings Road.
Mr Dick Miles, Fletchers Farm, Hastings Road. Tel: P 2378 *Chairman of Parish Council*
Mr Henry Plant, 16 The Coppice. Tel: P 3459 *Vice Chairman of Parish Council*
Mrs Betty Roberts, 16 Woodhill Park. Tel: P 4914 *Chairman Burial & Allotments Committee*
Mr Arthur Storey, 13 Henwood Green Rd. Tel: P 2509 *Chairman Amenities Committee*
Mr Bob Wilkes, 6 Belfield Road. Tel: P 3264 *Chairman Environmental Committee*
Mr James Wiltshire, 4 Henwood Mount. Tel: P 4574

*Let Us Make
That Occasion*

Really Special
Let

*Whether its a small lunch
or dinner party, a buffet or
a large reception
at Home or at the Office*



Sam's Kitchen

Take it Over. Full details From
39 Heskett Park Pembury
Kent TN2 4JF

PHONE: 0892 82 2891

Weddings our Speciality

VILLAGE ORGANIZATIONS

ACCESS FOR THE DISABLED COMMITTEE
Local Representative Mrs. J. Peckham. Tel: 4132

AGE CONCERN
Mrs. Josephine Darville. Tel: T.W. 22591

ALZHEIMERS DISEASE SOCIETY
Simon Rooksby, Pineview Day Hospital, Pembury Hospital. Tel: 3535 Ext 3515

ASSOCIATION OF PEMBURY FOOTBALL CLUBS
J. Smith, 18 Westway. Tel: 3714

BOWLS CLUB
Secretary: S. G. Roberts, 16 Woodhill Park, Tel: 4914

PEMBURY BROWNIES GUIDER
Mrs. Boorman, 65 Heskett Park. Tel: 2355

BURMA STAR ASSOCIATION
Mr A. E. Pimblett, 66 Henwood Green Road. Tel: 3825

CAMDEN GREEN BADMINTON CLUB
R. Holt, 50 Ridgeway. Tel: 3830

CATHOLIC CHURCH
Rev. Geoffrey Pointer, The Presbytery, 11 Alliance Way, Paddock Wood. Tel. P.W. 3699

CONSERVATIVE PARTY
Terry Cload, 56 Heron's Way. Tel. 3966

CRICKET CLUB
P. Chandler, 149 Sherwood Road, Tunbridge Wells. Tel: Tunbridge Wells 33886

CUBS
J. Wiltshire, 4 Henwoods Mount, Tel: 4574

DARBY & JOAN CLUB
Mrs. B. Greatrex, 52 High Street. Tel: 2669

FRIENDS OF PEMBURY HOSPITAL
c/o Pembury Hospital, Tel: 3535

FRIENDS OF PEMBURY PARISH CHURCH
Secretary: Mrs A. Toler, Pembury Hall Cottage, Old Church Road. Tel: 4071

GUIDE GUIDERS
1st Pembury Company: Mrs. A. Baker, 67A High St. Tel: 4441
3rd Pembury Company: Mrs. J. Lakeland, 7 Greenleas. Tel: 4916

HOCKEY CLUB
James Whitehorn, Tel: 4854

HORTICULTURAL SOCIETY
Mrs D. Parfitt, 51 Church Road. Tel: 2909

JUNIOR FOOTBALL CLUB
L. Frowde, Hawkwell House, Maidstone Road. Tel: 2826

KENT COLLEGE
Headmistress: Miss Barbara Crompton. Tel: 2006

KENTISH VALE ROUND TABLE
Mr Everden. Tel: Paddock Wood 4685 or Paddock Wood 2823 (business)

KENTISH VALE LADIES' CIRCLE
Mrs. Wendy Kingcome, 11 Fellows Way, Hildenborough. Tel: H'boro 833403

KING WILLIAM IV FOOTBALL CLUB
Mr M. Lefevre, 29 Willow Cres., Five Oak Green. Tel: Paddock Wood 2165

LABOUR PARTY
Kevin Barden, 24 Beagles Wood Road. Tel: 4708

LADIES' NETBALL CLUB
Mrs. M. Walker, 65 Belfield Road. Tel: 3439

LARKFIELD HALL
Principal: A. James, Cornford Lane. Tel: 2168

LAWN TENNIS CLUB
Mrs. S. Smith, 2 Ridgeway. Tel: 2405

LIBERAL DEMOCRAT PARTY
Mrs. H. Swinden, 6 Church Road. Tel: 3378

MUMS AND TINY TOTS CLUB
Mrs. P. Anderson, 24 Malton Way. Tel: 2986

OUTGROWN CHILDREN'S WEAR
Mrs. J. Fuller, 28 Henwoods Mound. Tel: 4079

PEMBURY BUSINESS ASSOCIATION
T. P. Burton, 13a High Street. Tel: 4577

PEMBURY FOOTBALL CLUB
L. Frowde, Hawkwell House, Maidstone Road. Tel: 2826

PEMBURY FOOTPATH WALKERS
N. & K. Franklin, 11 The Meadow. Tel: 3212

PEMBURY FREE CHURCH
Rev. David Graham. Tel: 4917

PEMBURY FREE CHURCH PLAYGROUP
Mrs. Alison Burgess. Tel: Tunbridge Wells 515714

PEMBURY FRIENDS OF SEVEN SPRINGS
Mrs. Durant, 39 Lower Green Road. Tel: 2196

PEMBURY LADIES' SOCIAL GROUP
Mrs. C. Segens. Tel: 3846

PEMBURY UPPER AND PARISH CHURCH
Rev. Jim Brasier. Tel: 4761

PEMBURY PLAYERS
Chairman: J. Norman Draper. Tel: 3975

PEMBURY PLAY GROUP
Mrs. B. Hallam, 8 Gimble Way. Tel: 2391

PEMBURY PRIMARY SCHOOL
Headmaster: Mr. R. Nisbet, Lower Green Road. Tel: 2259

PEMBURY SEQUENCE DANCE CLUB
Secretary: Mr. Bob Christopher. Tel: 2728

PEMBURY SHORT MAT BOWLING CLUB
Mr. E. Ruddell, Chiringa, Pembury Grange. Tel: 4498

PEMBURY SOCIETY
R. Abbott, 18 Lower Green Road. Tel: 4031

PRIMARY SCHOOL PTA
Mrs. R. Burton, Secretary. Tel: 4491

ROYAL BRITISH LEGION
J. Young, 13 Bulls Place.

ROYAL NATIONAL LIFEBOAT INSTITUTION
W. H. Dee, 1a Woodhill Park. Tel: 3131

SANDRA'S HOUSE
Pre-School Nursery at Y.M.C.A. Henwoods Mount. Mrs. S. Toogood. Tel: 4252 (non-nursery hours) mornings: Pembury 3330

SCOUT GROUP
J. Wiltshire, 4 Henwoods Mount. Tel: 4574

SCOUT AND GUIDE HQ MANAGEMENT TEAM
P. and J. Boorman. Tel: 2355

TUNBRIDGE WELLS & DISTRICT VICTIM SUPPORT SCHEME
Tel: 0892 513969

VENTURE SCOUTS
Bernie Roberts, 13 Camden Avenue. Tel: 2932

VILLAGE HALL
Manager (bookings): Denis Dawes, 29 Greenleas. Tel: 2311

WOMEN'S INSTITUTES
Afternoon: Mrs. Eileen Watson, Oak Cottage, Romford Road. Tel: 2607
Evening: Mrs. Chris Johnson, 3 Woodhill Park. Tel: 3150

W.R.V.S.
Mrs. H. Swinden, 6 Church Road. Tel: 3378

YMCA
Andrew Hay, Pembury YMCA. Tel: 3330

FOR YOUR DIARY

- JULY**
- 2 Afternoon WI: Talk on black and white photography by Mr Peter Greenwood, Village Hall 2.15pm.
 - 3 Evening WI: "Improve your photography", talk by Mr L. Dyson, Village Hall 7.45pm.
 - 4 Pembury Footpath Walkers: walk starting from the Camden Car Park at 2.15pm.
 - 7 Darby and Joan Club meeting, Village Hall 2-4.30pm.
 - 11 Horticultural Society Summer Show, Village Hall 2.30pm.
 - 13 Horticultural Society Floral Art Group, Village Hall 8pm.
 - 20 Parish Council Meeting, Village Hall 8pm.
 - 21 Darby and Joan Club Garden Party at 52 High Street, 2pm.
- AUG**
- 1 Pembury Footpath Walkers: walk starting from Bo-Peep Corner 2.15pm.
 - 4 Darby and Joan Club meeting, Village Hall 2-4.30pm.
 - 6 Afternoon WI meeting at Village Hall 2.15pm.
 - 7 Evening WI meeting at Village Hall 7.45pm.
 - 10 Horticultural Society Floral Art Group, Village Hall 8pm.
 - 18 Darby and Joan Club meeting, Village Hall 2-4.30pm.
- SEPT**
- 1 Darby and Joan Club outing to Canterbury, leaving Sunhill 1pm.
 - 3 Afternoon WI: talk by Mrs Ann Harris "On being National Chairman", Village Hall 2.15pm.
 - 4 Evening WI: Machine knitting demonstration by Mrs C. Norrington, Village Hall 7.45pm.
 - 5 Pembury Footpath Walkers: walk starting from Stonecourt Lane 2.15pm.
 - 7 Parish Council Meeting, Village Hall 8pm.
 - 12 Horticultural Society Autumn Show, Village Hall 2.30pm.
 - 14 Horticultural Society Floral Art Group, Village Hall 8pm.
 - 15 Darby and Joan Club meeting, Village Hall 2-4.30pm.
 - 24 Horticultural Society: Illustrated talk "Colourful bulbs for all seasons", Village Hall 8pm.
 - 28 Parish Council Meeting, Village Hall 8pm.
 - 29 Darby and Joan Club meeting, Village Hall 2-4.30pm.

ST. PETER'S CHURCH SERVICES

Upper Church

8.00 a.m. Holy Communion
9.45 a.m. The Parish Eucharist and Junior Church
10.00 a.m. Holy Communion (Wednesdays)

Old Church

11.30 a.m. Matins (except first Sunday, Holy Communion)

Evening services as advertised on Church noticeboards.

Every Friday - Pembury Village Market - V. Hall 9.45-11.15 a.m.
Every Monday - Pembury Sequence Dance Club - Catholic Hall 7.45-10.15 p.m.

