

# STURGEON'S OF PEMBURY

Specialists in all types  
of Road and Drive  
Construction

Coal Merchants  
Haulage Contractors

Henwood Green, Pembury. Tel: 822221/2/3

# PEMBURY VILLAGE NEWS

Issue 78 / Summer 1994



ACCENT ON  
YOUTH –  
SEE CENTRE  
PAGES

## Contents

Viewpoint	2
School Head Retires	3
Pembury's Old Parish Church	4
Councillors Comment	5
Police Update in Pembury	6
Highways petition	6
Profile	9
Teacher says goodbye	11
Nursery School's new home	12
Woodside Youth Club	13
Thinking Day Celebrated	13
In Brief	15
Your Clerk Reports	19
Cllr. Betty Roberts writes	19
For Your Diary	23



# Viewpoint

A motoring holiday in France this spring brought home to me the real difference between us English islanders and the continental French. Ever since 1066, when the Normans were the last to make a successful invasion, England's seagirt shores have held foreign armies at bay and our history has been one of insular security. How different for the French.

Always a prey to envious eyes in the east, the sensible French have often found very pragmatic solutions in times of trouble. In the 16th century, when the Netherlands were held by Spain, and in the 17th century during the Thirty Years War, the Thiérache region of France – the area around Vervins and the western Ardennes – was repeatedly invaded, plundered and burnt. In a richly agricultural landscape the village folk couldn't trust anyone, sometimes not even their own landlords, so they found a practical solution. They fortified their churches and used them as shelters, moving into them with their goods, provisions and animals until peace returned. Many of these églises fortifiées, with their round, brick towers and arrow or musket slits, can still be seen in this area – indeed, they have become something of a tourist attraction.

It is the two wars of the 20th century, however, that have left the saddest legacies. The whole of northern France is strewn with cemeteries and memorials to the fallen; this year, the 50th anniversary of the D-Day landings, our attention is focussed on those in Normandy. Perhaps one of the most symbolic monuments is one in Verdun, depicting five soldiers (representing the five regiments involved) standing shoulder to shoulder, a visual expression of "they shall not pass", the determination which made the Battle of Verdun the turning point in the 1914-18 war.

But it is in the peaceful wooded mountains of the Vosges that one of the most unexpected and shocking monuments of the 1939-45 war is to be found – the Struthof Concentration Camp, preserved almost intact. At the summit of the col on the road from Rothau to Obernai, the camp received convoys coming from all the occupied countries, among them many French people, who were destined for extermination. According to the Michelin Guide, some 10,000 prisoners died constructing the camp and the road up to it; all the building material was brought up on their backs from the bottom of the valley. The necropolis above the camp contains the remains of 1,120 deportees, a hauntingly sombre place.

Seeing these heart rending memorials underlines just how much terror and violence the French have endured over the centuries. And it is La Manche that has spared us some of the worst horrors of war.

The opening of the Channel Tunnel rail link now starts a new chapter. La Manche is no longer a barrier. So let's make sure the ties of Anglo-French friendship are strengthened, that more and more towns are twinned, that our youngsters become bilingual, and that we acquire some of the French 'joie-de-vivre'. After all, we share a Norman ancestry!

Editor

## PEMBURY VILLAGE NEWS

EDITOR  
Elizabeth Repath

Pembury Village News is published four times a year by the Parish Council, but the views expressed in the magazine do not necessarily represent official council opinion or policy. Typeset and printed by Optyca Printing Ltd, East Peckham.

## SCHOOL HEAD RETIRES

Richard Nisbet, head teacher at Pembury School since 1977, is retiring this summer. He has seen many changes during his headship, but the introduction of the new national curriculum, now under way, has been one of the major challenges.

In 1977, with a roll of 550 pupils, the school was still expanding and during the next three years the numbers went up to 670. This influx was the result of the post-war "baby boom" and the building of new estates in Pembury. However, from the beginning of the 1980s, in line with national trends, numbers started to decline and the present total is a more comfortable 417. With a two form entry, another recent change has been the lowering of the age at which children can start school: it is now down to 4½ years.

"I have always been very concerned to maintain a high standard of education," says Mr Nisbet. "Our results have been consistently good and 50 per cent of this year's leavers will be going on to grammar schools, which is above the county average."

He has also tried to improve the school's facilities. The information technology side has been developed and all classes are now equipped with computers. There is a very good, much-used in-school library which parents help to run. In an effort to bring the school back into the local community, he revived the tradition of maypole dancing on the village green and has encouraged links with the Darby and Joan Club and Pembury Hospital. The schoolchildren have also created ties of friendship with a similar school in Pembury's "twin town" of Ronchin in northern France.



After the 1988 Education Act came into force a new system of local management of schools was brought in and Pembury Primary became the only pilot school for this when it was initiated in West Kent.

Because of his wide experience, it was at this time that Richard Nisbet was one of only two head teachers asked to help in writing the KCC's comprehensive school governors' training manuals. Before coming to Pembury, he had been head teacher at Chartham Primary School, near Canterbury, for 13 years and was the youngest head teacher in Kent when he was first appointed there. Prior to that he was acting head teacher of Westwell CP School and deputy head of Beaver Green School in Ashford. He has also served as president of both the Canterbury and Tunbridge Wells Association of Head Teachers.

As to future plans, he says that he will remain in the village and will continue as a governor of the Kent Music School. When his wife Mary retires, they both hope to spend more time travelling, especially in France.



## PEMBURY'S OLD PARISH CHURCH

For over eight centuries the old Parish Church of Pembury has served as a place of worship. When it was built c.1127 it would have been in the centre of the community of Pepenbury Magna with its Manor of Hawkwell. For many years the priests came from Bayham Abbey, however, very little remains of the original church, as the building that is there today was given as a thank-offering to God by Sir John Colepeper in 1337.

The Colepeper or Culpeper family lived at Bayhall manor in Pepenbury Parva. This lesser manor lay to the south of the village and so was some distance from the Church. In 1323 the family had had to forfeit Bayhall to the crown as Thomas Colepeper, of Hollingbourne, had insulted Edward II and his Queen. Later, the Colepepers were restored to royal favour and Bayhall was given back to Thomas' son, John. At about the same time John married into the wealthy Hardreshull family. It was his wife's money which helped to rebuild the church and also a chantry chapel in 1337. The armorial bearings of the two families can be seen on the buttresses on the south wall of the Church.

The chantry chapel has long since disappeared. It was pulled down around 1547 and no one seems to know exactly where it stood, although foundations of some kind have been found at the eastern end of the church.

Obviously over the ages the church has undergone a number of minor changes. At one time there was a gallery, a three-decker

pulpit and box-pews. These were removed in 1860, when our Victorian ancestors made a number of changes to the church. The floor of the chancel was raised two steps. This meant that an interesting old tomb was covered over. Margaret, daughter of Sir Thomas Colepeper, was buried here.

There are a number of memorials which remain, including an Elizabethan brass to Elizabeth Rowe of Hawkwell, two large slabs in the sanctuary to the memory of the Amherst family, who lived at Bayhall, and the east window is dedicated to Stephen and George Woodgate who were Vicars of Pembury in the last century. In the tower is a memorial to Lord George Henry Spencer Churchill who died in 1828, aged 32. Descendants of these families come to the old church from all over the world today, seeking their ancestral roots.

For centuries the people of Pembury have looked after the church and worship has been continuous there for 800 years – **a service is still held there every Sunday morning.** It is a place which has an atmosphere of peace and tranquillity, rare commodities in this day and age. There have probably been times when its future has been in doubt, but it has survived. Are we going to be the ones to let it go? Please support the appeal being made by the Friends of the Parish Church.

**M. Standen**

## Councillors Comment

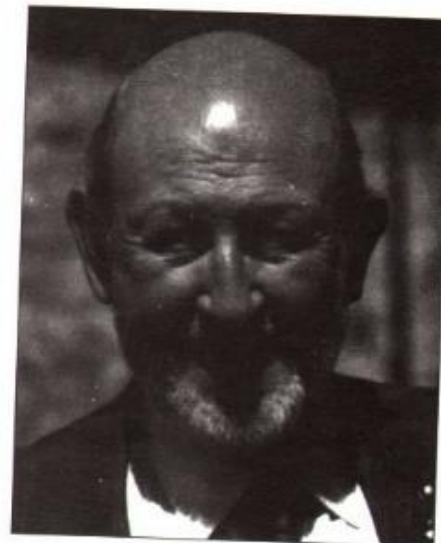
### “A State of Chassis”

For some months now, at the behest of the Government, a Local Government Commission has been reviewing the organisation of local government. At first we were told that everything had to change and that the old two-tier system of County Councils and Borough Councils would be replaced by more economical Unitary Authorities. As a consequence there would be more powers and responsibilities delegated to Parish Councils. As a Parish Councillor, how would this affect me? Furthermore as local residents, how would this affect us?

Now, after a decision by a High Court Judge, we are told that the status-quo is an option. Hence the “State of Chassis”. Will the K.C.C. be abolished? Will local government in Kent be divided into seven, five or even three Unitary Authorities? Or shall we stay as we are?

The Local Plan Inquiry, scheduled to finish at the end of March, has now been extended until the end of May. Hopefully, the Inspectors' recommendations will be adopted by the Borough Council before the end of the year. Major decisions, concerning such important matters to Pembury as the definition of the Green Belt, Woodsgate Corner and Park and Ride sites, have still to be made.

I am a member of the Highways Committee of the Parish Council. We sought and obtained a site meeting at Woodsgate Corner a year ago to seek ways of reducing accidents at this dangerous junction. Representatives of the K.C.C.,



Highways, Police, Tunbridge Wells and Pembury Parish Councils attended. However, it took a serious accident and a petition organised by a local resident to finally get action taken on this hazardous cross-roads. So the effect of the man, or in this case woman, in the street should not be underestimated. (See picture on next page).

I am also a member of the Amenities Committee of the Parish Council. We have made efforts to bring the amenities in the Recreation Ground up to date, with soft safety surfaces and new climbing apparatus. However, much remains to be done. The pavilion is in a very poor state, partly due to its age but also due in part to mindless vandalism. Should the Parish Council undertake costly programmes of renovation or rebuilding if the property is going to be vandalised again almost immediately? This is what happened to the new fence around the Bowling Green recently. Should we allow one or two vandals in the village to spoil things for the other 6,000 residents or are we prepared to do something about it?

**Ron Abbott**



## Police Update In Pembury

Crime figures for Pembury for the first four months of this year show that vehicles continue to be the main object of theft or damage. Of a total of 75 reported offences, 25 involved cars, with 11 stolen, nine broken into, five damaged and three abandoned. There were also 11 burglaries, nine of them from dwellings, and four domestic assaults, possibly alcohol related or due to the stress of unemployment.

There were 15 incidents of petty theft, seven of malicious damage to property and

the usual vandalism mainly involving the bowls club and the recreation ground. Pedal cycle theft, which last year was almost eradicated, is evident again, with two bicycles stolen in the last few months.

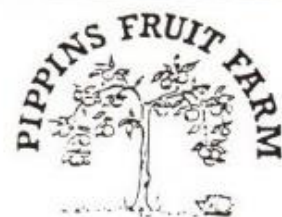
On the whole though, there has been no radical change in the type of wrong-doing in the village. Many of the petty offences are opportunistic or casual acts of vandalism and hopefully these should reduce once all the new parish special constables are fully trained and 'on the beat'.

The man co-ordinating their training is Section Officer Colin Munday, who is based at Paddock Wood.



The design of the Woodsgate Corner junction, which has become an accident blackspot, is to be reviewed following a petition from Pembury residents presented to the County Council in April. In the past three years there have been 11 personal injury accidents at this junction, but one cause of confusion for motorists – the west facing pedestrian/cycle crossing lights – has now been removed. The petition organiser was Mrs Margaret Samuel (second left) seen here handing the document with almost 1,000 signatures to Stephen Stenton, (left) co-chairman of the KCC's Highways Sub-Committee. Also present were Pembury Parish Councillor David Coleman (centre), Borough Councillor Sylvia Abbott and County Councillor Derek Hawes Richards.

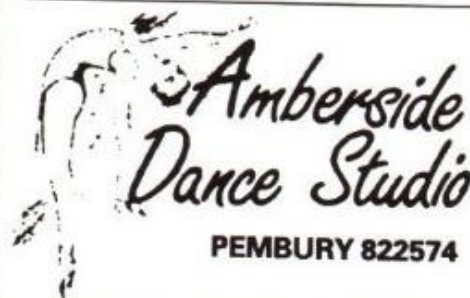
PICK  
—  
YOUR  
—  
OWN  
&  
READY  
PICKED  
FRUIT



Maidstone Rd, Pembury  
Pembury 824569

STRAWBERRIES & RASPBERRIES  
LOGANBERRIES & TAYBERRIES  
GOOSEBERRIES & REDCURRANTS  
BLACKCURRANTS & BLACKBERRIES  
PLUMS & CHERRIES  
APPLES & PEARS

Also PIPPINS VINTAGE KENT CIDER  
June-October: See local press for details



Margaret King, Associate Member of the  
Imperial Society of Teachers of Dancing  
for Ballet, Modern Theatre and Tap

ALL GRADES & ISTD EXAMINATIONS  
Special Pre-school Classes

PEMBURY 822574



Home Improvements – Extensions – Free Estimates

# ALAN CLARKE

BUILDERS & DECORATORS

Tel: Pembury 823932



# DOWNINGBURY

## FARM SHOP



## PICK YOUR OWN

We have a full range of fresh farm produce in our FARM SHOP. This is open 7 days a week from 9am – 6pm during the summer and 9am – 5pm during the winter.

We are situated on the Old Maidstone Road and our Tel. No. is (0892) 824282.

# JOHN WOODEN

ESTABLISHED PAINTER AND DECORATOR  
FREE ESTIMATES GIVEN FOR INTERIOR AND EXTERIOR WORK



Colour cards, tile samples and wallpaper books available.  
No job too big or too small so give me a call on **PEMBURY 824174**

## Aston Computer Consultants



- \* Independent Consultants to small and medium businesses
- \* FREE Initial Interview
- \* Your current and future business needs assessed
- \* Beginners Training in Word Processing and Spreadsheets
- \* Complete Support
- \* How you will save money for your business

Telephone: Tunbridge Wells (0892) 549119

# Profile

## Beryl Greatrex

Beryl has been the secretary of the Pembury Darby and Joan Club for 20 years and prior to that she was a committee member. She has recently decided to retire, a decision she regrets, but feels that a 'younger' member should now take over. The new secretary is Mr Charles Eason.

The Club is very popular and now has over 100 members. It meets in the Village Hall every other Tuesday afternoon for a variety of activities including talks, games, fund raising events and coach outings. Beryl said, "Being the club secretary was an enjoyable and happy experience, I enjoyed organising the activities". Beryl helped also with the Meals on Wheels for a time.

When Beryl and Bob first moved to Pembury, soon after they were married, 35 years ago, it was a very different place. They lived in the High Street, at Streatley Cottage, for a few years, and then moved to their present home. All around them were open fields, gardens and allotments. The Woodhill Park area was not built until the mid-60's.

However, the village was a well known traffic bottleneck, lorries thundered past even at night. At weekends and Bank Holidays cars crawled along the High Street, spreading noise and pollution. What a relief the A21 by-pass must have been to the Greatrex family, and their neighbours, after 30 years! Other changes that Beryl recalls are the numerous shops in the village, which have now closed. She particularly misses the old drapers' shop which sold many necessities from buttons to zips. She also remembers two cafes in the High Street.



Beryl has always lived in the Tunbridge Wells area. She was brought up in Albion Road. After attending St Andrews School in Upper Grosvenor Road she took a course at a Commercial College before starting a job as a typist. Working in an office in Tunbridge Wells in the 40's was very different from today.

Beryl and Bob brought up their two children, Philip and Judith, here in Pembury. They now have five young grandchildren, all the family live nearby and visit Pembury regularly. Beryl enjoys her home, she plays the piano occasionally, likes knitting, reading, crosswords, T.V. and radio and travel. A most memorable holiday was spent crossing Canada on the Trans-Canadian Railway, and a cruise visiting the Norwegian Fjords was very enjoyable but she does love the English countryside and recently returned from a holiday in the Lake District.

Everyone in the village wishes Beryl and Bob every happiness for the future and thanks them for all they have done for the people of Pembury.

Sylvia Abbott



The following are available from the Clerk's Office at

6 The Grove, Pembury 823193

## TENNIS PERMITS FOR THE HARD COURT ONLY

Monthly	£7.50
Two Monthly	£11.50
Yearly	£33.00

## JILL NOAKES

### DRESSMAKER

Pippins Farm, Pembury

We offer a comprehensive and professional service in all forms of curtain making, tie backs and valences.

Dressmaking is carried out to a high standard and we specialise in wedding gowns made to your designs.

Full alteration service.

**Pembury 824260**



Let Us Make  
That Occasion

*Really Special*  
Let



**Sam's Kitchen**

Take it Over.

Whether it's a small lunch or dinner party,  
a buffet or a large reception at  
Home or at the Office

Full details from  
39 Heskett Park, Pembury, Kent TN2 4JF

**PHONE: 0892 822891**

*Weddings our Speciality*

*Stanton House*



**Bed & Breakfast**

**Stanton House**

**Romford Road**

**Pembury**

**TN2 4AY**

**Tel: (0892) 82 5168 · Fax: (0892) 82 2482**

## Long serving teacher says goodbye

After 25 years teaching at Pembury School Mrs Mary Adams is retiring. Latterly, she has been in charge of year four and curriculum team leader for key stage two and has specialised in religious education and children with special needs.

But she will be most remembered for the part she has played since 1980 in training the young musicians and dancers for the school's annual maypole dancing event on the village green. This is a tradition that she hopes will be maintained.

"One of the most interesting projects I've done with the children," she says, "was the monitoring of the construction of the two by-passes. The children later took part in

the official opening."

Mary and her husband Charles, who both previously taught in Essex, came to Pembury in 1963 when he was appointed head teacher at St Peter's School in Tunbridge Wells. Their two children – a boy and a girl – both attended Pembury School and she herself was a school governor for four years.

Mary Adams says the family has been very happy in the village, which they have seen grow from a population of 2000 to over 6000. Now, she and her husband are looking forward to their retirement and spending more time on their hobbies of gardening and photography.



The children of Pembury School presented Mary Adams with a bouquet to mark her last year arranging the annual maypole dancing display on the village green. She is seen here with the May Queen, 11-year-old Jennifer Cooper.



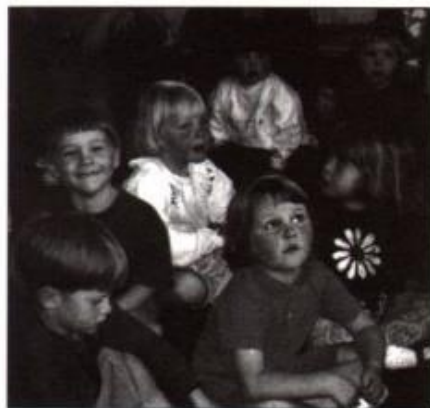


## Nursery School's new home

Sandra's House Nursery School's new location at Queen's Folly, Lower Green Road, was officially opened on 4 May by Borough Councillor Sylvia Abbott. An afternoon's entertainment and tea were provided for the children and their mothers.

A triple garage with room above has been well converted to give a large, well-lit activity area, while downstairs there is a "home" room with shop and a wash room. Outside is a nursery garden where a Wendy House will soon be built. At present some 60 children between two years and school age are on roll, with 20 attending each session.

**Mothers and children join in the fun at the opening of new premises for Sandra's House.**



*Tim Cole, 25, (seen right) is Pembury's new youth community officer in charge of youth club activities in the village. Recently, the refurbished Woodside youth club building was blessed by the Reverend Patrick Gillan from Pembury Free Church. Also present at the blessing ceremony was Alan Goodwin (left), the YMCA Operations manager for West Kent.*

## Thinking Day celebrated

The Pembury Guide Units met together for a joint celebration of Thinking Day on 22 February. The evening began with a few thoughts from Doris Riehm, chairman of the World Committee, on Change for Peace in 1994. The four Pembury units then gave their international items.

The Trefoil Guild has been linked with a Trefoil Guild in Vernon, British Columbia, Canada so their item was on Sparks, the junior units in Canada equivalent to the Rainbow units in Britain.

The 1st Pembury Guides reported on guiding in Gambia, Africa, describing the country, the guides and the main industry which is the making of 'batik' printed cloth, several examples of which were on display.

The 2nd Pembury Guides chose Australia and got everyone involved with a quiz on

the country. The winners of the quiz were Jay, 1st Pembury Guide Leader, and Trefoil member Hazel.

The 3rd Pembury Guides did a lively sketch on the USA – a 'pow-wow' on disputes between the Indians and the settlers and how they made peace and sealed their ideas by smoking a pipe of peace.

As each of the units finished their items night lights were lit to form a trefoil badge; refreshments followed with seven cakes, made by the Trefoil Guild, representing the seven new Guide badges. A campfire singsong rounded off the evening with songs from Canada, Gambia, Australia, America and Great Britain. Finally, the room lights were turned off and the Trefoil shone out with the singing of 'Taps'.





## General Accident Property Services

### WHAT DO YOUR AGENTS DO FOR THEIR COMMISSION?

### WILL YOUR CHOICE OF AGENT...

- Advertise at least 48 weeks of the year in colour in the Courier?
- Have over 350 offices countrywide?
- Provide staff to accompany viewers?
- Offer a flexible and personal service with commission rates to match?
- Have specialist Divisions dealing with:

Residential Lettings

Mortgages and Financial advice

Land & New Homes

First time buyers and sellers — "First Base"

Individual high calibre properties with Central London and publicity department — "GA Town & Country"

- Enjoy a reputation for trained and highly motivated staff?
- Have cash, overseas, as well as local buyers?

**WE CAN ANSWER YES TO  
ALL OF THESE**

**CALL US NOW PEMBURY 825355**

## IN BRIEF

THE annual Scout and Guide fete is on 16 July in the Recreation Ground at 2pm. Anyone who would like to have a stall should contact Paul Russell on Pembury 823193. Raffle tickets are now on sale from Ditchetts as well as volunteers who will try to visit every house in Pembury. The first prize is £100. Your support will be gratefully received. All funds raised will go towards the running and upkeep of the Scout and Guide Headquarters.

A VILLAGE exhibition will be held on 15 October in the Pembury School Hall. Any organisations wishing to exhibit should contact the Clerk to the Parish Council on 823193. There will be no charge to the exhibitors. More information will be forthcoming in due course.

THE Bishop of Rochester, soon to be Bishop of Durham, Bishop Michael, led a service of blessing and thanksgiving at the Upper Church of St Peter to celebrate the completion of the re-ordering of the church and of the Vision '91 project. The theme was pilgrimage.

CARLO Curley, a world renowned organ virtuoso known as the Pavarotti of the organ, will be giving a recital at St Peter's Upper Church on Saturday 25 June at 7.30pm. Tickets are £12.50, £10 and £7.50 and can be obtained by contacting David Brewster on Pembury 824607. The concert is to celebrate the re-ordering of the Upper Church and the installation of the Allen digital organ.

AT the Horticultural Society's AGM it was decided, as a mark of respect, not to appoint a new president immediately to replace Mr Geoffrey Theobald, who died in February. Mr Tom Pettitt, the society's treasurer for the past 25 years, announced his retirement and was presented with a framed certificate of life membership. The new treasurer is Mr Geoff Baxter.

THERE will be a Barn Dance at Pippins Farm on 23 July in aid of St Peter Upper Church. There will be a live band and a licensed bar. Tickets will be on sale from the Vicarage and other outlets in the village.

THE 2nd Pembury Fun Run will be held in September. A sponsor or sponsors are being sought at present and any offers will be gratefully accepted. Those who are interested in running should contact Pam Bristow, 69 Henwood Green Road, Pembury 824757 for an application form.

DON'T forget, there will be a chance on 6 July to watch the cyclists taking part in the famous Tour de France race when their route through England takes them along the A228 Pembury by-pass, via Woodsgate Corner to Tunbridge Wells. This stage of the race — from Dover to Brighton — is being sponsored by the KCC and the borough councils involved, including Tunbridge Wells.



# JULIE T. ROBINSON

IHBC, BABTAC



## PROFESSIONAL BEAUTY THERAPIST



(7 YEARS' EXPERIENCE)

FULL RANGE OF PROFESSIONAL BEAUTY TREATMENTS  
AVAILABLE WITHIN COMFORTABLE AND PRIVATE SURROUNDINGS

SPECIALISED DERMALOGICA FACIALS \* ELECTROLYSIS  
MANICURES/PEDICURES \* \* \* WAXING  
BRIDAL/SPECIAL OCCASION MAKE-UP \* TOP-TO-TOE TREATMENTS

*Products do not contain artificial fragrance and are cruelty free.*

*Please telephone for a list of treatment details. PEMBURY (0892) 824059*

# G. F. GROVES

Your friendly local builder

CARPENTERS  
JOINERS

BUILDING  
CONTRACTORS

**EXTENSIONS/CONVERSIONS/NEW-BUILD**

*PLANNING SERVICE AVAILABLE  
PURPOSE-MADE JOINERY*

FREE ESTIMATES  
FAST SERVICE

**TELEPHONE  
0892 838619**

SPONSORS OF PEMBURY UNDER 15 FOOTBALL TEAM

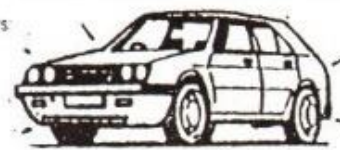
## ACCIDENT REPAIRS

- ★ VEHICLE REPAIRS
- ★ BODY/CHASSIS ALIGN
- ★ LOW BAKE OVEN
- ★ QUALITY FINISH
- ★ COLLECTION/DELIVERY
- ★ INSURANCE APPROVED



Appointed members:  
Guild of  
Master  
Craftsmen

Established  
1958



## E. G. GREEN & SON

2 PETERSFIELD · PEMBURY

### PEMBURY 822992



DENISE  
**BARNES**

ESTATE AGENTS

VALUERS

SURVEYORS

16 High Street, Pembury, Kent Tel: Pembury (0892) 822880  
and

The Heath, Horsmonden, Kent Tel: (0892) 724000

Your **INDEPENDENT** Estate Agency  
for personal, experienced and friendly service.

**FREE VALUATIONS** — Competitive rates.

**FINANCIAL ADVICE**



# S & B AUTOS

## ACCIDENT REPAIR SPECIALISTS



CAMDEN SERVICE STATION PEMBURY  
24-Hour Recovery Service



RE-SPRAYING      CHASSIS JIG ALIGNMENT  
LOW BAKE OVEN FOR FACTORY FINISH

*Come to the people who care  
Friendly advice — Courteous Service  
Fully Experienced Engineers*

# P. J. & J. M. Ditchett

## CHEMIST

Medicines  
Baby Products  
Kodak Films  
Developing & Printing

Cosmetics  
Fancy Goods  
Gift Sets  
Toiletries

**5, HIGH STREET, Pembury, ☎ 822896**

## Your Clerk Reports...

The Annual Meeting of the Parish of Pembury was held on 30 March in the village hall. The guest speaker was Cllr Kirby, Leader of Tunbridge Wells Borough Council who gave a talk on the impending Local Government Review. In addition Mr Coles, Environmental Health Officer for TWBC, was in attendance and answered a number of questions relating to the "Pembury smell".

The meeting was attended by 55 parishioners.

A full financial report was submitted and a brief summary is below:

Precept demanded from Tunbridge Wells Borough Council for 1992/1993	£99,922.00
Income from other sources	£20,484.16

Balance brought forward 1st April 1992	£34,678.26
Total Income	£155,084.42
Expenditure	£99,225.91
Balances c/fwd 31st March 1993	£55,858.51
The precept for the year 1993/1994 was	£91,183.00
The precept for the year 1994/1995 is	£95,212.00

A reminder that anyone wishing to rent an allotment should contact me on Pembury 823193. Full plots are £12.50 per annum and half plots £6.25. In addition, tennis tickets are also available, £33 for one year, £11.50 for two months and £7.50 for one month. This entitles you to unlimited one hourly sessions subject to the availability of the court.

**Barbara Russell  
Clerk to the Council  
6 The Grove  
Pembury 823193**

### Cllr. Betty Roberts writes:

The growing season is with us again, but unfortunately it's not only the things we plant deliberately that grow. Our groundsmen will again tackle the Japanese knotweed that is coming through on the allotment site and will do their best to control the weeds on the vacant plots. Allotment holders are asked to keep down the weeds on their plots, even if they are not cultivating the whole area.

A number of empty lager bottles have been found lying around in the Lower Green burial ground and a seat has been removed from its fixings in the Upper Church burial ground. The burial grounds are not locked, but please remember that they are consecrated grounds and that they should be treated with respect.





25 High Street Pembury

Telephone 823878

Karen Errett BSc MBCO Ophthalmic Optician

- Friendly, professional service.
- Late night and Saturday morning testing.
- Contact lens fitting, solutions & accessories.
- Over 300 frames on display.
- Glaucoma screening.

**OPENING TIMES** Monday, Tuesday and Friday 9.00am-5.00pm  
Thursday 9.00am-8.00pm Saturday 9.00am-1.00pm  
(Closed for lunch 1.00pm-1.40pm and all day Wednesday)

## Burtons Pembury's Solicitors

Penn House  
13a High Street  
Pembury

Tel Pembury 824577

## YOUR REPRESENTATIVES

### County Council

Derek Hawkes Richards, Hop Press Oast, Mascalls Court Road, Paddock Wood.  
Tel: 834692

### Borough Council

Mrs Sylvia Abbott, 18 Lower Green Road. Tel: 924031  
Mr Terry Cload, 56 Herons Way. Tel: 823966  
Mrs Hildy Swinden, 6 Church Road. Tel: 823378

### Parish Council

Mr Ron Abbott, 18 Lower Green Road. Tel: 824031  
Mr Hugh Boorman, 52 Henwood Green Rd. Tel: 823068 *Chairman Planning Committee*  
Mr Terry Cload, 56 Herons Way. Tel: 823966  
Mr David Coleman, 22 Ridgeway. Tel: 823402 *Chairman of Parish Council*  
Mr Derek Goodwin, 27 Greenleas. Tel: 823822 *Chairman Amenities Committee*  
Mr Philip Horn, 6 Sandhurst Avenue. Tel: 824720  
Mr Kit Kelly, 22 Hastings Road.  
Mr Dick Miles, Fletchers Farm, Hastings Road. Tel: 822378  
Mr Henry Plant, 16 The Coppice. Tel: 823459 *Vice Chairman of Parish Council, Chairman Public Relations Committee*  
Mrs Betty Roberts, 16 Woodhill Park. Tel: 824914 *Chairman Burial & Allotments Committee*  
Mr Bob Wilkes, 6 Belfield Road. Tel: 823264 *Chairman Environmental Committee*  
Mr James Wiltshire, 4 Henwood Mount. Tel: 824574 *Chairman Highways Committee*

## Brian V Toogood



DOMESTIC & COMMERCIAL CARPETS & VINYL  
SUPPLIED & FITTED



*Stain protection treatment for carpets*

OVER 28 YEARS' experience. EST 1977  
Any make of carpet available  
Pattern books brought to your home.  
Carpets dry cleaned  
Carpets adapted and repaired

FOR PERSONAL & PROFESSIONAL SERVICE **TEL: PEMBURY 824252**



*Aaron  
Flowers*



AARON FLOWERS  
124 Henwood Green Road • Pembury  
Kent TN2 4LN  
TEL: 0892 822721/822424

OFFICE FLOWERS & PLANT  
CONTRACTS, WEDDINGS,  
FUNERAL TRIBUTES, FLORAL  
& PLANT ARRANGEMENTS  
INCLUDING FRUIT BASKETS.  
SILK & DRIED FLOWERS.  
BOTTLE GARDENS.

INTERFLORA BY CREDIT CARD



## VILLAGE ORGANISATIONS

**ACCESS FOR THE DISABLED COMMITTEE**  
Local Representative Mrs J. Peckham. Tel: 824132

**AGE CONCERN**  
Mrs Josephine Darville. Tel: T.W. 522591

**ALZHEIMERS DISEASE SOCIETY**  
Simon Rooksby, Pineview Day Hospital, Pembury Hospital. Tel: 823535 Ext 3515

**ASSOCIATION OF PEMBURY FOOTBALL CLUBS**  
J. Smith, 18 Westway. Tel: 823714

**BEAVERS, CUBS AND SCOUTS**  
Peter Brookes, 8 Concorde Close, Paddock Wood. Tel: PW 833662

**BOWLS CLUB**  
Secretary: S. G. Roberts, 16 Woodhill Park. Tel: 824914

**BROWNIES GUIDER**  
Mrs Jones, 14 Lower Green Road. Tel: 823747

**BURMA STAR ASSOCIATION**  
Secretary: Mr R. G. G. Whitlock, 6 The Forstal. Tel: 822115

**CAMDEN GREEN BADMINTON CLUB**  
R. Holt, 50 Ridgeway. Tel: 823830

**CATHOLIC CHURCH**  
Rev. Geoffrey Pointer, The Presbytery, 11 Alliance Way, Paddock Wood. Tel: PW 833699

**COMPAID TRUST**  
Computer Aid for Disabled People. Tel: 824060  
Transport for Special Needs. Tel: 823488

**CONSERVATIVE PARTY**  
Terry Cload, 56 Heron's Way. Tel: 823966

**CRICKET CLUB**  
Secretary: Richard Crouch, 17 Highfield Close, Pembury. Tel: 823164

**DARBY & JOAN CLUB**  
Mr C. J. Eason, 183 Hastings Road. Tel: 824673

**FRIENDS OF PEMBURY HOSPITAL**  
c/o Pembury Hospital. Tel: 823535

**FRIENDS OF PEMBURY PARISH CHURCH**  
Secretary: Mrs A. Toler, Pembury Hall Cottage, Old Church Road. Tel: 824071

**GUIDE GUIDERS**  
1st Pembury Company: Mrs A. Baker, 67A High St. Tel: 824441  
3rd Pembury Company: Mrs J. Lakeland, 7 Greenleas. Tel: 824916

**HOCKEY CLUB**  
James Whitehorn. Tel: 824854

**HORTICULTURAL SOCIETY**  
Mrs D. Parfitt, 51 Church Road. Tel: 822909

**JUNIOR FOOTBALL CLUB**  
L. Frowde, 5- Herons Way. Tel: 822826

**KENT COLLEGE**  
Headmistress: Miss Barbara Crompton. Tel: 822006

**KENTISH VALE ROUND TABLE**  
Mr Everden. Tel: Paddock Wood 834685 or Paddock Wood 832823 (business)

**KENTISH VALE LADIES' CIRCLE**  
Mrs Wendy Kingcome, 11 Fellows Way, Hildenborough. Tel: H'boro (0732) 833403

**KING WILLIAM IV FOOTBALL CLUB**  
Mr M. Lefevre, 29 Willow Cres., Five Oak Green. Tel: Paddock Wood 832165

**LABOUR PARTY**  
Kevin Barden, 24 Beagles Wood Road. Tel: 824708

**LADIES' NETBALL CLUB**  
Mrs M. Walker, 65 Belfield Road. Tel: 823439

**LARKFIELD HALL**  
Principal: A. James, Cornford Lane. Tel: 822168

**LAWN TENNIS CLUB**  
Mrs S. Smith, 2 Ridgeway. Tel: 822405

**LIBERAL DEMOCRAT PARTY**  
Mrs H. Swinden, 6 Church Road. Tel: 823378

**MUMS AND TINY TOTS CLUB**  
Mrs S. Lathbury, 106 Ridgeway. Tel: 824532

**OUTGROWN CHILDREN'S WEAR**  
Mrs J. Fuller, 28 Henwoods Mound. Tel: 824079

**PEMBURY BUSINESS ASSOCIATION**  
T. P. Burton, 13a High Street. Tel: 824577

**PEMBURY FOOTBALL CLUB**  
L. Frowde, Hawkwell House, Maidstone Road. Tel: 822826

**PEMBURY FOOTPATH WALKERS**  
N. & K. Franklin, 11 The Meadow. Tel: 823212

**PEMBURY FREE CHURCH**  
Rev. David Graham. Tel: 824917

**PEMBURY FREE CHURCH PLAYGROUP**  
Mrs Alison Burgess. Tel: Tunbridge Wells 515714

**PEMBURY FRIENDS OF SEVEN SPRINGS**  
Mrs Durant, 39 Lower Green Road. Tel: 822196

**PEMBURY LADIES' SOCIAL GROUP**  
Mrs C. Segens. Tel: 823946

**PEMBURY UPPER AND PARISH CHURCH**  
Rev. Jim Brasier. Tel: 824761

**PEMBURY PLAYERS**  
Chairman: J. Norman Draper. Tel: 823975

**PEMBURY PLAY GROUP**  
Mrs J. Brough, 2 Cornford Park. Tel: 824208

**PEMBURY PRIMARY SCHOOL**  
Headmaster: Mr R. Nisbet, Lower Green Road. Tel: 822259

**PEMBURY ROVERS FOOTBALL CLUB**  
P. Craxton, 31 Batchelors. Tel: 823928

**PEMBURY SCHOOL HOUSE NURSERY**  
Teacher in charge: Mrs P. Hembury. Tel: 822259 (daytime). Hildenborough 833610 (evenings)

**PEMBURY SEQUENCE DANCE CLUB**  
Secretary: Mr Bob Greatrex. Tel: 822669

**PEMBURY SHORT MAT BOWLING CLUB**  
Mr E. Ruddell, Chiringa, Pembury Grange. Tel: 824498

**PEMBURY SOCIETY**  
R. Abbott, 18 Lower Green Road. Tel: 824031

**PRIMARY SCHOOL ASSOCIATION**  
Secretary: E. Fiddimore. Tel: TW 518277  
A. Mason. Tel: 823052

**ROYAL BRITISH LEGION**  
J. Young, 13 Bulls Place.

**ROYAL NATIONAL LIFEBOAT INSTITUTION**  
W. H. Dee, 1a Woodhill Park. Tel: 823131

**SANDRA'S HOUSE**  
Pre-School Nursery. Mrs S. Toogood  
Queens Folly, 64 Lower Green Road. Tel: 824252

**SCOUT AND GUIDE HQ MANAGEMENT TEAM**  
P. and J. Boorman. Tel: 822355

**TUNBRIDGE WELLS & DISTRICT VICTIM SUPPORT SCHEME**  
Tel: 513969

**VENTURE SCOUTS**  
Bernie Roberts, 13 Camden Avenue. Tel: 822932

**VILLAGE HALL**  
Manager (bookings): Denis Dawes, 29 Greenleas. Tel: 822411

**WOMEN'S INSTITUTES**  
Afternoon: Mrs Eileen Watson, Oak Cottage, Romford Road. Tel: 822607  
Evening: Mrs Elizabeth Belchamber. Tel: 824969

**WRVS**  
Mrs H. Swinden, 6 Church Road. Tel: 823378

**YMCA**  
Capt. Tony Pearson, Pembury YMCA. Tel: 823330

## FOR YOUR DIARY

- JULY**
- 1 Evening WI: Talk on black and white photography by Peter Greenwood, Village Hall 7.45pm.
  - 2 Pembury Footpath Walkers: walk starting from Stonecourt Lane 2.15pm.
  - 5 Darby and Joan Club: Poems recited by Mrs Brearley, Village Hall 2-4.30pm
  - 7 Afternoon WI: "Romney Marsh and its Churches", talk by Mrs B. P. Prestage, Village Hall 2.15pm.
  - 9 Horticultural Society: Summer Show, Village Hall 2.30pm.
  - 11 Horticultural Society: Floral Art Group, Village hall 8pm.
  - 18 Parish Council Meeting, Village Hall 8pm.
  - 19 Darby and Joan Club: Seaside outing, leaving Sunhill 10am.
- AUG**
- 2 Darby and Joan Club: meeting Village Hall, 2-4.30pm
  - 4 Afternoon WI: "Yes, we have no bananas" - memories recalled by Mrs Anna Milford, Village Hall 2.15pm.
  - 5 Evening WI: Members' evening, Village Hall 7.45pm.
  - 6 Pembury Footpath Walkers: walk starting from the Camden car park, 2.15pm.
  - 8 Horticultural Society: Floral Art Group, Village Hall 8pm.
  - 12 Darby and Joan Club: meeting Village Hall, 2-4.30pm.
  - 30 Darby and Joan Club: meeting Village Hall, 2-4.30pm.
- SEPT**
- 1 Afternoon WI: Mrs Elizabeth Dodds will talk on "Rio and its festivities", Village Hall 2.15pm.
  - 2 Evening WI: A talk on badgers by Mr M. Sage, Village Hall 7.45pm.
  - 3 Pembury Footpath Walkers: walk starting from Bo-Beep Corner 2.15pm.
  - 5 Parish Council Meeting, Village Hall 8pm.
  - 10 Horticultural Society: Autumn Show, Village Hall 2.30pm.
  - 12 Horticultural Society: Floral Art Group, Village Hall 8pm.
  - 13 Darby and Joan Club: outing, departing from Sunhill 1pm.
  - 22 Horticultural Society: talk on pruning by Mr Hilary Newman, Village Hall 8pm.
  - 26 Parish Council Meeting, Village Hall 8pm.
  - 27 Darby and Joan Club: Mr Higbee plays his guitar, Village Hall 2-4.30pm.

## ST. PETER'S CHURCH SERVICES

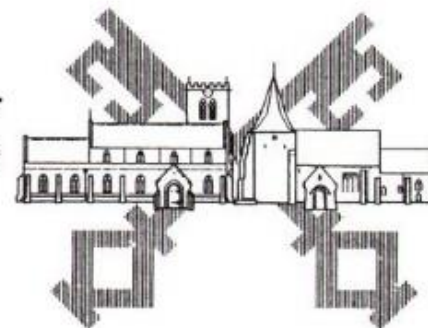
### Upper Church

- 8.00am Holy Communion**  
**9.45am The Parish Eucharist and Junior Church**  
**10.00am Holy Communion (Wednesdays)**

### Old Church

- 11.30am Matins (except first Sunday, Holy Communion)**

Evening services as advertised on Church noticeboards.



Every Friday - Pembury Village Market - Village Hall 9.45 - 11.15am  
Every Monday - Pembury Sequence Dance Club - Catholic Hall 7.45-10.15pm