

# DO YOU LIVE IN ANY OF THESE AREAS?

- WOODHILL PARK
- HASTINGS ROAD
- MAIDSTONE ROAD
- LOWER GREEN ROAD
- ROMFORD ROAD
- THE COPPICE
- RIDGEWAY
- WESTWAY
- HERONS WAY
- CHURCH ROAD
- THE GROVE
- THE MEADOW
- GIMBLE WAY



We have recently been successful in selling properties in these areas and consequently have many disappointed keen buyers for a home like yours.

If you live in any of these localities and would like us to help match a buyer to your home, please call the Pembury Office on 825355 and speak to Carol, Simon or Pauline.



# PEMBURY VILLAGE NEWS

Issue 87 / Autumn 1996



## PEMBURY PARISH COUNCIL'S MILLENNIUM PROJECTS

### Contents

Britain in Bloom	22
Church Times	30
Comment	2
For Your Diary	27
Friends of Pembury Parish Church	15
Gardens in Miniature	9
Gill's Garden	4
Hospice in the Weald	15
New Pembury Village Fayre	5
Parish Council Quiz	9
Parish Walks	20
Pembury Parish Council's Millennium Projects	3
Pembury Garden Tour	11
Pembury Horticultural Society	19
Pembury in Bloom	23
Pembury in the Past	
- Old Village Yarns	17
- The Cloth Industry	16
- Who Can Remember?	16
Pembury Society	19
Police Update	20
Profile	6
St. Peter's Photographic Club	11
Sport in the Village	
- Badminton	13
- Bowls Club	12
- Cricket Club	12
- Football Club	13
To the Younger Generation	9
Vandalism	22
Village Organisations	29
Your Clerk Reports	24
Your Councillors' Surgeries	24
Your Representatives	30

## Comment

As you will be aware, at the time of the Local Plan inquiry the future use of the Woodgate site was discussed in detail. The Local Plan has now been adopted and the area has been designated for Park and Ride, a small Supermarket and a Village Community Building.

This site was discussed again at a meeting held by the Borough Council in the Village Hall last July. It is the policy of the Borough Council to hold public meetings in the villages and in Tunbridge Wells to discuss Borough policy as it affects the ratepayers. We are all

local ratepayers and if we have concerns or questions they can be raised not only at these Public Meetings but at Parish Council meetings which are held at three weekly intervals.

We all need to be involved in the future development of the village - why not come to a Parish Council meeting and meet your Parish and Borough Councillors?

**Sarah Clarke**  
Chairman  
Pembury Parish Council.

If you picked up this magazine from the Library or one of Pembury's shops and are a Pembury resident, would you like a copy delivered to your door each quarter? If so, please contact the Editor or a member of the Editorial Committee who will be pleased to arrange it from our next issue.

### Editorial Committee:

Henry Plant (Chairman), Patrick Gillan, Kit Kelly, Gill Matthews and Betty Roberts

### COPY FOR NEXT ISSUE

Any news items or articles for possible inclusion in the next issue of this Magazine must be forwarded to the Editor before 20th October 1996.

## PEMBURY VILLAGE NEWS

EDITOR  
Henry Plant  
16 The Coppice  
Tel: 823459

Pembury Village News is published four times a year by the Parish Council, but the views expressed in the magazine do not necessarily represent official council opinion or policy. Typeset and printed by Rapido 91 Limited, Tunbridge Wells.

## Pembury Parish Council's MILLENNIUM PROJECTS

THERE has been much mention in the press of the Millennium and, in particular, we have all heard about the Millennium Fund. It seems strange in 1996 to be thinking about how to celebrate the arrival of the year 2000 and how to mark the Millennium permanently for everyone. The Parish Council is discussing at the moment



how best Pembury should celebrate the Millennium whether by a function or a number of functions to be held within the village - any comments or ideas with regard to this would be welcome. If you have any thoughts please contact the Parish Clerk and these will be discussed at the meetings of the Parish Council over the next few months. If you would like to offer any positive suggestions for events during public sessions at any Parish Council meetings or wish to ask any questions on this project you will be most welcome. Parish Council Meeting dates are set out on *For your Diary* page of this magazine.

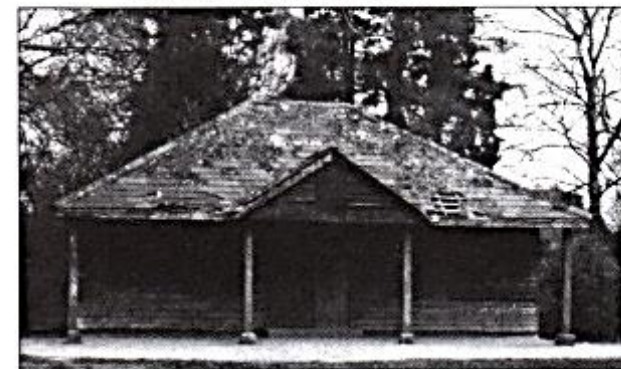
The Parish Council has, however, decided that it should do something for the long term benefit of the village as a whole as its Millennium project and two separate projects will be undertaken. The Village Hall became the property of the Parish Council some years ago having been built by public subscription through the auspices of the Royal British Legion. The Hall is in urgent need of renovation and repair and the Parish Council has therefore agreed to instruct an architect to prepare plans for its complete renovation and renewal subject to planning

permission being granted. Until such time as the costings for this are prepared it is not known whether applications for grants will be made to the Local Authorities or to the Millennium Fund but it is hoped that the funds for this project will be available from one source or another.

Most of the village organisations use the facilities of the Village Hall and it is for this reason that the Parish Council has decided that the modernisation of the building is essential. It is thus hoped that the work will be undertaken and completed in time for the Millennium.

The second part of the Parish Council's Millennium project is, by necessity, much smaller. There have been a number of complaints over the past years about vandalism in the Recreation Ground, particularly to

the building which is popularly known as the Hockey Pavilion. This also is in need of urgent attention and there are consultations with the local youth groups with a view to providing a completely new pavilion in the Lower Green Recreation Ground for the use of sporting groups generally and, in particular, any re-formed



Hockey Club, Junior Football Clubs and possibly the Tennis Club.

We all hope as a Parish Council that these projects will be fully supported by the parishioners of Pembury with a view to providing urgently needed facilities for the future benefit of the village.



## GILL'S GARDEN

AUTUMN is the time to plant small shrubs, e.g. crocus, daffodils and chinodoxa; generally the earlier they are planted the earlier they bloom. Bulbs should be planted to a depth to equal twice their own width in the soil. All will be happy to grow through either pansies, polyanthus or even heathers. Heathers make a welcome splash of colour throughout the year. The winter flowering heathers are usually lime tolerant while the summer varieties need a lime free soil to survive. They look lovely in beds in the garden with slow growing conifers or can be used in troughs or hanging baskets but if in the shelter of the house do remember to water them regularly.

New lawns can be sown before mid-September while the ground is still warm and will establish before winter. The grass may be cut when two inches high to reduce by half, providing the ground is not wet or frosted. Remove leaves from existing lawns and, after aerating, give an Autumn fertiliser.

Geraniums, fuchsias, gladioli and dahlias should be lifted and kept frost free. Summer annuals should be removed and the ground dug and composted before planting winter flowering plants, e.g. pansies, polyanthus, stocks, wallflowers and tulips.

Gill Matthews

## THE NEW VILLAGE FAYRE

THE New Pembury Village Fayre held on Saturday 13th July was a resounding success. A joint venture between Pembury Athletic Football Club and the Scouts and Guides and sponsored by Pembury Parish Council, the Fayre offered a new look on an old theme. Of course, the weather helped immensely for the sun shone throughout the day, a feat rarely achieved on Fete Day!

There could so easily have been no Village Fete this year, following concerns expressed by the Scouts and Guide movement regarding the lack of volunteer help available. On the suggestion of the Parish Council a joint committee of representatives of each organisation was formed and organising began in February, co-ordinated by the Parish Council.

Laurie Frowde and Keith Mearing, the Pembury Athletic representatives, gave the organising committees a new injection of enthusiasm: the willingness shown by them to help organise, cajole, press gang and threaten volunteers into helping and organising events on the day was a delight to watch.

Peter Brookes, the Group Scout Leader, shouldered the responsibility of organising and obtaining manpower to help set up the marquees on the day. The professionalism shown by the Scout volunteers on the day was breath-taking.

Gill Palmer, one of the Guide representatives, offered to act as treasurer as she has so much experience in this department.

Janet Ditchett, the other Guide representative, looked after the raffle and also provided a convenient outlet for the sale of T-shirts, raffle tickets, programmes and publicity from her chemists shop in the High Street.

Among the new attractions this year was a Craft Fair, which took pride of place in the centre of the Recreation Ground and the Horticultural Society held its Summer Show in the Scout Headquarters, a gesture designed to make the Fayre a real village affair.

The Committee would like to extend a special thanks to the following people for their invaluable help and successful attractions.

Peter Speaight, who ran the Bar-b-que, raised £220 which he donated to the Village Fayre funds. Gary Coldwell ran the Beer Tent, Mark Boorman ran the Tug of War competition, The Pantry provided cakes for sale on the Cake Stall, Miss Sarah Wilson of the Amberside Dance Studio provided the dancing girls, Veronica Constantine of the Vale Royal Hotel provided the fantastic "Guess the Weight" cake, the tables and chairs for the beer tent, numerous other items and also ran the Balloon Race in between, Robin Turner and the boys in the band provided musical entertainment throughout the afternoon and Pembury Evening WI ran the Tea Tent.

There were many village organisations in attendance as well as many businesses who had supported the programme by advertising, such as the Honda Garage who also provided a display and competition.

The afternoon gave the opportunity for people to put something back into the community - Pembury needs to unite - to become a more closely knit community - to shake off the 'Tunbridge Wells suburb' label and establish its own identity. The Fayre provides such a chance - let us build on this summer's foundations next year.

*Thanks must go to all of you who attended in such large numbers - it made it a truly memorable afternoon! Tell a neighbour or friend and we'll see you all again next year.*

Paul Russell



Veronica Constantine and some of the players from Pembury Athletic on the Balloon Race stall at the Village Fayre.

## Profile

Dr Nina Welch

Nina and her husband Tim have lived in Pembury for 2 years. As one of our local doctors Nina has made a commitment to serve the residents of this village. She and Tim intend to settle here for some years and bring up their family. Nina told me that although she originally intended to specialise in hospital work she now loves the variety of work as a G.P. and the long term relationships established with local families.

Nina and Tim were both brought up in Bromley. Nina was determined to study medicine even at the early age of 10 when she was already concerned about the needs of people in the Third World. She would have liked to have trained as a missionary doctor and may consider this possibility in the future. Until she started her medical training she was a very keen Girl Guide. After her medical course at St. Georges Hospital, in London, Nina and Tim were married and 7 years ago they went to live in Aldershot where she finished her training. She liked the atmosphere of hospital life and especially enjoyed working with children but decided that working as a General Practitioner would suit her best.

Her brother is mentally handicapped which made her aware of the problems of the disabled. She is a good swimmer and is qualified to teach the disabled to swim.

Nina says, "I am happy working in Pembury, my partners are very supportive and we have an excellent working relationship. A General Practitioner needs to be compassionate, understanding and dedicated. I believe that if you really want to make something special of your life you can achieve it if you try hard. I wanted to help people by qualifying as a doctor. Working as a doctor part-time I feel



Dr Nina Welch with her husband and children

fulfilled in my job and I also have time for my family".

Nina has two small boys - Jack, aged 3, and Matthew, born 5 months ago. The family are practising Christians, and are members of the Pembury Free Church. Tim is a horticulturist, specialising in trees and shrubs. Nina still swims regularly; the family also like walking, visiting places of interest and holidays abroad. Greece is their favourite destination; they love Greek food. Since moving to Pembury they have enjoyed DIY, spending a lot of time decorating their new home where they like to relax and entertain their friends.

We are fortunate to have Nina as one of our local doctors. She enjoys her work with her patients, she listens to their problems and uses her varied training and experiences to help solve their difficulties.

Sylvia Abbott

PICK  
•  
YOUR  
•  
OWN  
&  
READY  
PICKED  
FRUIT



Maidstone Rd, Pembury  
Pembury 824569

STRAWBERRIES & RASPBERRIES  
LOGANBERRIES & TAYBERRIES  
GOOSEBERRIES & REDCURRANTS  
BLACKCURRANTS & BLACKBERRIES  
PLUMS & CHERRIES  
APPLES & PEARS

Also PIPPINS VINTAGE KENT CIDER  
June-October: See local press for details



Sarah L. Wilson, A.R.A.D., A.I.S.T.D.

BALLET, MODERN, TAP, JAZZ, ADULT KEEP FIT

ALL GRADES & ISTD EXAMINATIONS

Special Pre-School Classes

Telephone: (01959) 562329



Home Improvements - Extensions - Free Estimates

# ALAN CLARKE

BUILDERS & DECORATORS

Tel: Pembury 823932



# PBSS

Pembury Business & Secretarial Services<sup>SM</sup>

CVs  
Translations  
Word processing  
Mailshots & mailing address  
Business & personal stationery  
Book-keeping & credit control  
Personalised wedding stationery



Tel: 01892 824068/824938  
Fax: 01892 825134

## WALROND & CO

CHARTERED SURVEYORS

01892 511899

STRUCTURAL SURVEYS :: VALUATIONS  
AND ALL PROPERTY ADVICE

## CHIROPODY SERVICE HOME VISITS ONLY

Mrs C. M. Bathurst MBChA MSSCh  
Tel: Pembury 822398

### To the younger generation . . .

. . . There's nothing to do!  
. . . There's nowhere to go!  
. . . Pembury's boring!

We, as Parish Councillors, can understand your comments. We may not agree but we

can understand.

**So, what do you want to do?**

Write to the Editor with your ideas and, providing they are sensible suggestions, we'll see what can be done.

### GARDENS IN MINIATURE

THIS COMPETITION, held on Village Fayre Day in July in the Parish Council marquee, attracted some 12 entries. The winner of the 4-7 year group was Laura Spink aged 7½ years. The judge awarded joint first place in the 8-11 year group to Holly Fordham (aged 8 years) and Kirsty Presnell (aged 9 years).



### PARISH COUNCIL QUIZ

THE holidays are over – the nights are drawing in – and you're bored! So what better way of waking up those brain cells than taking part in the Quiz on 14th November. Teams of 4 people, £5 per team, booked on a 'first come, first served' basis.

The winning team will nominate which charity or organisation within the parish, that will benefit the parishioners or the parish of Pembury, is to receive all profits from the evening.

Application forms are available from: Betty Roberts, 16 Woodhill Park, Pembury. Tel: 824914

### Madeleine Townsend and Co. Solicitor



\*\* PERSONAL INJURY CLAIMS \*\*  
\*\* MATRIMONIAL AND FAMILY \*\*  
\*\* CONTRACT AND EMPLOYMENT \*\*

ASK FOR FREE FIRST INTERVIEW  
PHONE 01892 515284



A QUALITY SERVICE  
Approved by the Legal Aid Board

Justin House, 46A High Street, Tunbridge Wells, Kent TN1 1XF

### JILL NOAKES DRESSMAKER

Pippins Farm, Pembury

We offer a comprehensive and professional service in all forms of curtain making, tie backs and valances. Dressmaking is carried out to a high standard and we specialise in wedding gowns made to your designs. Full alteration service.

Pembury 823299 or 824260



## STURGEON'S OF PEMBURY

Specialists in all types of Road and Drive Construction  
Coal Merchants • Haulage Contractors

Henwood Green, Pembury. Tel: 822221/2/3

### JULIE T. ROBINSON

Professional Beauty Therapist



FULL RANGE OF PROFESSIONAL BEAUTY TREATMENTS AVAILABLE  
WITHIN COMFORTABLE AND PRIVATE SURROUNDINGS



SPECIALISED DERMALOGICA FACIALS \* ELECTROLYSIS \* MANICURES/PEDICURES  
WAXING \* BRIDAL/SPECIAL OCCASION MAKE-UP \* TOP-TO-TOE TREATMENTS

Products do not contain artificial fragrance and are cruelty free.

Please telephone for a list of treatment details. PEMBURY (01892) 824059

### ST. PETER'S PHOTOGRAPHIC CLUB

THE founder member of this small club, which began in 1994, was Reverend Jim Brasier, whose excellent photographs recording church artefacts will always be remembered.

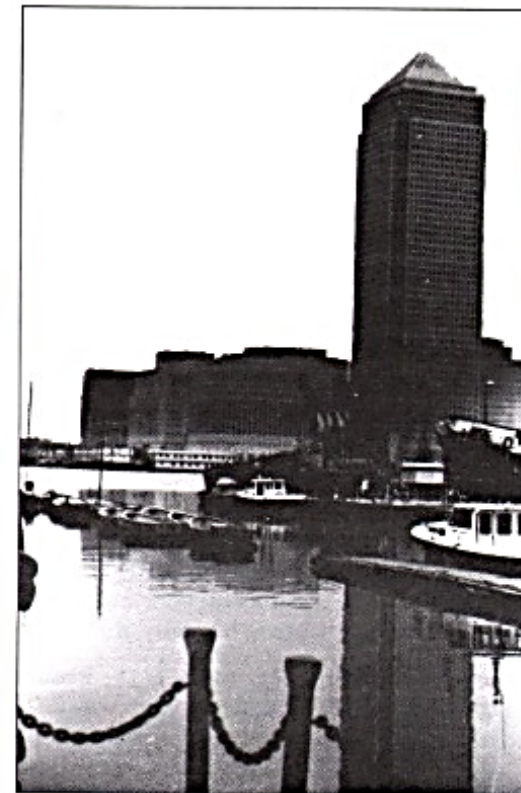
It is a friendly club, catering for the novice or the experienced photographer. It offers practical indoor and outdoor sessions, as well as the usual competitions and summer outings.

The picture is one of a series taken by Mike Carr on a recent trip to the Docklands where we all enjoyed a hearty breakfast that has now become something of a tradition!

If you own a camera and have an interest in photography you can join our Club by calling the secretary, Carole Brewer, on 822030.

We meet at Saint Peter's Church, in the Upper Room, on the second and fourth Monday of each month at 8 pm starting from 23rd September.

Carole Brewer



### PEMBURY GARDEN TOUR

The Pembury Garden Tour was held on Sunday 7th July in aid of Saint Peter's Church. We were fortunate with the weather and were very pleased to have over 70 visitors, some of whom had journeyed a long distance to see the gardens.

Each visitor was given a pass and a tour map, together with the description of the gardens that could be identified by a large "daisy" logo. The owners are to be commended for their hard work, demonstrated by the high standard of the gardens.

Teas were available and, although there

was no charge, people gave generous donations. In addition, funds were raised by the sale of hanging baskets and plants. I was particularly delighted with the positive responses from everyone concerned as this was the first Garden Tour I had ever organised.

Many people have said that they hope the tour will be repeated next year and five new gardens have been offered for viewing. Therefore, it looks likely that this Garden Tour will become an annual event.

Carole Brewer  
Organiser



## SPORT IN THE VILLAGE

### PEMBURY BOWLS CLUB

The Club played host for the first time to an Inter-County Bowls Match between Kent and Sussex on 24th July last. The two games, one a singles and the other a pairs game, were part of a series of games between players representing the two Counties which have to be played on a neutral ground. The games were in one of the final rounds of the Ladies Over 55's Singles and Pairs Competition National Bowls Championship organised by the English Women's Bowling Association. The spectators saw an excellent game between Betty Douglas (Kent) and Doreen Hough (Sussex) in the singles with the Kent representative eventually winning 21 shots to 13. The pairs game resulted in another Kent win, Betty Green and Ellen West overcoming Gwen Webster and Margaret Norton by 25 shots to 11. The afternoon was rounded off by all the participants and their supporters sitting down to a high tea provided by the Club's ladies.

The allocation of the match by the English Women's Bowling Association to the Pembury Bowls Club is a reflection on how well the Club has maintained their Green since they took over its maintenance from the Parish Council, making it one of the best in the area.

A little piece of Club history was made last July when Elsie Storey (Lead) and Irene Plant (Skip) reached the Divisional Finals of the Kent County Ladies Pairs competition. Their opponents in the final, using their experience as members of the Kent County Ladies Team, ran out eventual winners but only after a hard fought match.

In an endeavour to piece together the history of the Club, some evidence has been obtained to substantiate that the Bowls Club was founded in 1929 when its home was on the Green adjoining the Camden Arms, Pembury. Some 20 years earlier a Club, then known as the Camden Bowls Club, had played on the same Green. Pembury Bowls Club moved down to their existing Green in the Recreation Ground which was constructed in 1934. This evidence has been obtained from the archives of the *Advertiser* and *Kent and Sussex Courier*.

If there are any persons who were members of the Club in the early days right up to 1980's, the Secretary, George Roberts, would be pleased to hear from them on 824914 so that he can piece together details of the years between 1929 and the present day.

Henry Plant

### PEMBURY CRICKET CLUB

The Club enters the second half of their first year in the Kent Village League with the First XI midway in Division 1 and the second team in contention for the Division 2 championship. The new League venture has been reasonably successful with the first team not overwhelmed by the quality of the opposition – the standard of the wickets is not as good as the Mid-Kent League – although it must be said three of the seven matches have been played on wet wickets. The second team are generally too strong for their division – twice scoring over 300 runs in their 40 overs and 250 plus twice.

On the social side there has been a marked improvement with so many local sides providing the opposition.

The juniors, under the control of Robert Price, continue to thrive and are now playing competitive matches.

12

The Club batting record was broken by Colin Barden who scored 189 runs against Cranbrook. There have also been centuries by Chris Pugh, Tony Burgess and Adrian Bradford.

The First XI have reached the final of the Kent and Sussex Courier Shield for the second year running.

Peter Chandler



### BADMINTON

My name is Katie Thomsett. I play Badminton about three times a week and enjoy it very much. Badminton is a fun sport enjoyed by all ages and played at all standards. I played at the University of Kent recently representing Tunbridge Wells.

If you want to give it a try, look out for notices at local Sports Centres or contact Mike Platell (Tunbridge Wells Sports Development Officer) on 01892 514385.

### PEMBURY FOOTBALL CLUB

The 2nd June 1996 was a momentous day in the life of football in the village. The two senior football clubs merged from positions of strength to form an even stronger united club for senior football in the village. For many years the two clubs had been increasingly getting closer, what with sharing players, presentation dances, fund raising events, annual dinners etc. So much so that it became increasingly obvious that the next logical move would be to form a new Club to accommodate both. This was done and agreed at both of the Club's Annual General Meetings held on that date. The new Club is to be known as Pembury F.C. For administration purposes the Saturday teams will play under this name whilst the Sunday teams will play as Pembury F.C. Sunday. The elected officers are: Jim Smith – Chairman; Robin Turner – Vice-Chairman; Andy Rice-Tucker – Treasurer; Steve Waterman – Saturday Secretary; and Phil Craxton – Sunday Secretary.

Last season was another good one for all the teams as reported in the last issue of this magazine but all this success was to no avail as the first team was unable to clinch a place in The Nuclear Electric League – the next step up football's ladder of Leagues – due in part to the very poor condition of our pavilion at Woodside. It is hoped that with continued success on the pitch and the speedy resolution of the lease between the Pembury Parish Council and the Association of Pembury Football Clubs (which will enable an application to be made for Lottery funds so that the new pavilion can be built) that next year's application will be successful.

I think you will agree that last season was yet another the village can take a bit of pride in. We hope that next season is as enjoyable and successful.

Jim Smith

13

## Kempsters

### The Funeral Directors

Partners: BRIAN KEMPSTER Dip.F.D., M.B.I.E. & JESSICA KEMPSTER

A family business that has served the community in Kent and Sussex since 1882

A COMPLETE 24 HOUR FUNERAL SERVICE

OFFICE AND CHAPELS OF REST AT

2-4 ALBION ROAD • TUNBRIDGE WELLS

Telephone: 01892 523131



Be thoughtful, take out a GOLDEN CHARTER PRE-PAID FUNERAL PLAN



### DUSTBUSTERS HOUSE CLEANING SERVICES

The Red Cottage  
3 Romford Road  
Pembury  
Tel: Pembury 825324  
or 825362



Finding housework stressful?  
Let us take the strain!

- Fully insured
- References available
- All equipment and supplies provided at no extra cost
- Estimates available for Weekly, Bi-Weekly and Spring Cleans.

## BURSLEM MEMORIALS



A Family Business Since 1880  
TUNBRIDGE WELLS (01892) 526733

• Additional Inscriptions  
Renovation & Cleaning • Home Visits by appointment  
Courtesy Car to visit our Showroom available on request.

BENHALL MILL ROAD, TUNBRIDGE WELLS  
Opposite Crematorium

14

## FRIENDS OF PEMBURY PARISH CHURCH

The AGM will be held in the Upper Church of St. Peter on Monday 11th November 1996 at 8 pm.

There is to be a concert by Fioritura who are performing songs and arias at Kent College on Saturday 26th October 1996 at 7.30 pm in aid of the Friends of Pembury Parish Church's Restoration Appeal. Refreshments will be provided. Tickets

priced at £5 each will be available from mid-September from the Vicarage or by telephoning 824761.

The next Friends Coffee Morning will be on the Village Green on Saturday 7th September when there will be coffee, produce, cakes, books and other stalls. This event will be held in the Upper Church of St. Peter if the weather is not good.

## HOSPICE IN THE WEALD

HOSPICE Link Groups in towns and villages all over the area to be served are busy helping to raise the money needed to build, furnish and then run the new Hospice, but since it is to be sited in our village the Pembury Link feels a special responsibility. The Group, under the energetic leadership of Mrs Chris Cooper, has now set itself a specific target – to raise £30,000 to meet the full cost of building and equipping one of the single rooms for terminally ill patients. If this can be achieved it will be named The Pembury Room.

By mid-July, less than 15 months after its launch the Group was approaching the half-way point to this target, with £13,000 raised, thanks to the support of very many local people and firms. But with building at the site off Maidstone Road scheduled to start next spring another £17,000 needs to be raised in the Group's second year. Its members hope that every Pembury resident, every club and every business will want to feel they have been involved in the building of the Pembury Room. There are many ways to participate – by supporting Link Group fundraising events or organising your own event; by buying (and inscribing) a brick to be used in the Hospice building for £5; or a sunflower badge for £1; by simply making a direct donation; by giving items for the bric-a-brac stalls run by the Link Group at local fetes. Offers of practical as opposed to monetary help are also welcome. Some local firms and individuals have generously met all or part of the cost of some

past fundraising events and further offers of such sponsorship, donation of free goods or services or of prizes for raffles would be greatly appreciated.

Forthcoming events include a Country Fair at Pippins Farm, Maidstone Road on Saturday 5th October and a mammoth fundraising day in the Village Hall on Saturday October 19th: Jumble Sale in the morning – Tea Dance in the afternoon and a Karaoke evening! The Pembury Players hope to present another pantomime in January following the great success of last year's performances.

Proceeds from the new Hospice Shop in the High Street do not go directly to the Pembury Room: the trading terms under which all Hospice in the Weald's shops operate require profits to be put into the charity's general running fund. However, it is all for the same cause and the more money the shop can make the sooner the Hospice will be completed. The shop, which is run entirely by unpaid volunteers, also provides a centre for information about the Hospice and about Pembury Link Group activities but it has opened on a trial basis and its continuation must depend on enough local support. So please, drop in and see what is on offer and also tell friends living outside Pembury about it.

Contact with the Link Group can be made through the Hospice Shop or by telephoning 824805 or 824490.

15



# PEMBURY IN THE PAST

## THE CLOTH INDUSTRY IN PEMBURY (1500-1700)

During Tudor and Stuart times there were two important industries associated with the High Weald area of Kent and Sussex. One was the Iron Industry which never existed within Pembury parish. Although there were important works nearby in all the neighbouring parishes, including several sites in Dundale Road (which is in Lamberhurst and Frant Parishes) and at Cinderhill, Matfield (which is in Brencley Parish). The other industry was the Cloth Industry which flourished in Pembury and in the more famous centres of Cranbrook and Goudhurst.

Written evidence earlier than the reign of Elizabeth I is difficult to find but in 1535 John Polley, a weaver, died and was of sufficient social status to leave a will. (He was, incidentally, a relation of the martyr Margery Polley's husband.)

Continuing through the 16th century, three fullers (a fuller was a person who cleansed, shrunk and thickened cloth) and two clothiers are mentioned for criminal behaviour in the Quarter Session records. Two fullers were accused of highway robbery (with others) at Castle Hill and were indicted for burglary, grand larceny or theft. We can only assume that they were a small proportion of those employed in the industry as there is no reason to suppose that cloth workers were any less law abiding than the population as a whole. One other clothmaker left a will during this period and the two fullers mentioned above were, with two other friends, stated as being employed by one George Austen, a clothmaker. It is unlikely that these were his only employees.

During the period 1600-1660, two broadweavers were believed to be working in Pembury. (A broadweaver was a person who made finely woven woollen cloth.) One of them must have been Thomas Albourne who died in 1660. In 1651 he bought 60 acres at Kippings Cross which was a considerably larger holding than the average at this time, so he must have been quite wealthy.

When John Baldwin, a clothier, died in 1695 the inventory of his property included four broadcloths valued at £16 and two kerzies worth £5. Robert Driver, clothworker, was worth £341.3s.2d when he died in 1709. He lived at the house now known as Queens Folly, near the Royal Oak, which would have been a very considerable yeoman's residence.

Although Robert Driver's son, also Robert, was pursuing the trade of clothworker in 1710 that is the last time a specific reference is made to participation in the industry which was by then in severe decline throughout the Weald. Perhaps the very coarse woollen cloth that was produced in this area (which was mostly destined for the London market) was no longer acceptable to an increasingly sophisticated population.

This, however, does not explain the fate of the linen weavers who were also working in the area throughout the period. We know that in 1573 an Alexander Blacke was indicted for stealing both woollen yarn (8lbs worth 8 shillings) and linen yarn (20lbs worth 20 shillings) and in 1703 Thomas Fry, linenweaver, died.

Kathryn Franklin

## WHO CAN REMEMBER . . .

. . . the events behind this picture and the *Kent and Sussex Courier's* newspaper report on the great fire in Pembury in the early fifties?

The Oast Houses used to be behind the off-licence at the corner of Romford Road. I can remember the Oast Houses and the fire although I am uncertain of the year - 1952-1953 perhaps? It seemed like the whole of the village had turned out that evening to watch the firemen in their efforts to put out the fire. It had been started accidentally by three or four local lads who had been playing with matches. I can also remember the villagers helping to save the crop of apples. I wonder how much those Oast Houses would have been worth now?

Hughie Boorman



Damage amounting to £6,000 was caused by fire at Beagles Wood Farm, Pembury, on Friday last week.

## 600 bushels of apples go in big oast house blaze

£6,000 DAMAGE AT PEMBURY

A FIVE-KILN oast house containing a valuable crop of apples was gutted by fire at Beagles Wood Farm, Romford Road, Pembury, on Friday. The centre bays were completely burnt out. Two kilns were destroyed and three badly damaged. The total damage has been estimated by Mr. J. C. Lamont, the farmer, as not less than £6,000.

### SAV WAS A FURNACE

The fire was first noticed by Mr. A. H. Dallimore, who lives in a nearby cottage, just after 3 p.m. He was getting some coal in when he saw smoke coming from the centre

bay. "Within five minutes the bay was a furnace. The wind got in and up she went," he told the *Courier*. Fire Brigades from Tunbridge Wells, Southborough and Maidstone were soon on the spot and fire fighting and salvage went on until the early hours of the morning. The building, which was a very fine specimen of its type, was very old and burnt like tinder. No sooner had the fire been subdued than it would flare up again.

### CROWD HELPED SALVAGE

While the building was alight a large crowd gathered and firemen saved many apples by getting children to carry the boxes to safety. A great number of the apples were saved. Mr. T. Richardson, farm manager, told the *Courier* that although the building contained 2,000 bushels of prize apples worth £2 a bushel and 3s for each box, only 600 bushels were irretrievably damaged.

A large quantity of packing materials was also damaged. The crop came from two acres of orchard and was described by Mr. Richardson as a crop of a lifetime. "The farmer has never had a better crop per acre, it is a sad thing that it has ended like this," he said.

### COLD STORE SAVED

A cold store containing 8,000 bushels of fruit was saved, although it is less than 20 yards from the oast house. A fireman was slightly injured by falling debris. The whole building will now have to be levelled as it is too far gone to rebuild. The farm was at one time a large hop farm.

## J. C. WOOD

PAINTER & DECORATOR  
Est. 1984

INTERIOR & EXTERIOR PAINTING • PAPER HANGING  
ALL HOUSE MAINTENANCE • GLAZING & WALL TILING  
NO JOB TOO SMALL

Telephone: Pembury 824877



## JW Services (Pembury)

MOBILE CAR REPAIRS AT HOME OR WORK  
• BREAKDOWN FACILITIES •

ALL makes of cars including Citroen & Diesels repaired and serviced. Full Service:  
4 CYLINDERS: £65 - 6 CYLINDERS: £75

SECONDHAND CARS BOUGHT AND SOLD (WITH OR WITHOUT MOT)  
MOBILE CAR PHONES SUPPLIED AND FITTED

PHONE JIMMY WEBB - 825212 (Home) - 0860 270293 (Mobile)

THE WILDSIDE TRUST at

## BADSELL PARK FARM

CRITTENDEN ROAD, MATFIELD, TONBRIDGE, KENT

2 1/2 miles north of Pembury off A228

Pet Area and Animal Park • Rare Breeds, Fancy Fowl, Young Animals to stroke • Tropical Butterfly and Ant House • Indoor Play Barn • Bouncy Castle • Outdoor Play Areas • Tractor, Pony, Horse and Cart Rides • PYO Fruit & Gift Shop • Nature Trails • Cafe • School Parties and Children's Birthday Parties

OPEN EVERY DAY from 16 March 1996, 10 am-5.30 pm

For special events and other information ring 837228/832549

The Wildside Trust is a registered charity dedicated to environmental education and helping socially, physically and learning disabled people.

## REFLEXOLOGY & CRANIO-SACRAL THERAPY

NATURAL APPROACHES TO HEALTH WHICH CAN HELP MANY PERSISTENT CONDITIONS AS WELL AS IMMEDIATE PROBLEMS including digestive, circulatory, stress, fatigue, injuries, aches and pains

ALICIA ARTHUR MAR, MCCST

Registered Qualified Member of the Association of Reflexology and College of Cranial-Sacral Therapy  
Telephone PEMBURY (01892) 824387 for treatment details without obligation

## PEMBURY HORTICULTURAL SOCIETY - Sounds grand, doesn't it?

In reality we are a gardening club for people ranging from those who just potter around, like me, to the more dedicated gardener.

The flower arranging section is better known as "Floral Art".

This year we were invited to hold our Summer Show in the village Scout and Guide H.Q. as part of the Village Fayre. Many people didn't know we existed and many more were very impressed with everything they saw.

There was a stunning display of sweetpeas, beautiful roses and other lovely flowers - the perfume greeted you as you entered. The flower arrangements were excellent too.

A variety of fruit and vegetables were on display and handicraft, home baked cakes and bread, jams, etc, even flowerpot men in the children's class.

Refreshments were served all afternoon with home made cakes to tempt the

tastebuds, all at very affordable prices. Cakes were also available to purchase.

At the end of the Show, after the prize giving, most of the produce was auctioned at bargain prices and the money raffle prizes were well worth winning. We would be pleased to think you would like to join us more often. There are three shows a year - the next is on 14th September in the Village Hall as usual. There are also coach outings and regular talks on various subjects are held on weekday evenings throughout the year. Flower arranging classes too. Membership costs a princely sum of £1.50 a year, 75 pence for senior citizens.

As a senior novice, I find the Club great fun. It's a good way of meeting people and it also helps in bringing the village together. If I can show a flower or two (with my tongue in my cheek!) - how about you? If you win a prize, as I did this year, it makes it even more worthwhile

Beryl Webb

## THE PEMBURY SOCIETY

THE Annual General Meeting of the Pembury Society will be held on Monday 28th October at 8 pm in the Village Hall, Pembury. Nominations for Officers and Committee Members should be submitted to the Secretary, Mrs M. Marshall, 54 Henwood Green Road, Pembury at least two weeks before the AGM. The consent of the nominee and a seconder should also be obtained.

The guest speaker will be Mr Robert Ogley. He is well known for his books on the hurricane in 1987 and Biggin on the Bump, about war time exploits of fighter pilots stationed at Biggin Hill Aerodrome during the Battle of Britain. All are welcome. There will be light refreshments during the interval.

Many of you will remember "Pembury: Our Village, Our Future" published by the Parish Council in 1990. The cover artwork and frontispiece, a delightfully witty poem entitled Pembury By-passed, were by James Holland OBE a Life Member of the Society. It was agreed that as a tribute to Jim, who died earlier this year, we should have the poem framed and hung in Pembury Library. This may now be viewed in the Library by courtesy of the Librarian, Mrs Jean Regali.

Ron Abbott



## PARISH WALKS

**EXERCISE TIME!** Dinner's over, washing-up done, had your forty winks. Right, boots on and off we go.

One of the best times of the year for walking; the leaves beginning to change colour, harvest being gathered and a mellowing of colours. Don't come back empty handed. Think of the free things that can be found and collected - blackberries and a few dropped apples, mushrooms, sloes for gin, elderberries for wine and so on.

Let's go for the big one. Round Romford Road, turn into Woodlands by the Priory - pick up Footpath 227, through the chestnut wood and join Footpath WT 226 - turn right and keep on through the wood, bearing left, over the stream and into the apple orchard. Join Footpath WT 248, turn right and follow it right on through the

Horse Pastures until you reach Little Hawkwell Farm and the main road. Cross the road with care and enter Footpath 208. Go down across the field and turn left onto Footpath 207. Follow on across the field until you reach Periwinkle Lane. Turn right then left into Redwings Lane. After about 600 yards turn left into the Orchard on Footpath 218 and follow that round and go over the By-pass Bridge into Downingbury Farm. Go round the edge of the strawberry field and eventually come out onto Church Road opposite Gimble Way. Then wearily trudge your way home.

Then make the blackberry and apple pie, sloe gin and elderberry wine and have the mushrooms for tea. Don't forget, the Clerks Office is eagerly awaiting your orders for footpath maps!

**Hughie Boorman**

## POLICE UPDATE

Since my last article there has been little or no direct response regarding Parish Constables and other matters of concern.

I hope that those who regularly read this article continue to do so. The crime in the area is proving to be seasonal and vehicular. There has been a substantial increase in the number of sheds and garages broken into. The main targets are, as in previous years, mowers, trimmers and other gardening tools. Who needs so many or are "We" buying them back via Boot Sales or small ads?

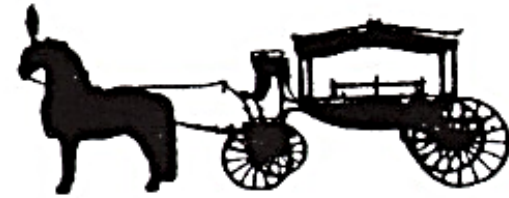
Owners are not helping by leaving their items easily accessible and properties inadequately secured. Please consider personally marking your items in a way that makes them unique and unattractive to the thief. Please also ensure that your sheds and outbuildings have good locks and, if your property is valuable, perhaps an alarm. It does help us if you also have the serial numbers together with make, model and colour. We recover a lot of items which we then cannot return to the owner.

The vehicle crimes are centred around Pembury, Matfield and East Peckham but could occur anywhere. There is a strong possibility that one of the stolen vehicles from East Peckham was used in the commission of breaks-in in Matfield before the vehicle was abandoned and another stolen nearby, which was left at Golden Green near Hadlow. Please secure your vehicles and take security measures such as window etching, alarms and immobilisers.

With all of these crimes no one has reported anything suspicious or heard or seen anything at the time. If anyone or anything is unusual or suspicious, report it immediately. If it turns out to be in order no one will mind. We prefer to attend "False Alarms" if there is a chance that we might catch an offender or prevent a crime.

Please keep us informed and we can inform you.

**P.C. 5609 Clive Bryant  
Community Officer**



## T. W. BOORMAN FUNERAL SERVICES

AT A TIME OF BEREAVEMENT YOU WILL NEED THE CARE, SENSITIVITY AND PROFESSIONALISM FOR WHICH WE ARE RENOWNED.

Own Floristry Department    Headstone and Memorials    Service Sheets produced  
No Charges for Last Respects    No Charges for Local Removals  
24 Hour Service

**Telephone (01892) 541070**

**31 Mount Ephraim, Tunbridge Wells, Kent TN4 8AA**

## G. F. GROVES

Your friendly local builder

CARPENTERS  
JOINERS

BUILDING  
CONTRACTORS

**EXTENSIONS/CONVERSIONS/NEW-BUILD**

PLANNING SERVICE AVAILABLE  
PURPOSE-MADE JOINERY

FREE ESTIMATES • FAST SERVICE

**Telephone (01892) 838619**

## VANDALISM

ONCE again there have been serious acts of mindless vandalism in the Village. This time the roof of the Woodside Football Pavilion and, more recently, damage to two seats and the Green of the Pembury Bowls Club.

What is worrying is the very poor response from the police, even after they had been given names and addresses of possible offenders within hours of the incident. Three weeks later and no action had been taken.

We appreciate that more serious crimes were being investigated but we always hear the same old story. We must always support the police in their fight against crime but I think we draw the short straw every time. If they are short on manpower it is up to them, through their chain of command, to demand more men. After all we pay quite heavily for a very poor service. We should not be expected to tolerate the unsociable behaviour of mindless youths without taking action. If we would all stop being so complacent collectively with determination we could easily deal with problem. Let's get organised and do it!

**A different era but still the same concern** - the undermentioned item was taken from a Courier news cutting in or around 1947:

*"VANDALISM" - "There must be many who regret the increasing vandalism that goes on in our beautiful woods and hedgerows. Every springtime, thousands of roots of primroses, cowslips, bluebells etc. are lifted by people who presumably transfer them to their gardens. They are not content to pick a handful of the blooms to decorate their tables and sideboards! The objectionable practice, which is stated to be growing, is not only an abuse of the privileges which the public enjoy of roaming freely in the lanes and wooded parts of many private estates but it is also an indictable offence. In some counties by-laws have been adopted to prevent this vandalism on the public highways, this being the case in Sussex. Doubtless it will be found necessary to enforce these bye-laws very severely if the rooting up of wild plants continues as it appears to have been doing this year."*

## BRITAIN IN BLOOM

Although the Parish Council did not win this competition a lot of valuable information was obtained. Firstly we need a committee to help undertake various tasks in the village so if anyone is interested please let the Editor know.

Our thanks go to Larkfield Hall, who helped by providing plants for the War Memorial as well as making the wooden signs for Coronation Garden and the Village Green.

## PEMBURY IN BLOOM

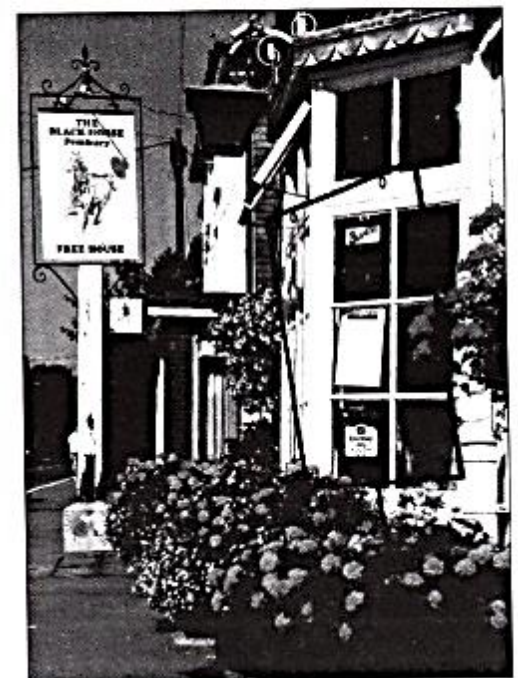
The results of the first Pembury in Bloom competition, jointly organised by the Pembury Parish Council and the sponsors, Notcutts, were announced at a special Tea Party for the finalists held at Notcutts Garden Centre, Pembury on 8th August last. Prizes and certificates were awarded to the following:

**The Notcutts Best Front Garden:** First Prize - Joan Richardson, Lower Green Road. Second Prize - Janet Davies, Henwood Green Road; and Third Prize - Robert Greatrex, High Street.



**Best Hanging Basket Category:** First Prize - Ann Toler, Old Church Road. Second Prize - Geoffrey Stafford, Greenleas; and Third Prize - Ernest Mackelden, Middlefield.

**The Notcutts Rose Bowl for the Most Attractive Commercial Frontage** was won this year by The Black Horse, High Street with Unwins Ltd, being Highly Commended.



Presenting the prizes and certificates, Mr Coggins, Notcutts Regional Manager, said "From the number and quality of entries, we clearly have some keen gardeners in Pembury. We look forward to working with the Parish Council for another successful competition next year".





## Your Clerk Reports . . .

IT HAS been another busy few months for the Parish Council. In May the Council purchased a new four-wheel drive vehicle for the groundsman in order to provide further flexibility. The Council have also been discussing major improvements to the Village Hall and the Recreation Ground Pavilion which are mentioned on Page 3 of this magazine.

Cemetery Lane, which runs down the side of the school to the Burial Ground, has been recently resurfaced by the Kent County Council which, together with the extensive repair works to the brick wall that runs along the lane, makes it now a safe access which is used almost every day by the infants attending Pembury School as well as numerous walkers.

Unfortunately, the summer months bring out late night revellers in the Recreation Ground and this year has been no different. Lack of litter bins, caused by vandalism by previous revellers, has resulted in copious amounts of litter, especially beer cans, being scattered over the Recreation Ground. Graffiti also seems to be a favourite pastime and most of the seats around the village bear their scars. Sadly some of these seats have been placed in certain areas to commemorate the lives of various village people. Desecrating the memory of a person is unacceptable behaviour and I ask that anybody witnessing such acts of vandalism report it immediately to the police. The Planning Committee have continued to be very busy recently attending a number of site meetings to help put forward constructive recommendations to the Borough Council on planning applications in Pembury.

Among other matters the Council has dealt with recently were presentations by Mr. Alan Goodwin of the West Kent YMCA, who spoke on the work of the YMCA in Pembury, and by Mrs Julie Austin of the Borough Council, on Dog Bylaws, litter and overgrown hedges along Rowley Hill. A number of Councillors took part in a litter pick throughout the village as part of the National Spring Clean week.

All in all, the pace never slackens - the parishioners of Pembury are well represented by their Parish Councillors who work extremely hard on their behalf trying to make Pembury a better place to live.

Barbara Russell

## Your Councillors' Surgeries

Borough Councillors Sylvia Abbott, Bruce Ballantine and David Mills and County Councillor Derek Hawes Richards hold a Surgery every first Saturday in the month in the Hall behind the Free Church in Romford Road from 10 am to 12 noon. Come along with your comments, enquiries and problems and they will do their best to help.

**Derek Hawes Richards** is Co-Chairman of the KCC Arts, Libraries and Sports Committee. He can also advise on Education, Social Services and Highways.

**Sylvia Abbott** is Chairman of the TWBC Housing Board and is also involved in environmental matters, public participation and the Citizens Advice Bureau.

**David Mills** is Chairman of the TWBC Planning Board, is on the Area Planning Committee and can help with Local Plan enquiries and planning applications.

**Bruce Ballantine** is an economic and financial expert; he can also advise on major Borough policy issues.

## ACCIDENT REPAIRS

- ★ VEHICLE REPAIRS
- ★ BODY/CHASSIS ALIGN
- ★ LOW BAKE OVEN

- ★ QUALITY FINISH
- ★ COLLECTION/DELIVERY
- ★ INSURANCE APPROVED



Appointed members:  
Guild of  
Master  
Craftsmen  
Established  
1958



# E. G. GREEN & SON

2 PETERSFIELD · PEMBURY

## PEMBURY 822992

Highly Commended by the National Association of Estate Agents

**DENISE BARNES**  
ESTATE AGENTS RESIDENTIAL LETTINGS



16 High Street, Pembury Tel: 01892 822880  
The Heath, Horsmonden Tel: 01892 724000

and PRESTIGE AND COUNTRY HOMES at  
Market Heath, Brenchley Tel: 01892 723922

Your INDEPENDENT Estate Agency for Personal, Experienced and Friendly service.  
FREE VALUATIONS - COMPETITIVE RATES - GOOD LOCAL KNOWLEDGE

## FOR YOUR DIARY

### OCTOBER

- 1 Darby and Joan Club: Lunch - Village Hall
- 3 Pembury Afternoon WI - Village Hall - 2.15pm
- 4 Pembury Evening WI: Clay Sprigs - Village Hall - 7.45pm
- 5 Pembury Footpath Walkers: Camden Car Park - 2.15pm
- 5 Hospice Link Group: Country Fair - Pippins Farm
- 7 Pembury Horticultural Society: Floral Art Meeting - Village Hall - 8pm
- 14 St. Peter's Photographic Club - Upper Church Room - 8pm.
- 14 Parish Council Meeting - Village Hall - 8pm
- 15 Darby and Joan Club: Sale of Work - Village Hall
- 19 Hospice Link Group: Fund Raising Day - Village Hall
- 24 Pembury Horticultural Society: Wines from the Garden - Village Hall - 8pm
- 26 Friends of Pembury Parish Church: Concert - Kent College - 7.30pm
- 28 St. Peter's Photographic Club - Upper Church Room - 8pm.
- 28 Pembury Society: Bob Ogley: Wartime Memories - Village Hall - 8pm
- 23 Darby and Joan Club - Village Hall - 2pm

### NOVEMBER

- 1 Pembury Evening WI: Annual General Meeting - Village Hall - 7.45pm
- 3 Pembury Footpath Walkers - Stonecourt Lane - 2pm
- 4 Parish Council Meeting - Village Hall - 8pm
- 7 Pembury Afternoon WI: Annual General Meeting - Village Hall - 2.15pm
- 11 Pembury Horticultural Society: Floral Art - Village Hall - 8pm
- 11 St. Peter's Photographic Club - Upper Church Room - 8pm.
- 11 Friends of Pembury Parish Church: Annual General Meeting - Upper Church of St. Peter - 8pm
- 12 Darby and Joan Club - Village Hall - 2pm
- 14 Parish Council Quiz - Village Hall - 8pm
- 18 Pembury Footpath Walkers: Annual General Meeting - Village Hall - 1pm
- 25 Parish Council Meeting - Village Hall - 8pm
- 25 St. Peter's Photographic Club - Upper Church Room - 8pm.
- 26 Darby and Joan Club - Village Hall - 2pm
- 28 Pembury Horticultural Society: Winter Garden - Village Hall - 8pm

### DECEMBER

- 5 Pembury Afternoon WI: Christmas Party - Village Hall - 2.15pm
- 6 Pembury Evening WI: Seasonal Foods - Village Hall - 7.45pm
- 7 Pembury Footpath Walkers - Bo-Peep Corner - 2.15pm
- 9 St. Peter's Photographic Club - Upper Church Room - 8pm.
- 10 Darby and Joan Club: Christmas Party - Village Hall - 2pm
- 16 Parish Council Meeting - Village Hall - 8pm

## S & B AUTOS

ACCIDENT REPAIR SPECIALISTS



CAMDEN SERVICE STATION · PEMBURY  
24-Hour Recovery Service



RE-SPRAYING CHASSIS JIG ALIGNMENT  
LOW BAKE OVEN FOR FACTORY FINISH

*Come to the people who care  
Friendly advice - Courteous Service  
Fully Experienced Engineers*

## P. J. & J. M. Ditchett

CHEMIST

Medicines	Cosmetics
Baby Products	Fancy Goods
Kodak Films	Gift Sets
Developing & Printing	Toiletries

5 HIGH STREET, Pembury ☎ 822896





25 High Street, Pembury

Telephone 823878

Karen Errett BSc MBCO Ophthalmic Optician

- Friendly, professional service.
- Late night and Saturday morning testing.
- Contact lens fitting, solutions and accessories.
- Over 300 frames on display.
- Glaucoma screening.

**OPENING TIMES** Monday, Tuesday and Friday 9 am-5 pm  
Thursday 9 am-8 pm Saturday 9 am-1 pm  
(Closed for lunch 1 pm-1.40 pm and all day Wednesday)

## Burtons Pembury's Solicitors

- ★ Full Range of Legal Services
- ★ Fast Efficient Friendly Service at Competitive Rates

★ Free First Interview ★

Penn House  
13a High Street  
Pembury

Tel Pembury 824577

## VILLAGE ORGANISATIONS

- ACCESS FOR THE DISABLED - Tun Wells Access Group - Local Rep: Mrs J. Peckham. Tel: 526693
- AGE CONCERN  
Mrs Josephine Darville. Tel: 522591
- ALZHEIMERS DISEASE SOCIETY  
Simon Rooksby, Pineview Day Hospital  
Pembury Hospital. Tel: 823535, Ext 3515
- ASSOCIATION OF PEMBURY FOOTBALL CLUBS  
Jim Smith, 18 Westway. Tel: 823714
- BEAVERS, CUBS AND SCOUTS  
Peter Brookes, 8 Concorde Close, Paddock Wood.  
Tel: 833662
- BOWLS CLUB  
Secretary: S. G. Roberts, 16 Woodhill Park. Tel: 824914
- BROWNIES GUIDER  
Mrs Jones, 14 Lower Green Road. Tel: 823747
- BURMA STAR ASSOCIATION  
Secretary: Mr R. G. G. Whitlock, 6 The Forstal.  
Tel: 822115
- CAMDEN GREEN BADMINTON CLUB  
R. Holt, 50 Ridgeway. Tel: 823830
- CATHOLIC CHURCH  
Rev. Geoffrey Pointer, The Presbytery, 11 Alliance Way,  
Paddock Wood. Tel: 833699
- COMPAID TRUST  
Computer Aid for Disabled People. Tel: 824060  
Transport for Special Needs. Tel: 823488
- CONSERVATIVE PARTY  
Terry Cload, 56 Herons Way. Tel: 823966
- CRICKET CLUB  
Secretary: Peter Chandler. Tel: TW 533886
- DARBY & JOAN CLUB  
Mr C. J. Eason, 183 Hastings Road. Tel: 824673
- FRIENDS OF PEMBURY HOSPITAL  
c/o Pembury Hospital. Tel: 823535
- FRIENDS OF PEMBURY PARISH CHURCH  
Chairman: Mrs S. Clarke, Little Stanton,  
Romford Road. Tel: 823932
- GIRL GUIDERS  
1st Pembury Company: Mrs A. Baker,  
67A High Street. Tel: 824441  
3rd Pembury Company: Mrs J. Lakeland,  
7 Greenleas. Tel: 824916
- HORTICULTURAL SOCIETY  
Mrs Sybil Baker, The Annex, Pembury Hall,  
Old Church Road. Tel: 824597
- HOSPICE IN THE WEALD - PEMBURY LINK GROUP  
Chris Cooper. Tel: 824805
- KENT COLLEGE  
Headmistress: Miss Barbara Crompton. Tel: 822006
- KENTISH VALE ROUND TABLE  
Mr Everden. Tel: 834685 or 832823 (business)
- LABOUR PARTY  
Kevin Barden, 24 Beagles Wood Road. Tel: 824708
- LARKFIELD HALL  
Principal: Mr M. F. M. Day, Cornford Lane. Tel: 822168
- LAWN TENNIS CLUB  
Mrs S. Smith, 2 Ridgeway. Tel: 822405
- LIBERAL DEMOCRATIC PARTY  
Sylvia Abbott, 18 Lower Green Road. Tel: 824031
- MUMS AND TINY TOTS CLUB  
Mrs S. Lathbury, 106 Ridgeway. Tel: 824532
- NATIONAL FEDERATION OF THE BLIND, UK  
Michael Coggles. Tel: 822705
- OUTGROWN CHILDREN'S WEAR  
Mrs S. Rice-Tucker. Tel: 822483
- PEMBURY ATHLETIC (Youth) FOOTBALL CLUB  
Keith Mearing, 114 Beagleswood Road. Tel: 823232
- PEMBURY BRIDGE CLUB  
Geoff Plummer. Tel: 824652
- PEMBURY BUSINESS ASSOCIATION  
T. P. Burton, 13a High Street. Tel: 824577
- PEMBURY F.C. SATURDAY  
Steve Waterman, 35 Dimmock Close, Paddock  
Wood. Tel: 835696
- PEMBURY F.C. SUNDAY  
P. Craxton, 31 Batchelors. Tel: 823928
- PEMBURY FOOTPATH WALKERS  
N. & K. Franklin, 11 The Meadow. Tel: 823212
- PEMBURY FREE CHURCH  
Pastoral Care Assistant - Children/Youth Work -  
Church Office. Tel: 825590
- Pastoral Care Assistant - Di Priest 723216
- PEMBURY FREE CHURCH PLAYGROUP  
Mrs Alison Burgess. Tel: 515714
- PEMBURY FRIENDS OF SEVEN SPRINGS  
Mrs Durant, 39 Lower Green Road. Tel: 822196
- PEMBURY LADIES' SOCIAL GROUP  
Barbara Scholten. Tel: 823445
- PEMBURY UPPER AND OLD CHURCH  
Rev. Stephen Sealy. Tel: 824761
- PEMBURY PLAYERS  
Chairman: J. Norman Draper. Tel: 823975
- PEMBURY PRE-SCHOOL NURSERY  
Mrs J. Brough, 2 Cornford Park. Tel: 824208
- PEMBURY PRIMARY SCHOOL  
Headmaster: Mr R. J. Edom. Tel: 822259
- PEMBURY SCHOOL HOUSE NURSERY  
Teacher in charge: Mrs Hazel Thorne. Tel: 825580
- PEMBURY SEQUENCE DANCE CLUB  
Secretary: Mr Bob Greatrex. Tel: 822669
- PEMBURY SHORT MAT BOWLING CLUB  
Mrs Celia Clifton, Secretary, 8 Woodhill Park.  
Tel: 823272
- PEMBURY SOCIETY  
R. Abbott, 18 Lower Green Road. Tel: 824031
- PEMBURY STOOLBALL CLUB  
Mrs Sandy Rice-Tucker. Tel: 822483
- PRIMARY SCHOOL ASSOCIATION  
A. Mason. Tel: 823052
- PEMBURY VILLAGE MARKET  
Mrs Angela Parsons. Tel: 822154
- ROYAL BRITISH LEGION  
J. Young, 13 Bulls Place.
- ROYAL NATIONAL LIFEBOAT INSTITUTION  
W. H. Dee, 1a Woodhill Park. Tel: 823131
- SANDRA'S HOUSE  
Pre-School Nursery, Mrs S. Toogood, Queens Folly,  
64 Lower Green Road. Tel: 824252
- SCOUT AND GUIDE HQ MANAGEMENT TEAM  
Peter Brookes, 8 Concorde Close, Paddock Wood.  
Tel: 833662
- ST. PETER'S PHOTOGRAPHIC CLUB  
Events Secretary, Carol Brewer. Tel: 822030
- TUNBRIDGE WELLS & DISTRICT VICTIM SUPPORT  
SCHEME  
Tel: 513969
- VENTURE SCOUTS  
Bernie Roberts, 13 Camden Avenue. Tel: 822932
- VILLAGE HALL  
Manager (bookings): Denis Dawes, 29 Greenleas.  
Tel: 822411
- WOMEN'S INSTITUTES  
Afternoon: Mrs Marion Brearley. Tel: 822942  
Evening: Mrs Elizabeth Bellchamber. Tel: 824969
- WRVS  
Mrs H. Swinden, 6 Church Road. Tel: 823378
- YMCA  
Tim Cole, Pembury YMCA. Tel: 823330

## YOUR REPRESENTATIVES

### County Council

Derek Hawes Richards, Hop Press Oast, Mascalls Court Road, Paddock Wood. Tel: 834692

### Borough Council

Mrs Sylvia Abbott, 18 Lower Green Road. Tel: 824031  
Mr Bruce Ballantine, 6 Maidstone Road, Pembury. Tel: 822156  
Mr David Mills, 125 Ridgeway. Tel: 825577

### Parish Council

Mr Ron Abbott, 18 Lower Green Road. Tel: 824031  
Mr Hugh Boorman, 52 Henwood Green Road. Tel: 823068  
Mrs Sarah Clarke, Little Stanton, Romford Road. Tel: 823932  
Mr Terry Cload, 56 Herons Way. Tel: 823966  
Mr David Coleman, 22 Ridgeway. Tel: 823402  
Mr Patrick Gillan, The Red House, 3 Romford Road. Tel: 825324  
Mr Derek Goodwin, 27 Greenleas. Tel: 823822  
Mr Philip Horn, 6 Sandhurst Avenue. Tel: 824720  
Mr Kit Kelly, 22 Hastings Road  
Mrs Gillian Matthews, 2 Gimble Way. Tel: 822057  
Mr Henry Plant, 16 The Coppice. Tel: 823459  
Mrs Betty Roberts, 16 Woodhill Park. Tel: 824914  
Mr Bob Wilkes, 6 Belfield Road. Tel: 823264

Chairman, Highways Committee  
Chairman, Planning Committee  
Chairman of Parish Council

Vice Chairman of Parish Council

Chairman, Amenities Committee  
Chairman, Finance Committee

Chairman, Public Relations Committee  
Chairman, Burial & Allotments Committee  
Chairman, Environmental Committee

### Clerk to the Pembury Parish Council

Mrs Barbara Russell, 6 The Grove. Tel: 823193

## CHURCH TIMES

### ST. PETER'S CHURCH SERVICES

**Upper Church**  
8.00am Holy Communion  
9.45 am The Parish Eucharist  
and Junior Church  
10.00am Holy Communion  
(Wednesdays)

**Old Church**  
11.30am Matins (except  
first Sunday, Holy  
Communion)

Evening services as advertised  
on Church noticeboards

### CATHOLIC CHAPEL OF ST. ANSELM - PEMBURY

Sunday Mass 10.30am  
Holy Days - Vigil Mass  
7.30pm  
Confessions:  
Sunday 10.15am

Weekday Services:  
Monday - Communion  
Service 7.30am  
Tuesday - Communion  
Service 7.30am  
Wednesday - Mass 7.00pm

### PEMBURY FREE CHURCH

We praise God and hear his  
word on Sunday at 10am  
and 6.30pm.  
We have many activities  
during the week for mums,  
toddlers, young people and  
senior citizens. Ring the  
church office 825590 for  
details.  
Di Priest - Pastoral Care  
Assistant - is available for  
personal/private prayer on  
Wednesday mornings from  
10.30am; if you have a need  
or have prayer requests please  
ring her on 723216.

### Laura Russell LCH Homoepath



*Homoepathy is a complete, holistic  
health-care system; uniquely effective in  
many complaints, it can also be used to  
support and work through other  
treatment.*

*For free confidential advice about how  
I may be able to help or to make an  
appointment, please telephone me,  
leaving a message if necessary.*

18 Romford Road, Pembury TN2 4JA  
Telephone (01892) 822626

## PEMBURY PRE SCHOOL NURSERY

Caring for your children's  
pre-school needs

Open Monday to Friday,  
9.15 - 12 noon

Qualified Staff  
£4.50 per session

Children taken from age 2½ years

Tel: Julie Brough  
824208

## Brian V Toogood

DOMESTIC & COMMERCIAL CARPETS & VINYL  
SUPPLIED & FITTED



Stain protection treatment for carpets and upholstery  
FOR PERSONAL & PROFESSIONAL SERVICE



OVER 28 YEARS' experience.  
EST 1977  
Any make of carpet available.  
Pattern books brought to your home.  
Carpet and upholstery cleaning, also  
rugs and orientals.  
Carpets adapted and repaired.

TEL: PEMBURY 824252



Aaron  
Flowers



AARON FLOWERS

124 Henwood Green Road • Pembury  
Kent TN2 4LN

TEL: 01892 822721/822424

OFFICE FLOWERS & PLANT  
CONTRACTS, WEDDINGS,  
FUNERAL TRIBUTES, FLORAL  
& PLANT ARRANGEMENTS  
INCLUDING FRUIT BASKETS.  
SILK & DRIED FLOWERS.  
BOTTLE GARDENS.

INTERFLORA BY CREDIT CARD