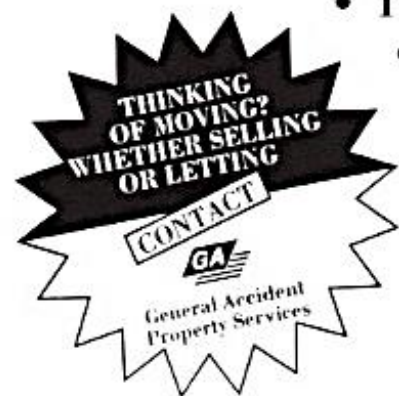


# DO YOU LIVE IN ANY OF THESE AREAS?

- WOODHILL PARK
- HASTINGS ROAD
- MAIDSTONE ROAD
- LOWER GREEN ROAD
- ROMFORD ROAD
- THE COPPICE
- RIDGEWAY
- WESTWAY
- HERONS WAY
- CHURCH ROAD
- THE GROVE
- THE MEADOW
- GIMBLE WAY



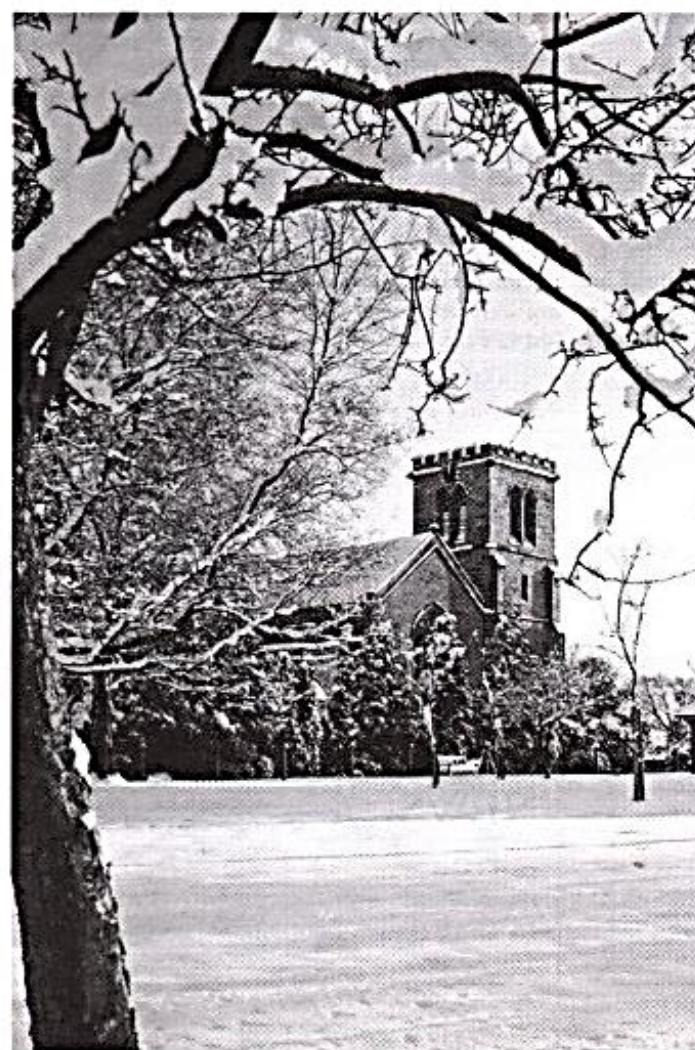
We have recently been successful in selling properties in these areas and consequently have many disappointed keen buyers for a home like yours.

If you live in any of these localities and would like us to help match a buyer to your home, please call the Pembury Office on 825355 and speak to Carol, Simon or Pauline.



# PEMBURY VILLAGE NEWS

Issue 88 / Winter 1996



A Happy Christmas and a Prosperous New Year

## Contents

Christmas Church Services	23
Christmas Day	13
Christmas Trees	15
Church Times	30
Comment	2
For Your Diary	27
Fruits of the Earth	9
Gill's Garden	4
Hospice in the Weald	15
Ivor Beynon	19
Larkfield Hall	5
Law and Order	20
League of Friends of Pembury Hospital - August Fete	3
New Year's Day Walk	4
Pembury Beaver Colony	3
Pembury Community Working Group	20
Pembury Hospital	12/13
Pembury in the Past	22
Pembury on the Internet	9
Pembury Parish Council Quiz	3
Pembury Society	9
Pembury Village Hall - Plan details of the Millennium Project	16/17
Planting in the Rain	4
Profile	6
Sam Dee	19
Sport in the Village	
Pembury Football Club	11
Pembury Stoolball	11
Village Organisations	29
Your Clerk Reports	24
Your Representatives	30

Cover photograph courtesy David Sellman

## Comment

WHEN you look back on the year 2000, will you remember where you were on 1st January 2000? Will you remember where you were on the 30th June 2000? Will you remember where you were on the 31st December 2000? As we look in 1996 only three years ahead we seem to hear about the Millennium from all sorts of strange sources principally, of course, from the Millennium Fund part of the National Lottery through which we are all being encouraged to do something magnificent in order to celebrate the arrival of a new century. As you know the Parish Council hopes that the renovation of the Pembury Village Hall will be its Millennium project, but for each and every individual in Pembury the year 2000 needs to be something special whether for the older person or for young children, who should be able to look back and remember how they celebrated what will be a special year. After all, for all of us, it is going to happen once in a lifetime.

A village Committee is in the process of being formed to discuss how the Millennium in Pembury is to be celebrated but Pembury is your village and you need to feel part of what is being discussed and what is being planned. It is impossible to know what to do without hearing from you. If you have any thoughts or wishes or dreams, why don't you contact either the Editor of this magazine or Barbara Russell, the Clerk to the Parish Council, with your theme for the year 2000. Should

Pembury have a theme? Should that theme start in January 2000? Should it be followed through the year? Should there be special events? Should there be a mammoth firework display? Should there be concerts, classic or modern? Should there be a children's party and a 'Wrinklies' lunch?

Should there be some permanent feature in the village to celebrate the arrival of the third millennium? Should there be a special project in the village over and above the projects that are being planned by the Parish Council?

Over the last years we have celebrated the Queen's Jubilee with street parties, we have celebrated Royal weddings (perhaps Royal divorces too); but the year 2000 will arrive and disappear in a flash and it needs to be remembered, it needs to be celebrated, it needs to be a very special year for all of us.

Time will flash by and all of a sudden it will be Friday 31st December 1999. Whatever is planned, whatever is organised it needs to be planned and organised well in advance. It is not something that can be put together in the last few days of the year 1999.

PLEASE LET US KNOW - after all it's your Parish and your Village.

**Sarah Clarke**  
Chairman  
Pembury Parish Council.

### Editorial Committee:

Henry Plant (Chairman), Kit Kelly, Gill Matthews and Betty Roberts

### COPY FOR NEXT ISSUE

Any news items or articles for possible inclusion in the next issue of this Magazine must be forwarded to the Editor before 20th February 1997.

## PEMBURY VILLAGE NEWS

EDITOR  
Henry Plant  
16 The Coppice  
Tel: 823459

Pembury Village News is published four times a year by the Parish Council, but the views expressed in the magazine do not necessarily represent official council opinion or policy. Typeset and printed by Rapido '91 Limited, Tunbridge Wells.

## PEMBURY HOSPITAL FETE

Once again Fete Day on August 24th was an immense success - in spite of the weather. At 12.30pm the heavens opened and we had torrential rain... at 12.55pm the sun came out and stayed out for the whole of the afternoon. Not only did we reach our target of £10,000 but we exceeded it by 50% and raised a magnificent £15,000.

We had been asked to purchase two electric hoists for the Department of the Care of the Elderly and with the additional funds have been able to purchase a third.

We are so grateful to all of you for your support beforehand, by purchasing raffle tickets - by assisting on the day - or by coming and spending your money and helping us raise this wonderful sum. Thanks to all of you who helped achieve this magnificent result.

**Diana Barber**

## Pembury Beaver Colony Facing Imminent Closure

THE Pembury Beaver Colony faces imminent closure unless a new Leader can be found. A search to find a replacement for the current Beaver Scout Leader, Jenny Blakely, who has decided to resign at Christmas, has so far been unsuccessful. As earlier efforts to find a Leader to start a second Colony were also unsuccessful, the future for the Beavers in Pembury looks increasingly bleak.

Pembury was one of the first Groups to start a Beaver Group when they were introduced into Scouting over ten years ago. During this time, the Colony has given a lot of boys a great deal of fun and enjoyment in a variety of activities.

A measure of its continuing popularity is shown by the size of its waiting list

which currently has over fifty names on it. Closure of the Colony would not only be a big disappointment to these young boys but a sad loss to both Scouting and the village.

The Beavers and everybody involved with the 1st Pembury Scout Group send Jenny a big thank you for all her hard work and efforts with the Beaver Colony over the last eight years. Thank you, Jenny, and good luck for the future.

Anybody who would like more information on becoming either a Beaver Leader or an Assistant Leader should contact Peter Brookes, Group Scout Leader - Paddock Wood 833662

**Peter Brookes**

## PARISH COUNCIL QUIZ

TWENTY FOUR teams took part in the annual quiz on 14 November and raised something in excess of £220 for charity. The winners, The Bigs A's, will nominate the charity to receive 60% of this and the second team, the Friends of Pembury Old Church, will choose a charity to receive the other 40%. Many thanks to all those who helped to make it such a successful evening.



## GILL'S GARDEN

PLANTS that bloom during December, such as Hellebores (Christmas Rose) or Iris Ungularis, need to be protected from slugs.

Leaves should be cleared from lawns and borders and if you have a spare corner you could put a pile of leaves in it. This will encourage hedgehogs to hibernate. In February, when the young hedgehogs are born, they will appreciate a meal of cat or dog food and later will reward you by eating the slugs and other unwanted garden pests.

Weather permitting, plant shrubs, roses and herbaceous plants before the hard frosts set in. Bulbs can still be planted but as it is late

it would be better to plant them in pots which can be placed in the borders when in bloom. This has the advantage that they can be removed easily without having to wait for the foliage to die down and means that there will be no delay in planting summer bedding in late spring.

In the depressing winter weather snowdrops can be the first sign that spring is on its way and when planted with cyclamen can look lovely even in the snow.

Seeds of fibrous begonias and geraniums can be sown under glass in January if heated areas are available.

Gill Matthews

## PLANTING IN THE RAIN - FOR SPRING!!

Planning ahead for a colourful spring on the Village Green meant a damp planting session for the 8 and 9 year old children from Forms 4JH and 4SW of Pembury School as they planted 500 crocuses, donated by Notcutts Garden Centre, Pembury on the Village Green at Pembury on Thursday 30th October, supervised by form teachers and Pembury Parish Councillor Gill Matthews.

The donation of bulbs arose when Mrs Matthews mentioned her long held wish to see crocuses on the Green each year.

"The children were very enthusiastic, despite the weather" commented Mrs Matthews.

"I am sure the whole village will be grateful for their efforts and the donation by Notcutts, next Spring".



## A PEMBURY NEW YEAR'S DAY WALK

Why not start the new year by joining us on a circular, cross-country walk from Stonecourt Lane to the Bird Sanctuary in Tudeley Woods (unfortunately 'no dogs allowed')?

Unless New Year's Day brings dense fog, torrential rain or uncomfortably icy conditions the walk will leave the Stonecourt Lane bus stop at 10am and return there three hours later. Anyone wishing to join us will be very welcome.

Brian Toseland

## LARKFIELD HALL

I AM sure that many readers will have heard about Larkfield Hall but may not know exactly what it is that we do, so I hope you will not mind if I take this opportunity to tell you a little about ourselves.

Larkfield Hall was founded in 1927 as a school for children with a mental handicap. At that time it was situated in Larkfield near Maidstone, hence the name we carry today.

In 1961 we moved to our present site in Cornford Lane. Since then the community has grown and we now provide a residential and day care service for 56 adults with learning difficulties.

Their ages vary from 24 up to 72, with the majority now being in their forties. The residents are housed in eleven separate living units and we have approximately 100 acres of farmland.

It is our aim to provide a 'home' for life in which we encourage each resident to develop to his or her maximum potential. With our support and guidance we help them to make decisions which have a positive effect on their everyday lives.

We offer a wide variety of day activities which include estate and horticultural work, a forge, woodwork, pottery, fabric craft, weaving and art and craft. Recent additions to these activities are computer studies and stained glass.

We now have a shop which you are most welcome to visit. It has a good selection of work which has been produced by our residents. Christmas is nearly upon us so a quick trip to our shop may supply just the gift you are looking for.

Many of you will have purchased plants from us during the summer, which is a project that we have been building up over the recent years. This year we were pleased to donate a number of trays of bedding plants to Pembury Village for planting-up the Coronation Garden and areas on the Green.

We were tremendously proud to hear in November that as part of the 'Britain in Bloom' competition we had been awarded an Order of Merit for our gardens. What a wonderful advertisement for the bedding plants!



These are all produced by our residents using the simplest methods so that everyone can be involved whatever their handicap.

The adjoining picture shows the presentation of the Certificate of Merit by Mary Miller (the Tunbridge Wells

Borough Council's co-ordinator for the Britain in Bloom Competition) to Mike Giles, the Estate Instructor at Larkfield Hall.

Part of our philosophy is to become involved with projects in our local community. We have recently undertaken some gardening work at Lamberhurst Vineyards, which we hope will be ongoing, and also a group of our residents helped to establish a Donkey Sanctuary at Burrswood, which is a community in Groombridge.

I think the best way to find out more about what we do is to pay us a visit. You will be most welcome.

Martin Day  
Principal

## Profile

Tom Morphet

Tom Morphet, who is now in his 88th year, has lived in Pembury most of his life. He can remember what Pembury School and the village were like during the First World War when he was six years old. Classes at the school were large, discipline very strict and children took time off from school during the summer and autumn to help on the land. Some travelled long distances on foot from outlying farms to attend school. Tom's father was a shepherd and the family, including eight children, lived in a cottage at Stonecourt Farm. He remembers when both the Brickworks and Penns Yard employed a large number of men. The present Recreation Ground was pasture for sheep; he would help his father tend the flock there.

Tom was very good at art but he left school at the age of 14, helped his dad on the farm and then took up coach painting for a large firm in Tunbridge Wells. In particular he loved painting nature. Unfortunately it was almost unheard of in the '20s for a farmworker's son to go to college to study art. He has no regrets, he enjoyed his work and continued with this trade until he retired, except for his war service. After a year as a local Air Raid Warden in 1940 Tom joined the RAF. He worked as a storesman dealing mainly with aircraft parts for Spitfires, serving in Norfolk, Kent and in Iraq. He can recall some horrendous experiences in the desert. He explained to me that he vowed that if he survived the War on his return home he would work for the Church for the rest of his life: Tom has always been a committed Christian, for many years he was Secretary of the Free Church in Pembury. After 33 years working as a coach painter Tom retired.



For 70 years Tom cycled everywhere and yet he worked on all types of cars and vans during that time. He is appalled at the increase of traffic on the local roads. For two years he was a member of the Parish Council and for many years a member of the Scout movement, also a keen supporter of the village youth football teams. Tom was a very enthusiastic member of the Pembury Choral Society, singing as a tenor. He was happily married to Ann for over 50 years and for the last two years has lived at Cornford House. Tom has one son, David, who still lives in the village.

Tom says "not only has the whole character of the village changed but the people also!" I judge that he meant people today care less about others, and that material things matter more to most people than living a good Christian life. Tom was an easy person to interview, he just expressed his view and told me something of his life. His memories are a valuable record of life during the last turbulent 80 years.

Sylvia Abbott

PICK  
•  
YOUR  
•  
OWN  
&  
READY  
PICKED  
FRUIT



Maidstone Rd, Pembury  
Pembury 824569

STRAWBERRIES & RASPBERRIES  
LOGANBERRIES & TAYBERRIES  
GOOSEBERRIES & REDCURRANTS  
BLACKCURRANTS & BLACKBERRIES  
PLUMS & CHERRIES  
APPLES & PEARS

Also PIPPINS VINTAGE KENT CIDER  
June-October : See local press for details



Sarah L. Wilson, A.R.A.D., A.I.S.T.D.

BALLET, MODERN, TAP, JAZZ, ADULT KEEP FIT

ALL GRADES & ISTD EXAMINATIONS

Special Pre-School Classes

Telephone: (01959) 562329



Home Improvements - Extensions - Free Estimates

# ALAN CLARKE

BUILDERS & DECORATORS

Tel: Pembury 823932

# PBSS

Pembury Business & Secretarial Services<sup>SM</sup>

CVs  
Translations  
Word processing  
Mailshots & mailing address  
Business & personal stationery  
Book-keeping & credit control  
Personalised wedding stationery



Tel: (01892) 824833 & 824938

Fax: (01892) 825134

email: partners@pbss.demon.co.uk

## WALROND & CO

CHARTERED SURVEYORS

01892 511899

STRUCTURAL SURVEYS :: VALUATIONS  
AND ALL PROPERTY ADVICE

## CHIROPODY SERVICE

HOME VISITS ONLY

Mrs C. M. Bathurst MBChA MSSCh

Tel: Pembury 822398

## PEMBURY ON THE INTERNET

The village of Pembury is now on the Internet.

As part of its recent expansion, Pembury Business & Secretarial Services (PBSS) has joined the information superhighway and now has its own information pages on the World Wide Web. Naturally enough, a page about the village of Pembury is included, giving a brief history and detailing some of the activities that

make up village life.

The page on Pembury tries to be as interesting and informative as possible. Thus anybody in any part of the world can get a flavour of what is going on in a Kent village in the last part of the twentieth century.

The Internet address is: <http://www.pbss.demon.co.uk>

## FRUITS OF THE EARTH

IT WAS rather a mixed result, some good, some poor, when it came to collecting the wild fruits this year. Blackberries were nowhere near as plentiful as was first thought and mushrooms were virtually non-existent from my usual fields.

However elderberries and sloes were in great abundance and, for those who make sloc gin, here is an old country recipe from a book owned by my friend Dennis Cole.

### Chocolate Sloes

When you have drained the fluid from the sloes, take six ounces of sloes and cut off the fruit. Melt eight ounces of chocolate, add the sloes, and allow to set on rice paper. When cold cut into squares and store in an airtight tin. For variation, add chopped cob nuts to the melted chocolate and sloes.

*Be warned - Don't eat and drive!!*

Hughie Boorman

## THE PEMBURY SOCIETY

THE AGM of The Pembury Society was held in the Village Hall on the evening of Monday 28th October 1996. Some 60 members attended and, bearing in mind that this was the night of the storm with high winds and tumultuous rain, this was remarkable support.

In his annual report Ron Abbott, the Chairman, told the Meeting of the work undertaken by the Committee which included visits to and liaison with other similar societies, participation at the Village Fayre, consideration of planning applications and attendance at Planning Committee meetings at Borough level. He added that after five years as Chairman he had decided, with some reluctance, that the time had come to hand over to a successor.

The Treasurer and the Membership Secretary then gave their reports which showed a healthy state of finance and an ever increasing membership.

At the election of officers, Derek Johnson was elected Chairman, Don Oake as Vice-Chairman, Monica Marshall as Secretary, Norman Whitton as Treasurer and Ken Watts as Membership Secretary. Other members of the Committee will be Elizabeth Repath, Lyne Taylor and Robert Saunders.

A presentation was then made to Ron Abbott as a thank-you for all his work as Chairman and to his wife Sylvia for her practical support over the five years.

Bob Ogle, the author and publisher, gave an excellent talk on Kent and its people during the war and the whole evening was judged a complete success. Fortunately the roof of the Village Hall resisted all attempts by the elements to join this convivial event.

Derek Johnson

## SPORT IN THE VILLAGE

### PEMBURY FOOTBALL CLUB

All four Pembury teams are now fully occupied in their various league and cup competitions and hopefully progressing to successful seasons' ends next Spring.

Since last season's unsuccessful attempt to join the Nuclear Electric League, the Saturday First Team has played and beaten four teams from that League in a mixture of friendlies and cup matches!!! Hopefully next season we can also play and beat them in the League competition but this will depend not only on us continuing to perform well on the pitch but also on the new pavilion being constructed. This later point is still at the lease negotiation stage between the Association of Pembury Football Clubs and the Pembury Parish Council. Hopefully by the time you are reading this article the lease will have been agreed upon.

The Reserves on Saturday have had a very good start to their season and at the time of writing are joint leaders of their division. Well done - keep it up!

Like the Saturday sides, the Sunday First Team has had injury problems which have made the start to the season difficult. However, there have been some impressive results, particularly the draws against Blue Boys and Artois, who are somewhat looked upon as the Liverpool and Manchester United of the West Kent Sunday Football League. Our first team captain, John West, has now been made captain of Tunbridge Wells F.C.

The Sunday Reserves have had a slow start this year what with playing in a higher division and then losing players to the First Team through injuries. However, things are improving and it is hoped that now they are almost up to full strength the results will continue to improve.

May I, on behalf of the Club and all its members, supporters etc. be amongst the first to wish you all a very Merry Christmas and a prosperous New Year.

Jim Smith

### PEMBURY STOOLBALL CLUB

Mixed success for Stoolball!!!

The Pembury Ladies' Stoolball Club has now been in existence for four years, playing in the West Kent Ladies Stoolball League on Monday and Wednesday evenings throughout the summer. The Club currently has around 20 playing members with ages ranging from mid-teens to fifties. Each year since its formation the Club has improved its playing strength and League position.

Last season was no exception with the Club climbing to 11th, winning eight matches (compared to two the previous season) and only losing on a single run to the eventual League champions. The team is already looking forward to next year when it again hopes to improve on its position.

Two years ago it was decided to enter a team comprising six men and five women in the West Kent Mixed Stoolball League which plays on a Thursday evening. Success has arrived somewhat quicker for this team with the side finishing joint second in its first season. Last season, however, the team went one better by becoming League champions and winning 12 of its 14 games. The side also added to their success by winning the League tournament held at Hildenborough in July.

The Clubs are always interested in new players - for further details contact Sandie or Andy Rice-Tucker on 822483

Andy Rice-Tucker

## Madeleine Townsend and Co. Solicitor



\*\* PERSONAL INJURY CLAIMS \*\*  
\*\* MATRIMONIAL AND FAMILY \*\*  
\*\* CONTRACT AND EMPLOYMENT \*\*

ASK FOR FREE FIRST INTERVIEW  
PHONE 01892 515284



A QUALITY SERVICE

Justin House, 46A High Street, Tunbridge Wells, Kent TN1 1XF

## JILL NOAKES DRESSMAKER

Pippins Farm, Pembury

We offer a comprehensive and professional service in all forms of curtain making, tie backs and valances. Dressmaking is carried out to a high standard and we specialise in wedding gowns made to your designs. Full alteration service.

Pembury 823299 or 824260



## STURGEON'S OF PEMBURY

Specialists in all types of Road and Drive Construction

Coal Merchants • Haulage Contractors

Henwood Green, Pembury. Tel: 822221/2/3

## JULIE T. ROBINSON IHBC, BABTAC

Professional Beauty Therapist



FULL RANGE OF PROFESSIONAL BEAUTY TREATMENTS AVAILABLE WITHIN COMFORTABLE AND PRIVATE SURROUNDINGS



SPECIALISED DERMALOGICA FACIALS \* ELECTROLYSIS \* MANICURES/PEDICURES  
WAXING \* BRIDAL/SPECIAL OCCASION MAKE-UP \* TOP-TO-TOE TREATMENTS

Products do not contain artificial fragrance and are cruelty free.

Please telephone for a list of treatment details. PEMBURY (01892) 824059

## PEMBURY HOSPITAL

At a recent Parish Council Meeting, John Evans the Chief Executive of the Kent and Sussex Weald NHS Trust (responsible for the Kent and Sussex and the Pembury and Homoeopathic hospitals) talked to Councillors about the plans the Trust had for development of services locally.

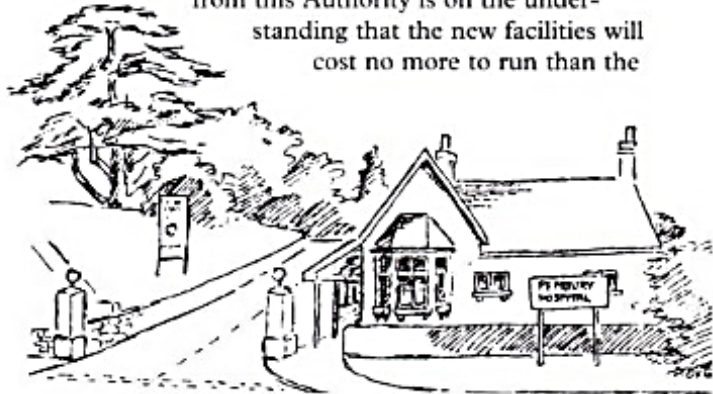
He said that the Trust had come into being on 1st April 1994 and had taken over the services previously run by the Acute Unit as part of the Tunbridge Wells Health Authority. He had been concerned that the services had a reputation for overspending their budgets and for closing beds at the end of the financial year but he and the Trust Board had been determined, when they came into being, that this pattern would not continue. At the end of the first year of the Trust's existence there had been no hospital closures to emergencies, the number of patients treated had increased and the Trust had met its financial duties. This improvement has continued in the second and third years of the Trust's existence.

It has long been a desire in Tunbridge Wells to bring all acute services onto one site. Having services on separate sites makes for poor integration and communication and although every attempt is made to minimise these drawbacks it is not necessarily in the best interests of effective patient care. Attempts have been made in the past by the Tunbridge Wells Health Authority to put up a scheme to bring the services together on the Pembury site but this has failed to attract funds from the Regional Health Authority. Capital expenditure in the Health Service currently is seen as primarily coming from private sources rather than from the Government.

The Trust is of the view that having put its financial house in order it is now the time to look again at improving the configuration of services in Tunbridge Wells and as such has embarked on a process of seeking private finance partners to work on the re-provision of services in the area.

Mr Evans explained that Government money for projects like this will not be available unless and until attempts had been made to find funding from the private sector. The Trust welcomes this opportunity to look for new sources of funding as it is probably its best opportunity to take forward its strategic plans.

There is, however, a somewhat bureaucratic process through which the Trust will have to go and Mr Evans explained that the first step is to put together a document, which was called 'An Outline Business Case', which has to demonstrate what services the Trust will wish to provide, where it is going to locate them, how much it is going to cost both in terms of buildings and in terms of running costs and how those running costs will be covered. This document was completed in September 1995, the Trust having obtained the necessary approval from the Trust's main purchaser, the West Kent Health Authority, in April 1996. The approval from this Authority is on the understanding that the new facilities will cost no more to run than the



facilities they are replacing, and the Trust Board is confident that the economies that can be brought about as a result of bringing services onto one site will enable this assurance to be given.

West Kent Health Authority is also carrying out a review of community hospitals and this may have some effect on the size of the acute hospital presence required in Tunbridge Wells.

Having obtained the approval to the Outline Business Case, the Trust has now to seek partners from the private sector. In accordance with EEC regulations, this business opportunity has been advertised in the *European Journal* and there are currently a relatively large number of organisations who wish to be considered for participation in the scheme.

It is hoped that the Trust will have short-listed potential private sector partners by late Spring of next year when with them, the Trust will produce a Full Business Case for submission to the West Kent Health Authority, the Regional Office of the National Health Service Executive and the

Treasury. Once these approvals have been obtained it is hoped that the project can go ahead rapidly. Mr Evans stated that the Trust are currently targeting the year 2000 as the date to get this project underway. The preferred site for the development identified in the Outline Business Case was Pembury Hospital. However, the private sector partner will be asked to come forward with proposals to deliver the service that the Trust requires and they may suggest an alternative solution. They could, for instance, suggest a green field site somewhere in Tunbridge Wells and providing that the site was delivering the services in the sort of relationship and the quantity that the Trust required, then the Trust may well decide to accept that proposal. The development is not about a particular site but about the improvement in service for patients in Tunbridge Wells.

After receiving and answering questions from the Councillors and members of the public, Mr Evans thanked the Parish Council for the opportunity to explain the situation to them.

**Henry Plant**

## CHRISTMAS DAY

Same rules apply as last year. Eat, drink and be merry, but for those who don't get out and exercise there will be a compulsory increase in their Council Tax. Those who are assessed to have eaten the most and exercised the least will have their Tax doubled. (I'm only joking.)



Don't forget, if you know of someone who lives on their own or has no family, even if they are not related, send them a card, or better still deliver it to them personally and wish them the best of the Season. But don't let it happen just at Christmas - make it a habit, especially when the cold weather arrives.

Not only will it make them feel good but it will do the same for you.

**Merry Christmas**

**Hughie Boorman**

## Kempsters

### The Funeral Directors

Partners: BRIAN KEMPSTER Dip.F.D., M.B.I.E. & JESSICA KEMPSTER

A family business that has served the community in Kent and Sussex since 1882

**A COMPLETE 24 HOUR FUNERAL SERVICE**

OFFICE AND CHAPELS OF REST AT  
2-4 ALBION ROAD • TUNBRIDGE WELLS

**Telephone: 01892 523131**



Be thoughtful, take out a  
GOLDEN CHARTER  
PRE-PAID FUNERAL PLAN



## DUSTBUSTERS HOUSE CLEANING SERVICES

The Red Cottage  
3 Romford Road  
Pembury  
Tel: Pembury 825324  
or 825362



**Finding housework stressful?  
Let us take the strain!**

- Fully insured
- References available
- All equipment and supplies provided at no extra cost
- Estimates available for Weekly, Bi-Weekly and Spring Cleans.

## BURSLEM MEMORIALS

A Family Business Since 1880  
TUNBRIDGE WELLS (01892) 526733

• Additional Inscriptions  
Renovation & Cleaning • Home Visits by appointment  
Courtesy Car to visit our Showroom available on request.

**BENHALL MILL ROAD, TUNBRIDGE WELLS**  
Opposite Crematorium



## HOSPICE IN THE WEALD

**H**OSPICE in the Weald have set a new target for the next eight months in their bid to provide the much needed in-patient hospice for patients with a terminal illness and their families to be built at Pembury.

The Hospice for West Kent and northern East Sussex needs a further £950,000 to fit out and commission the in-patient wing. This would allow them to operate the bedded unit before the completion of the fitting-out of the rest of the building. If this sum can be raised by 1997 building contracts can be entered into with construction work completed by July 1998.

The Hospice shop at 18 High Street, the premises previously occupied by Stans, opened on 2nd September 1996 and has so far been very successful, thanks to a great deal of very hard work by Mrs Sue Boreham and her team of helpers, all of whom are unpaid volunteers.

The shop has only limited storage space and it would be appreciated if people bringing in clothes in particular would bear the Season in mind. If you have unwanted summer garments to offer, for instance, please save them until next Summer to give to the shop then. Donors are also asked to remember that the shop aims to sell good quality articles only, not jumble.

Notcutts Garden Centre in Tonbridge Road, Pembury, has chosen The Hospice in the Weald to be its Christmas charity this year. The Hospice will benefit directly from the various fund raising activities taking place in the Garden Centre.

This Christmas whenever children visit Santa Claus in his Grotto at Notcutts they will be greeted by Santa's helpers (volunteers from the Hospice's Pembury Link Group). Out of the £1 charge for visiting Santa, 50p will be donated directly to the Pembury Link Group's aim to raise money to 'buy' a room at the new Hospice to be called 'The Pembury Room' as will the money from the water feature on display and the various raffles taking place. 'The Pembury Room' target of £30,000, the fundraising for which is quite separate from the shop, is now well past the half-way mark. By mid-October it had reached £17,669 - thanks to donations, the stalls run at the various fetes during the summer and especially to the Pippin Apple and Cider Fair on 5th October, which added a magnificent £1786 to the fund. For that thanks are due to Mr David Knight, Pippins owner, both for inviting the Link Group to take part and for making a generous donation from his own profits for the day.

The next event is the Pembury Players' popular annual pantomime at the Village Hall from 8th to 11th January. This year's production is 'Aladdin' and again all profits will go to the Pembury Room, thanks to sponsorship. Tickets can be bought from Ditchetts, the Chemists, or The Hospice Shop. Book early because last year's performances soon sold out.

## CHRISTMAS TREES

Along with the bills after Christmas, comes the problem - how can we dispose of our Christmas trees?

Problem solved! The good news is that until Sunday 12th January, Notcutts Garden Centre will be glad to accept your real Christmas tree for recycling. There will be no charge but you can make a donation to their Christmas charity, which this year is the Hospice in the Weald. In exchange for your old Christmas tree, Notcutts will give you money off vouchers to be spent in the Garden Centre.



# PEMBURY MILLENNIUM VILLAGE HALL

READERS of the Pembury Village News will be aware from our last issue that proposals are now underway to replace our present Village Hall in the High Street with a modern building suited to the needs of Pembury.

Planning permission will obviously be required for this project and the appointed architect has now submitted the details to the Tunbridge Wells Borough Council.

However, of equal importance to the success of this exciting project is the realisation of adequate finance to enable the construction and the fitting out of the Hall to be satisfactorily completed.

The proposed Hall will rely to a very large extent on the success of several sources of money that are available to us by means of a variety of Grants, and this article provides an insight into the very complicated procedure that has to be followed.

Two basic grants for the reimbursement or rebuilding of a hall have existed for some years and these are provided by the Tunbridge Wells Borough Council and the Kent County Council who can, if they wish, contribute 25% and 50% of the cost

respectively. There is, though, a cash limit on these sums in any one financial year. In addition a Grant may be available from the Rural Development Commission who do offer aid in certain clearly defined circumstances for a project such as ours in Pembury.

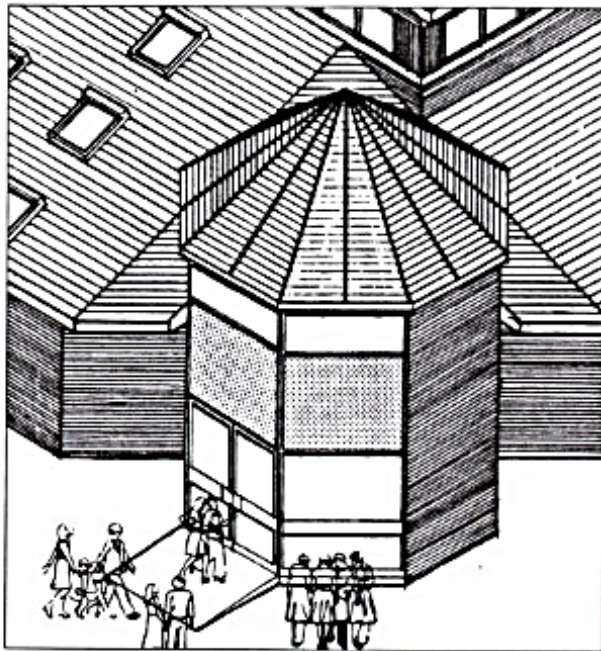
These grants could take us to a figure of between 40% and 50% of the total cost if they are all successful.

So, you may well ask, who is supposed to find the remaining 50% to 60%. Naturally the Pembury Parish Council will make a substantial contribution to the overall cost of the Hall by use of the fund which they set up a few years ago to provide capital for such a project as this one.

The particular significance of the timing of our own Village Hall proposal is in relation to a specific

one-off fund via a grant from the Millennium Lottery Commission.

As would be expected for a fund of this nature the Millennium Board are looking for outstanding Village Hall projects to celebrate the advent of the 21st Century and although precise details are not yet known of the form that the necessary application will take, it is this source of finance and the



An isometric view of the new shaped entrance foyer to the Village Hall

success of an application which will, in the end, decide whether the project goes ahead or not.

These are very exciting and challenging times for Pembury, which has waited many years for the climate to be right to replace our present hall and we should be keeping our fingers crossed.

In addition to the actual sums of money involved the Village Hall Management Committee and the Parish Council need to ensure that each of these four grants are obtained because they are inter-related and eventually linked through the Kent Rural Community Council based at Folkestone. Regular discussions are taking place with the Village Hall's Advisor employed by the KRCC.

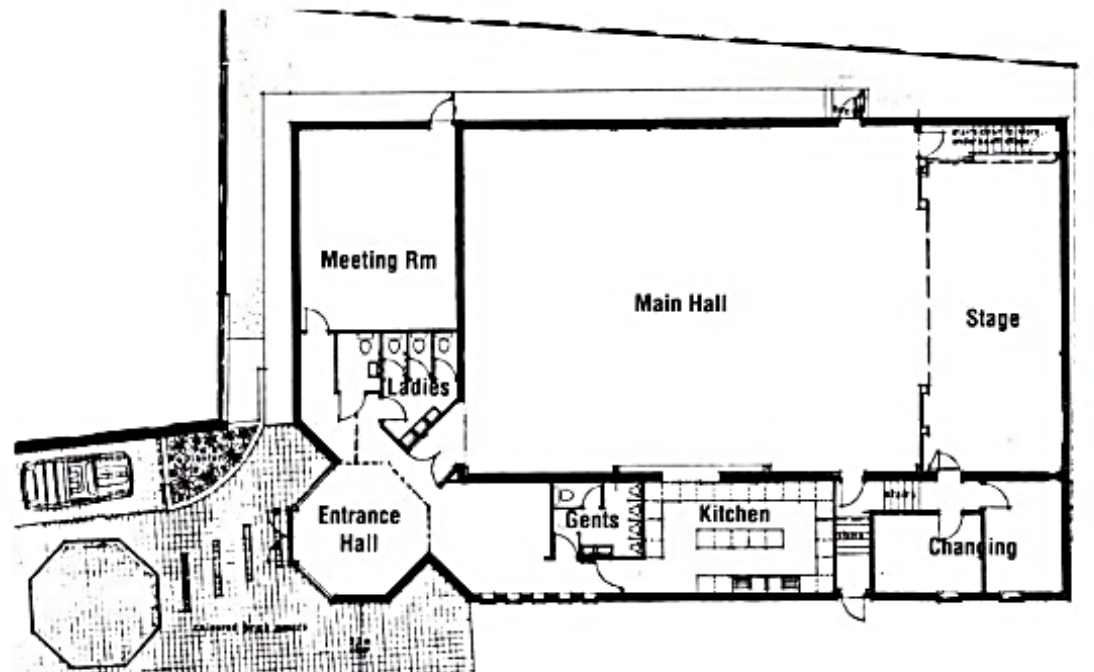
The new Hall will provide a main activity area, slightly larger than our present one, which will be enclosed on two sides by a separate meeting room, new toilet

accommodation with provision for disabled visitors, kitchen, changing/dressing rooms adjacent to the stage and an octagonal shaped entrance foyer as shown. The existing tarmac drive will be laid out in areas of patterned paving brickwork and new decorative brick walls will be built on either side to form a completely new approach from the High Street.

Your Parish Council have planned the new Hall and its associated areas to cater for all the village organisations and to enable recreation badminton to be played together with sufficient space for short-mat bowling.

Our 21st Century Village Hall will be a pure replacement of our existing building and your Council still remains committed to a second community facility on the land set aside as part of the Woodgate Corner development in the Tunbridge Wells Borough Local Plan.

Henry Plant



## J.C. WOOD

PAINTER & DECORATOR

Est. 1984

INTERIOR & EXTERIOR PAINTING • PAPER HANGING  
ALL HOUSE MAINTENANCE • GLAZING & WALL TILING  
NO JOB TOO SMALL

Telephone: Pembury 824877



## JW Services (Pembury)

MOBILE CAR REPAIRS AT HOME OR WORK  
• BREAKDOWN FACILITIES •

ALL makes of cars including Citroen & Diesels  
repaired and serviced. Full Service:  
4 CYLINDERS: £65 - 6 CYLINDERS: £75

SECONDHAND CARS BOUGHT AND  
SOLD (WITH OR WITHOUT MOT)  
MOBILE CAR PHONES  
SUPPLIED AND FITTED

PHONE JIMMY WEBB - 825212 (Home) - 0860 270293 (Mobile)

THE WILDSIDE TRUST at

## BADSELL PARK FARM

CRITTENDEN ROAD, MATFIELD, TONBRIDGE, KENT

2 1/2 miles north of Pembury off A228

Pet Area and Animal Park • Rare Breeds, Fancy Fowl, Young Animals to stroke • Tropical Butterfly and Ant House  
• Indoor Play Barn • Bouncy Castle • Outdoor Play Areas • Tractor, Pony, Horse and Cart Rides • PYO Fruit & Gift  
Shop • Nature Trails • Cafe • School Parties and Children's Birthday Parties

OPEN EVERY DAY from 16 March 1996, 10 am - 5.30 pm

For special events and other information ring 837228 / 832549

The Wildside Trust is a registered charity dedicated to environmental education and helping socially, physically and learning disabled people.

## REFLEXOLOGY & CRANIO-SACRAL THERAPY

NATURAL APPROACHES TO HEALTH WHICH CAN HELP MANY  
PERSISTENT CONDITIONS AS WELL AS IMMEDIATE PROBLEMS  
including digestive, circulatory, stress, fatigue, injuries, aches and pains

**ALICIA ARTHUR MAR, MCCST**

Registered Qualified Member of the Association of Reflexology and College of Cranial-Sacral Therapy  
Telephone PEMBURY (01892) 824387 for treatment details without obligation

## WILLIAM 'SAM' DEE

Sadly missed from our village life will be William ('Sam') Dee who died suddenly, following a heart attack, on 27th October 1996.

Sam had lived in Woodhill Park for 20 years and was well known for his tireless work for the Royal National Lifeboat Institution's Pembury Branch, of which he was Branch Chairman. He also had a keen interest in Pembury Bowls Club.

In his earlier life, Sam saw service with the Royal Navy - mainly in the Far East during World War II. In the 1950s, he joined the Civil Service and rose through the ranks of the Post Office's financial division - a career regrettably cut short by ill-health, which forced his early retirement.

For the past four years, Sam has battled against cancer. His condition necessitated the amputation of a leg earlier this year.

But throughout his troubles, Sam remained ever cheerful and optimistic about his future. To epitomise this, just a few days before his death, he was in conversation with a lady to whom he confided that he was a twin. To which the lady replied 'Were you an identical twin?' Sam replied with a chuckle 'No - he has two legs!!'

His enthusiasm for the RNLI was a constant inspiration for all those who worked with him on the local committee.

Sam leaves a widow, Iris, a son, Geoffrey, and a daughter, Andrea, as well as four grandchildren. His family would be delighted to receive donations, in his memory, in favour of the 'RNLI Pembury Branch'.

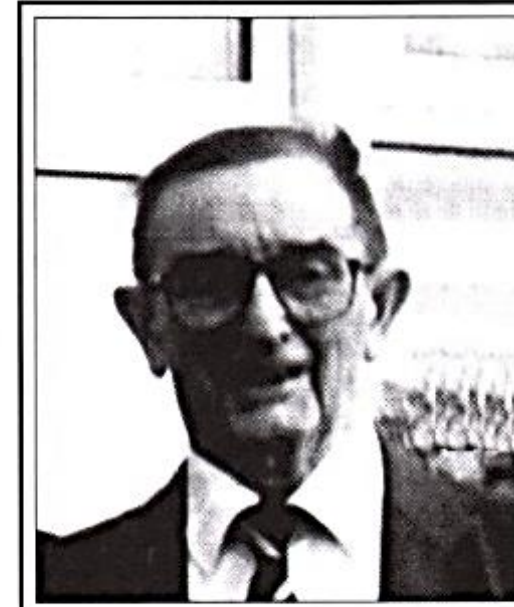


## IVOR BEYNON

Those of us whose children were taught at Pembury Primary School, as it was once called, and, of course, the children themselves, will be saddened by news that reached us recently that Ivor Beynon died peacefully at the John Radcliffe Hospital, Oxford on November 3rd in his eighty fifth year.

Mr Beynon was Headmaster of the Pembury Junior School from 1951 and Headmaster of the amalgamated Pembury Infant and Junior Schools from 1961 until his retirement in 1976.

Henry Plant



## PEMBURY COMMUNITY WORKING GROUP

THE WORKING GROUP has now been in existence for eight months and is beginning to sort out a few of the problems we have had in the village, though we are only too aware that we still have a long way to go.

Some of the 'trouble' in the village has been caused by a small group of young drinkers. Despite the fact that most of them are under age, they seem to be able to obtain alcoholic drink from somewhere. Not only do they cause mindless damage when they've been drinking but they're starting a habit they may not be able to control when they are older. All the village public houses and off licences have now agreed to operate an identity card scheme aimed at preventing the sale of alcoholic drinks to under age youngsters and we ask all adults to co-operate with them in this.

We have asked that Neighbourhood Watch co-ordinators should see that messages are passed to all who live in their area (this seems to have lapsed in some roads).

If you do not have a scheme in your road, how about starting one? Clive Janes at Southborough Police Station will be pleased to hear from you.

Meanwhile, if you witness property being damaged or you see something suspicious happening, please report it to the police and make sure you get a Crime Report number - this can be followed up to find out the result of the enquiries.

Finally, if you have any problems you would like the Committee to discuss, please let me know.

**Betty Roberts**

## LAW & ORDER - *Where do we go from here?*

Despite all the successes in 1996 there are two incidents we must never forget and they are the tragedies of Dunblane and the murder of Mr Lawrence, the School Headmaster. A measure of the joint determination to rid our country of the possibility of such horrors ever occurring again has got to be an all parliamentary party determination to pursue the common law and order and punishment together, and not to score points off each other.

Mrs Frances Lawrence, the Headmaster's wife, made some very simple but common-sense requests of us all following the trial of her husband's murderer and they all relate to a return to the very rules of life; Courtesy, Respect and Discipline. Everybody has a degree of responsibility.

Parents cannot expect teachers to become the tamers of their unruly offspring; neither should parents of well behaved children expect to see their position of authority

eroded by schools that do not set a high standard of behaviour and discipline. And we do not expect our Parish Clerk when reporting severe damage to one of the Parish Council's bus shelters to be requested by the Tunbridge Wells Police to go knocking on neighbouring doors to see if they heard anything or could give any details of the youth seen roaming around the village with an air gun.

Nor should the Police be kicked in the face when, as recently happened, a judge apologised to a mugger and reduced his sentence because he had not taken into account the mugger's remorse for what he had done.

Jointly, the will and the muscle is there to turn the tide against the troublemakers amongst us and it would be a great memorial to Dunblane and Mr Lawrence if, by the end of 1997, we can witness the change.



## T. W. BOORMAN FUNERAL SERVICES

AT A TIME OF BEREAVEMENT YOU WILL NEED THE CARE, SENSITIVITY AND PROFESSIONALISM FOR WHICH WE ARE RENOWNED.

Own Floristry Department Headstone and Memorials Service Sheets produced  
No Charges for Last Respects No Charges for Local Removals  
24 Hour Service

**Telephone (01892) 541070**

**31 Mount Ephraim, Tunbridge Wells, Kent TN4 8AA**

## G. F. GROVES

Your friendly local builder

CARPENTERS  
JOINERS

BUILDING  
CONTRACTORS

EXTENSIONS/CONVERSIONS/NEW-BUILD

PLANNING SERVICE AVAILABLE  
PURPOSE-MADE JOINERY

FREE ESTIMATES • FAST SERVICE

**Telephone (01892) 838619**

## PEMBURY IN THE PAST

### A LOST FARM

During the last few decades quite a number of farms have disappeared throughout the UK. Usually the land has been developed for houses, industrial estates, new roads and reservoirs. Bassetts Farm was different, it was planted with trees.

The house and buildings were situated just west of the junction of Footpaths 224 and 226 adjacent to the boundary of Snipe Wood. The land which lay on both sides of the steep sided valley, the further boundary being Romford Road between Footpaths 222 and 228, was all grass, over-run with rabbits and with bracken, heather and tree seedlings slowly encroaching over the land.

The farm house was a small square weather boarded house with a slate roof, no electricity or other modern conveniences. The buildings consisted of a small cowshed, small barn and stable and other small buildings. Even by pre-1939 standards the house and buildings were poor. The stack yard was on the other side of the valley near the junctions of Footpaths 222 and 224.

The access to the farm, other than through Snipe Wood, was by a track joining Romford Road where Footpath 221 crosses the road. Beside this track was a shed where groceries, coal, post and other farm provisions were left for collection.

The last tenants, a Mr and Mrs Grover, farmed Bassetts as a dairy farm. The milk produced was carried twice a day by yoke and two buckets through Snipe Wood to the end of the Woodlands where it was collected by one of the local milk retailers for bottling and delivery. This was carried out 365 days of the year regardless of weather.

When Mr and Mrs Grover gave up the struggle just prior to the outbreak of the war in 1939, Mr Grover went to work at the Waterworks and the farm was planted up with conifers. On retirement the Grovers moved out of the farm house which was then demolished and the area planted up with more conifers.

Today it is very hard to find or visualise that there was a farm called Bassetts Farm in that area. It is no longer shown on the up-to-date Ordnance Maps.

**Dick Miles**

### PIG HANGMAN'S STILE

This tale was originally told to me many years ago by Nimbo Parsons who used to live in Romford Road but sadly passed away a few years ago. This story has been told before by Mary Standen and many thanks to her for her assistance on this occasion.

Down in the bottom of Snipe Wood, adjoining the apple orchard, there runs a stream. The remains of The Old Mill, known as Keys Mill, can still be seen. The miller had been requested to help the farmer at Three Towns, the other side of Romford Road, to slaughter a pig.

After the pig was slaughtered arrangements were made for the miller to return the next day, possibly via Footpath 222 and 224, to help the farmer cut the pig into joints but it would appear that the miller had other ideas. Having got slightly tipsy that evening he decided he would make better use of the pig. Imagine the scene as the miller crept down the path through the woods with the heavy pig over his shoulder, pausing every so often to catch his breath and listen for followers. The miller was carrying the pig using a gamble, which was normally made of wood and was used for hanging up the pig by its rear legs. Unfortunately the poor miller met his fate when attempting to climb over a stile on the footpath. Again imagine the scene. Breathing heavily the miller slipped, falling one side of the stile, the pig the other and the wooden gamble pulled tightly back against the miller's windpipe and thus he died a miserable death.

We do not know his name or who found him. Neither do we know the origin of the name of Three Towns Farm - any ideas?

**Hughie Boorman**



## CHURCH SERVICES AT CHRISTMAS

### St. Peters Church

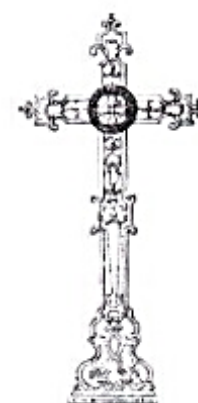
Saturday 14th December	7.30 pm	'Carols by Candlelight' at the Old Church
Sunday 15th December	3.30 pm	Christingle Service in the Upper Church
Sunday 22nd December	6.30 pm	Carol Service in the Upper Church
	3.00 pm	Crib Building Service in the Upper Church (children and families especially welcome)
	11.30 pm	Midnight Mass in the Upper Church
Christmas Day	8.00 am	Holy Communion in the Upper Church
	9.45 am	Parish Eucharist in the Upper Church
	11.30 am	Holy Communion with Carols in the Old Church

### St. Anselm

Saturday 21st December	7.30 pm	Carol Service
Christmas Eve	8.00 pm	Vigil Mass (Carols from 7.30 pm)
Christmas Day	10.30 am	Mass
Saturday 28th December	10.00 am	Mass
Sunday 29th December	10.30 am	Mass

### Pembury Free Church

Friday 13th December	2.30 pm	Toddlers Service (Mums, Dads, Guardians and Toddlers)
Sunday 22nd December	10.00 am	All Age Christmas Celebration
	6.30 pm &	
	8.15 pm	Carols by Candlelight
Christmas Eve	11.15 pm	Christmas Eve Communion
Christmas Day	10.00 am	Christmas Service



## Your Clerk Reports . . .

This time of the year sees the Parish Council drawing up its budget for the year 1997/1998. The various committees will put their bids forward for projects they would like to see carried out in the forthcoming year. As parishioners you may wonder exactly where your money goes.

Each year every household in England receives a Council Tax bill. In the Pembury area it is divided into three sections: Kent County Council, Tunbridge Wells Borough Council and Pembury Parish Council. Thus all the money spent by Pembury Parish Council is raised directly from the parishioners in Pembury. The Parish Council tries to provide what Pembury parishioners want but it is up to you to make your wants known.

Anticipating such a need for an improvement in community facilities, the Parish Council would like to upgrade and refurbish our existing Village Hall and to this end has decided that this aim will be the Parish Council's Millennium Project, more details of which can be found in the centre pages of this magazine.

Although a substantial amount of the Parish Council's energy and money will be directed towards this Millennium Project, it will also be actively dealing with the everyday management of the parish and its responsibilities therein. A new Senior Groundsman will be appointed in the New Year to take over from Mr Roy Andrews, who will be retiring at the end of March 1997. Roy has been tireless in his efforts to keep the village looking tidy and smart and I would like to take this opportunity to thank Roy publicly for all he has done in the village. It has been a pleasure working with him.

But not everything worthwhile costs money. Many problems can be solved by simply telephoning the Clerk's Office and talking to me or leaving a message on the Answerphone which helps to keep the Office in touch and available 365 days a year. Your message will be acknowledged and dealt with as soon as possible but if you do not tell us of the problem we cannot solve it.

You pay for the Clerk's Office. Please use it.

Barbara Russell

## Worldwide Travel

Pembury's Travel Agency

"Exclusively long haul travel" (outside Europe)

Some High Street travel agents recommend large tour operators -  
because they are part of the same group of companies -  
which is not always in the **customers** best interest!

Visiting a travel agency in the town centre may also be **inconvenient for you**

We can visit you in your home at a time that **does suit you.**

For a truly unbiased opinion from a travel agency able to book **any** tour operator  
with personal experience of most long haul holiday destinations -  
call Worldwide Travel today.

Flights - Cruises - Hotels - Villas - Car Hire - Motorhomes - Coach Tours  
Tailor made arrangements - Competitive Worldwide Travel Insurance  
(Business Travel services available)

Tel: 01892 822999 member of Travel Trust Association  
(Agents for A.T.O.L. holders)

## ACCIDENT REPAIRS

- ★ VEHICLE REPAIRS
- ★ BODY/CHASSIS ALIGN
- ★ LOW BAKE OVEN

- ★ QUALITY FINISH
- ★ COLLECTION/DELIVERY
- ★ INSURANCE APPROVED



Appointed members:  
Guild of  
Master  
Craftsmen  
Established  
1958



## E. G. GREEN & SON

2 PETERSFIELD · PEMBURY

**PEMBURY 822992**

Highly Commended by the National Association of Estate Agents

**DENISE BARNES**  
ESTATE AGENTS RESIDENTIAL LETTINGS



16 High Street, Pembury Tel: 01892 822880  
The Heath, Horsmonden Tel: 01892 724000

and PRESTIGE AND COUNTRY HOMES at  
Market Heath, Brenchley Tel: 01892 723922

Your **INDEPENDENT** Estate Agency for Personal, Experienced and Friendly service.  
**FREE VALUATIONS - COMPETITIVE RATES - GOOD LOCAL KNOWLEDGE**

## S & B AUTOS

ACCIDENT REPAIR SPECIALISTS



CAMDEN SERVICE STATION · PEMBURY  
24-Hour Recovery Service



RE-SPRAYING CHASSIS JIG ALIGNMENT  
LOW BAKE OVEN FOR FACTORY FINISH

**Come to the people who care**  
**Friendly advice - Courteous Service**  
**Fully Experienced Engineers**

## P. J. & J. M. Ditchett

CHEMIST

Medicines	Cosmetics
Baby Products	Fancy Goods
Kodak Films	Gift Sets
Developing & Printing	Toiletries

5 HIGH STREET, Pembury ☎ 822896

## FOR YOUR DIARY

### JANUARY

- 2 Pembury Afternoon WI: Romanian Aid - Village Hall - 2.15pm
- 3 Pembury Evening WI: Women and the Law - Village Hall - 7.45pm
- 4 Pembury Footpath Walkers - Stonecourt Lane - 2.15pm
- 6 Parish Council Meeting - Village Hall - 8pm
- 7 Darby and Joan Club - Village Hall - 2pm
- 8-11 Pembury Players: Aladdin - Village Hall.
- 13 St. Peter's Photographic Club - Upper Church Room - 8pm
- 21 Darby and Joan Club - Village Hall - 2pm
- 24 Pembury Horticultural Society: Wines from the Garden - Village Hall - 8pm
- 27 St. Peter's Photographic Club - Upper Church Room - 8pm
- 27 Parish Council Meeting - Village Hall - 8pm

### FEBRUARY

- 1 Pembury Footpath Walkers - Camden Car Park - 2.15pm
- 4 Darby and Joan Club - Village Hall - 2pm
- 6 Pembury Afternoon WI: From Sheep to Jumper - Village Hall - 2.15pm
- 7 Pembury Evening WI: Fabergé Egg Shells - Village Hall - 7.45pm
- 10 St. Peter's Photographic Club - Upper Church Room - 8pm
- 15 Pembury Evening WI: Jumble Sale - Village Hall
- 17 Parish Council Meeting - Village Hall - 8pm
- 18 Darby and Joan Club - Village Hall - 2pm
- 20 Pembury Horticultural Society: AGM - Village Hall - 8pm
- 24 St. Peter's Photographic Club - Upper Church Room - 8pm

### MARCH

- 1 Pembury Footpath Walkers - Stonecourt Lane - 2.15pm
- 4 Darby and Joan Club - Village Hall - 2pm
- 6 Pembury Afternoon WI: Hospice at Home - Village Hall - 2.15pm
- 7 Pembury Evening WI: Drug Awareness - Village Hall - 7.45pm
- 10 St. Peter's Photographic Club - Upper Church Room - 8pm
- 10 Parish Council Meeting - Village Hall - 8pm
- 17 Annual Parish Meeting - Village Hall - 8pm
- 18 Darby and Joan Club - Village Hall - 2pm
- 24 St. Peter's Photographic Club - Upper Church Room - 8pm
- 27 Pembury Horticultural Society: Annual Fun Quiz - Village Hall - 8pm

